

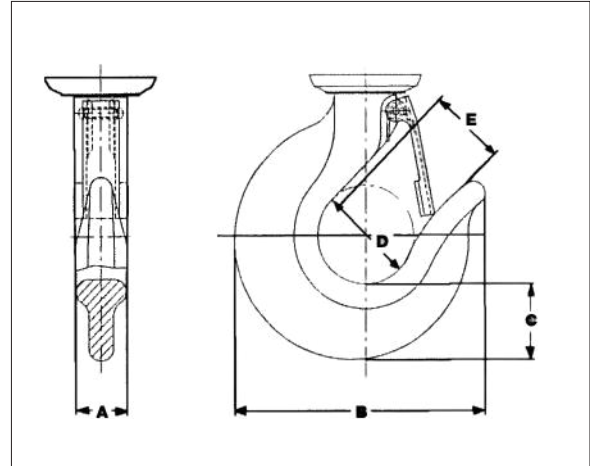
## HOOK DIMENSIONS

### HAND CHAIN HOISTS

| Capacity (Tonnes) | Dimensions (mm) |     |     |     |    |
|-------------------|-----------------|-----|-----|-----|----|
|                   | A               | B   | C   | D   | E  |
| 0.454             | 16              | 73  | 20  | 36  | 27 |
| 0.907             | 20              | 86  | 24  | 40  | 28 |
| 1.814             | 24              | 113 | 30  | 50  | 35 |
| 2.722             | 28              | 133 | 42  | 54  | 41 |
| 4.536             | 36              | 152 | 46  | 61  | 44 |
| 6.804             | 42              | 185 | 66  | 71  | 43 |
| 9.072             | 62              | 236 | 90  | 80  | 52 |
| 13.608            | 65              | 270 | 90  | 110 | 60 |
| 18.144            | 79              | 323 | 118 | 120 | 85 |

### LEVER HOISTS

| Capacity (Tonnes) | Dimensions (mm) |     |    |    |    |
|-------------------|-----------------|-----|----|----|----|
|                   | A               | B   | C  | D  | E  |
| 0.680             | 15              | 74  | 19 | 36 | 23 |
| 1.361             | 22              | 103 | 28 | 43 | 28 |
| 1.814             | 24              | 113 | 31 | 47 | 28 |
| 2.722             | 32              | 126 | 35 | 53 | 34 |
| 5.443             | 37              | 152 | 45 | 62 | 46 |
| 8.165             | 54              | 236 | 84 | 90 | 56 |



## OPTIONS FOR HAND CHAIN HOISTS

Bronze wheels, nickel plated trolley and hoist body, nickel plated hand and load chain, bronze coated hook and load block.

Bronze wheels, bronze load hook and stainless steel load chain.

Stainless steel load chain, bottom block and hook.

Chain container.



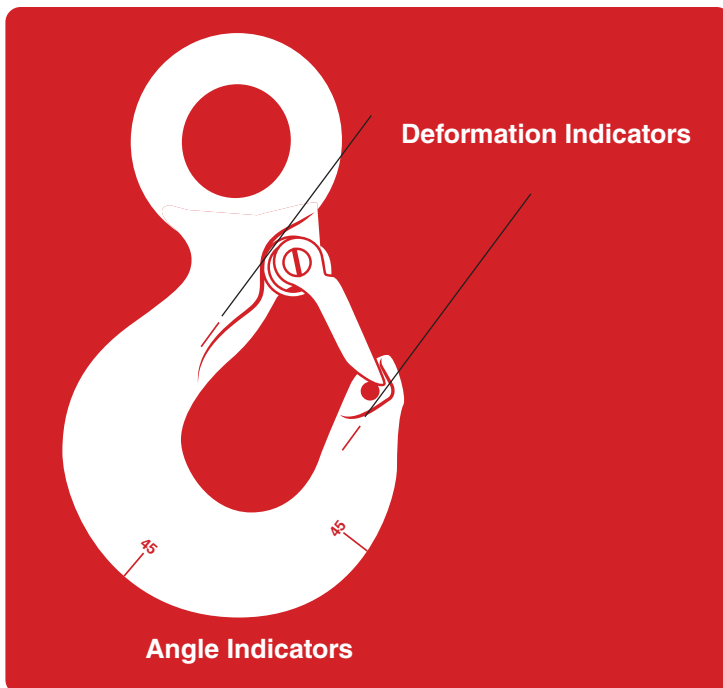
# HOOKS & SWIVELS

Setting the standard for hooks with industry-changing innovations. With the most extensive product range in the industry, there's a hook for every lift.



### CROSBY VALUE ADDED

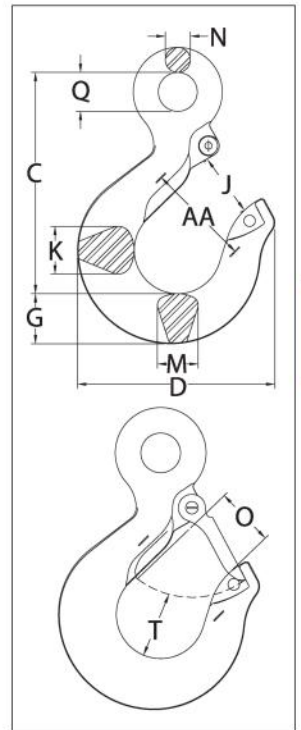
- **Application information:** Application and warning information is available for Crosby hooks. The Crosby Warning System is designed to attract the attention of the user, clearly inform the user of the factors involved in the task, and provide the user with proper application procedures. Each Crosby hook is tagged with appropriate application and warning information, thus ensuring that the information is available at the point of application.
- **Charpy impact properties:** Crosby's Quenched & Tempered® hooks have enhanced impact properties for greater toughness at all temperatures. Crosby can provide typical Charpy impact properties on selected sizes upon special request at the time of order.
- **Fatigue properties:** Typical fatigue properties are available for selected sizes. In addition, these properties will be provided upon special request for other sizes.
- **Ductility properties:** Crosby provides results of actual test values for ductility of the material. These results are measured by reduction of area and elongation. This is done for each production lot and is traceable by the Product Identification Code (PIC).
- **Tensile strengths:** Crosby provides hardness, tensile, and yield strength for each production lot of hooks, traceable by the PIC.
- **Material analysis:** Crosby can provide certified material (mill) analysis for each production lot, traceable by the PIC. Crosby, through its own laboratory, verifies the analysis of each heat of steel. Crosby purchases only special bar forging quality steel with specific cleanliness requirements and guaranteed hardenability.
- **Field inspection:** Written instructions for visual, magnaflux, and dye penetrant inspection of hooks are available from Crosby. In addition, acceptance criteria and repair procedures for hooks are available.
- **Proof testing:** If requested at the time of order, hooks can be furnished proof tested with certification. All SHUR-LOC® hooks (clevis and eye styles) are 100% proof tested with certificates.
- **Magnetic particle certification:** If requested at the time of order, hooks can be magnetic particle inspected with certification.
- **World-class certification:** Certification to world standards can be furnished upon request at the time of order. Specific standards include American Bureau of Shipping, Lloyds Register of Shipping, Det Norske Veritas, American Petroleum Institute, RINA, Nuclear Regulatory Commission, and other worldwide standards.
- **Bronze hooks:** Crosby provides bronze shank hooks for non-sparking applications.
- **QUIC-CHECK®:** Hooks incorporate markings forged into the product which address two QUIC-CHECK features:  
 Deformation Indicators: Two strategically placed marks, one just below the shank or eye and the other on the hook tip, which allows for a QUIC-CHECK measurement to determine if the throat opening has changed, thus indicating abuse or overload.  
 Angle Indicators: Indicates the maximum included angle which is allowed between two sling legs in the hook. These indicators also provide the opportunity to approximate other included angles between two sling legs.
- **McKissick® Split-Nut® Hook Retention System:** Shank hooks on crane blocks must be inspected in accordance with applicable ASME B30, CSA Z150, and other crane standards. These standards mandate the crane hook to be inspected for surface indications, damage and corrosion which could compromise the integrity of the crane block. Because of the type of environment in which these hooks are required to perform, the removal of corroded nuts from the threads can become a problem during inspections. The innovative, patented system is available on Crosby shank hooks. With four easy steps, the hook can be disassembled, inspected and put back into service in a fraction of the time of a conventional threaded nut.



## L-1327



- For use with wire rope. Suitable for use with Grade 100 and Grade 80 chain. Working load limit needs to be de-rated to achieve a 5:1 design factor.
- Forged alloy steel, Quenched & Tempered.
- Each hook has a Product Identification Code (PIC) for material traceability, along with the size and the name Crosby.
- 25% stronger than Grade 80.
- Eye Sling Hooks incorporate QUIC-CHECK® deformation and angle indicators. (For detailed information, see the Crosby Value Added page at the beginning of this section.)
- When secured with the proper cotter pin through the hole in the tip of hook, meets the intent of OSHA Rule 1926.1431(g) and 1926.1501(g) for personnel lifting.
- Individually Proof Tested to 2.5 times the Working Load Limit with certification.
- Fatigue rated to 20,000 cycles at 1.5 times the Working Load Limit.



4



APPLICATION AND WARNING INFORMATION  
SECTION 17

## L-1327 Eye Sling Hook

| Grade 10 Alloy Chain Size |       | Working Load Limit (t) | Hook ID Code | Stock No. | Weight Each (kg) | Dimensions (mm) |      |      |      |      |      |      |      |      |      |      | Replacement Latch Stock No. |
|---------------------------|-------|------------------------|--------------|-----------|------------------|-----------------|------|------|------|------|------|------|------|------|------|------|-----------------------------|
| (in)                      | (mm)  |                        |              |           |                  | C               | D    | G    | J    | K    | M    | N    | O    | Q    | T    | AA   |                             |
| -                         | 6     | 1.45                   | DA           | 1025860   | .23              | 84.8            | 72.9 | 18.5 | 22.9 | 16.0 | 16.0 | 9.1  | 22.6 | 19.1 | 22.1 | 38.1 | 1096325                     |
| 1/4-5/16                  | 7 - 8 | 2.6                    | HA           | 1025869   | .59              | 107             | 99.1 | 26.2 | 30.0 | 19.1 | 19.1 | 12.7 | 29.2 | 19.1 | 29.5 | 50.8 | 1096468                     |
| 3/8                       | 10    | 4.0                    | IA           | 1025878   | 1.04             | 127             | 110  | 30.2 | 38.9 | 30.2 | 25.4 | 14.2 | 35.6 | 23.9 | 31.2 | 63.5 | 1096515                     |
| 1/2                       | 13    | 6.8                    | JA           | 1025887   | 2.04             | 161             | 144  | 36.6 | 45.2 | 34.8 | 29.7 | 18.3 | 42.4 | 28.4 | 47.8 | 76.2 | 1096562                     |
| 5/8                       | 16    | 10.3                   | KA           | 1025896   | 3.81             | 189             | 172  | 47.8 | 60.5 | 42.2 | 36.6 | 22.4 | 56.1 | 33.3 | 51.6 | 102  | 1096609                     |
| 3/4                       | 18-20 | 16.0                   | KA           | 1025915   | 6.80             | 230             | 189  | 57.2 | 58.2 | 47.8 | 41.4 | 28.2 | 52.8 | 62.0 | 62.7 | 102  | 1096609                     |
| 7/8                       | 22-23 | 20.0                   | LA           | 1025924   | 9.39             | 256             | 211  | 65.8 | 63.5 | 55.6 | 49.3 | 32.3 | 57.7 | 72.1 | 66.5 | 102  | 1096657                     |
| 1                         | 26    | 27.1                   | NA           | 1025933   | 17.9             | 326             | 262  | 76.2 | 83.8 | 68.3 | 60.5 | 39.6 | 76.7 | 88.9 | 71.9 | 127  | 1096704                     |
| 1 1/4                     | 32    | 41.0                   | PA           | 1025942   | 47.6             | 462             | 357  | 116  | 108  | 95.3 | 81.0 | 50.8 | 76.2 | 114  | 98.6 | 178  | 1093717                     |

4:1 Design Factor. \*Deformation indicators.

Hook Ductility: Compare an 'as forged' hook to the superior quality of a Crosby® Quenched & Tempered® hook. Watch video at [thecrosbygroup.com/QT](https://www.thecrosbygroup.com/QT)

**S-319/S-319N**



- The most complete line of shank marked hooks. Available 3/4 to 300 metric tons.
- Hook Identification code marked into each hook.
- All carbon and alloy hooks are quenched and tempered.
- Quenched & Tempered.
- Available in carbon steel, alloy steel, and bronze.
- Proper design, careful forging, and precision controlled quench and tempering give maximum strength without excessive weight and bulk.
- Every Crosby Shank Hook has a pre-drilled cam which can be equipped with a latch. Simply purchase the Crosby latch assemblies. Even years after the purchase of the original hook, latch assemblies can be added.
- Type Approval Certification in accordance with ABS 2016 Steel Vessels and ABS Guide for Certification on Cranes available. Certificates available when requested at time of order and may include additional charges.



APPLICATION AND WARNING INFORMATION  
SECTION 17

**S-319 / S-319N Shank Hook**

| Working Load Limit (t) |       |        | Hook ID Code | Shank Hooks Stock No. |                      |                | Shank Length ‡ | Weight Each (kg) | Rep. Latch Kits  |              |                   |
|------------------------|-------|--------|--------------|-----------------------|----------------------|----------------|----------------|------------------|------------------|--------------|-------------------|
| Carbon                 | Alloy | Bronze |              | Carbon S-319C S-319CN | Alloy S-319A S-319AN | Bronze S-319BN |                |                  | S-4320 Stock No. | PL Stock No. | SS-4055 Stock No. |
| 0.75                   | 1     | .5     | †D           | 1028505               | 1028701              | 1028900        | Std.           | .23              | 1096325          | -            | -                 |
| 1                      | 1.5   | .6     | †F           | 1028514               | 1028710              | 1028909        | Std.           | .34              | 1096374          | -            | -                 |
| 1.5                    | 2     | 1      | †G           | 1028523               | 1028723              | 1028918        | Std.           | .45              | 1096421          | -            | -                 |
| 2                      | 3     | 1.4    | †H           | 1028532               | 1028732              | 1028927        | Std.           | .83              | 1096468          | -            | -                 |
| 3                      | 5     | 2      | †I           | 1028541               | 1028741              | 1028936        | Std.           | 1.67             | 1096515          | 1092000      | -                 |
| 5                      | 7     | 3.5    | †J           | 1028550               | 1028750              | 1028945        | Std.           | 3.29             | 1096562          | 1092001      | -                 |
| 7.5                    | 11    | 5      | †K           | 1028563               | 1028765              | 1028954        | Std.           | 6.12             | 1096609          | 1092002      | -                 |
| 10                     | 15    | 6.5    | †L           | 1028590               | 1028792              | 1028981        | Std.           | 9.9              | 1096657          | 1092003      | -                 |
| 15                     | 22    | 10     | †N           | 1028599               | 1028801              | 1028990        | Std.           | 17.4             | 1096704          | 1092004      | -                 |
| 20                     | 30    | -      | O            | 1024386               | 1024803              | -              | Std.           | 32.7             | -                | 1093716      | 1090161           |
| 20                     | 30    | -      | O            | 1024402               | 1024821              | -              | Long           | 38.8             | -                | 1093716      | 1090161           |
| 25                     | 37    | -      | P            | 1024420               | 1024849              | -              | Std.           | 61               | -                | 1093717      | 1090189           |
| 25                     | 37    | -      | P            | 1024448               | 1024867              | -              | Long           | 78               | -                | 1093717      | 1090189           |
| 30                     | 45    | -      | S            | 1024466               | 1024885              | -              | Std.           | 83               | -                | 1093718      | 1090189           |
| 30                     | 45    | -      | S            | 1024484               | 1024901              | -              | Long           | 97               | -                | 1093718      | 1090189           |
| 40                     | 60    | -      | T            | 1024509               | 1024929              | -              | Std.           | 122              | -                | 1093719      | 1090205           |
| 40                     | 60    | -      | T            | 1024545               | 1024965              | -              | Long           | 142              | -                | 1093719      | 1090205           |
| 50                     | 75    | -      | U            | 1024563               | 1024983              | -              | Std.           | 177              | -                | 1093720      | -                 |
| 50                     | 75    | -      | U            | 1024581               | 1025009              | -              | Long           | 193              | -                | 1093720      | -                 |
| -                      | 100   | -      | W            | -                     | 1025027              | -              | Std.           | 277              | -                | 1093721      | -                 |
| -                      | 100   | -      | W            | -                     | 1025045              | -              | Long           | 306              | -                | 1093721      | -                 |
| -                      | 150   | -      | X            | -                     | 1025063              | -              | Std.           | 333              | -                | 1093721      | -                 |
| -                      | 200   | -      | Y            | -                     | 1025081              | -              | Std.           | 463              | -                | 1093723      | -                 |
| -                      | 300   | -      | Z            | -                     | 1025090              | -              | Std.           | 630              | -                | 1093724      | -                 |

Maximum allowable Proof Load is 2 Times Working Load Limit. All carbon hooks designed with a 5:1 design factor. All alloy hooks 1 through 22t designed with a 4.5:1 design factor. All alloy hooks 30t and larger designed with a 4:1 design factor. All bronze hooks designed with a 4:1 design factor. †New 319N style hook. ‡See column "Y" on following page for actual length.



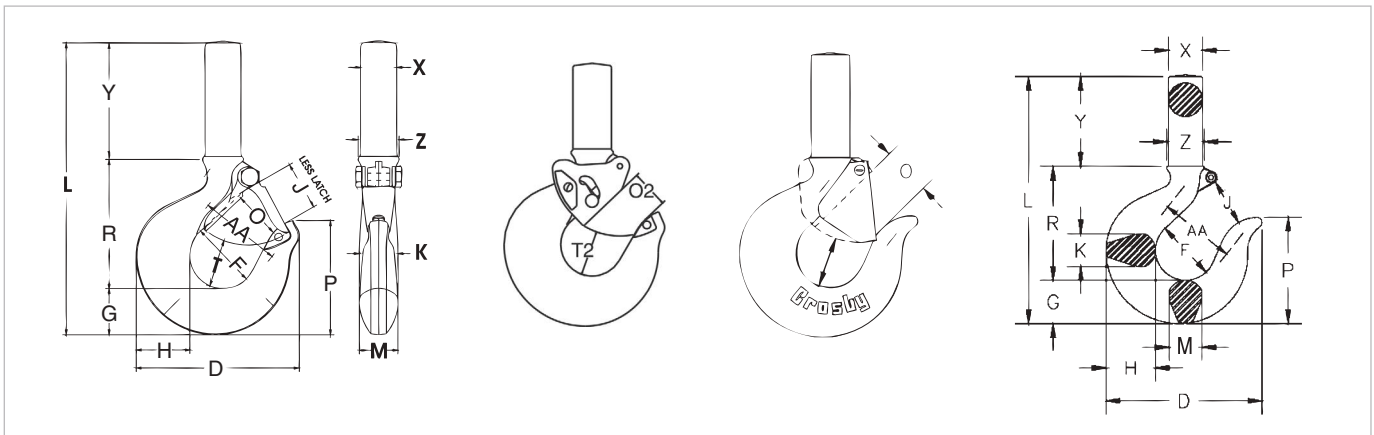
## S-319/S-319N



- Patented McKissick Split-Nut retention system available.
- Hooks incorporate QUIC-CHECK® deformation and angle indicators. (For detailed information, see the Crosby Value Added page at the beginning of this section.)
- Chemical analysis and tensile tests performed on each PIC to verify chemistry and mechanical properties.



APPLICATION AND WARNING INFORMATION  
SECTION 17



### S-319 / S-319N Shank Hook

| Hook ID Code | Dimensions (mm) |      |      |      |      |      |      |      |       |       |      |      |      |       |      |      |      |      |
|--------------|-----------------|------|------|------|------|------|------|------|-------|-------|------|------|------|-------|------|------|------|------|
|              | D               | F    | G    | H    | J    | K    | L    | M    | O     | O2 †† | P    | R    | T    | T2 †† | X    | Y    | Z    | AA*  |
| †D           | 72.5            | 31.8 | 18.5 | 20.6 | 23.6 | 16.0 | 131  | 16.0 | †23.6 | -     | 49.8 | 59.5 | 24.6 | -     | 15.0 | 52.5 | 17.5 | 38.1 |
| †F           | 80.5            | 35.1 | 21.3 | 23.9 | 24.6 | 18.0 | 144  | 18.0 | †24.6 | -     | 56.5 | 66.0 | 24.6 | -     | 19.3 | 57.0 | 19.8 | 50.8 |
| †G           | 91.0            | 38.1 | 25.4 | 29.5 | 26.9 | 22.4 | 161  | 22.4 | †26.9 | -     | 62.0 | 70.0 | 26.2 | -     | 18.3 | 66.0 | 22.4 | 50.8 |
| †H           | 102             | 41.1 | 29.0 | 33.3 | 30.2 | 23.9 | 181  | 23.9 | †29.5 | -     | 70.5 | 80.5 | 29.5 | -     | 22.4 | 72.0 | 25.4 | 50.8 |
| †I           | 123             | 51.0 | 36.6 | 41.4 | 38.1 | 33.3 | 219  | 28.7 | †34.5 | 25.4  | 88.0 | 98.0 | 38.9 | 38.1  | 29.5 | 87.5 | 31.8 | 63.5 |
| †J           | 160             | 63.5 | 46.2 | 52.5 | 45.2 | 42.2 | 265  | 36.6 | 40.9  | 33.3  | 117  | 121  | 49.3 | 47.8  | 35.8 | 97.5 | 39.6 | 76.2 |
| †K           | 192             | 76.0 | 57.5 | 67.0 | 61.0 | 47.8 | 318  | 41.4 | 53.0  | 46.0  | 133  | 149  | 62.5 | 57.2  | 46.0 | 111  | 49.3 | 101  |
| †L           | 212             | 82.5 | 66.0 | 74.5 | 66.5 | 55.5 | 409  | 49.3 | 57.5  | 51.0  | 151  | 162  | 66.0 | 58.7  | 51.0 | 178  | 55.5 | 101  |
| †N           | 263             | 108  | 76.5 | 89.0 | 86.5 | 68.5 | 461  | 60.5 | 76.5  | 69.9  | 175  | 207  | 71.5 | 65.0  | 65.0 | 178  | 67.0 | 127  |
| O            | 346             | 127  | 92.0 | 117  | 102  | 76.0 | 586  | 76.0 | 82.5  | -     | 223  | 240  | 87.5 | -     | 79.0 | 254  | 79.0 | 165  |
| O            | 346             | 127  | 92.0 | 117  | 102  | 76.0 | 790  | 76.0 | 82.5  | -     | 223  | 240  | 87.5 | -     | 79.0 | 457  | 79.0 | 165  |
| P            | 357             | 137  | 116  | 127  | 108  | 92.0 | 816  | 76.0 | 76.0  | -     | 287  | 318  | 98.5 | -     | 102  | 381  | 102  | 177  |
| P            | 357             | 137  | 116  | 127  | 108  | 92.0 | 1044 | 76.0 | 76.0  | -     | 287  | 318  | 98.5 | -     | 102  | 610  | 102  | 177  |
| S            | 392             | 152  | 129  | 140  | 121  | 94.5 | 867  | 82.5 | 86.0  | -     | 319  | 356  | 121  | -     | 106  | 381  | 106  | 203  |
| S            | 392             | 152  | 129  | 140  | 121  | 94.5 | 1095 | 82.5 | 86.0  | -     | 319  | 356  | 121  | -     | 106  | 610  | 106  | 203  |
| T            | 470             | 178  | 152  | 165  | 146  | 113  | 916  | 99.5 | 105   | -     | 375  | 395  | 145  | -     | 114  | 368  | 114  | 254  |
| T            | 470             | 178  | 152  | 165  | 146  | 113  | 1208 | 99.5 | 105   | -     | 375  | 395  | 145  | -     | 114  | 660  | 114  | 254  |
| U            | 524             | 197  | 170  | 184  | 165  | 133  | 1045 | 108  | 124   | -     | 420  | 492  | 152  | -     | 127  | 381  | 127  | 292  |
| U            | 524             | 197  | 170  | 184  | 165  | 133  | 1249 | 108  | 124   | -     | 420  | 492  | 152  | -     | 127  | 584  | 127  | 292  |
| W            | 584             | 173  | 218  | 251  | 149  | 140  | 1070 | 140  | 114   | -     | 438  | 468  | 178  | -     | 178  | 381  | 178  | 305  |
| W            | 584             | 173  | 218  | 251  | 149  | 140  | 1222 | 140  | 114   | -     | 438  | 468  | 178  | -     | 178  | 533  | 178  | 305  |
| X            | 619             | 171  | 232  | 278  | 152  | 152  | 1162 | 152  | 114   | -     | 457  | 467  | 178  | -     | 184  | 457  | 184  | 330  |
| Y            | 678             | 191  | 248  | 300  | 168  | 178  | 1283 | 178  | 127   | -     | 502  | 521  | 203  | -     | 203  | 508  | 203  | 330  |
| Z            | 765             | 241  | 270  | 329  | 203  | 184  | 1389 | 203  | 159   | -     | 576  | 597  | 210  | -     | 241  | 508  | 241  | 381  |

Rough as-forged dimension. Shank will not machine to this dimension. Please refer to the warnings & applications section for recommended shank diameter when machining.  
 \*Deformation indicators. †3/4t carbon through 22t alloy dimensions shown are for S-4320 Latch Kits. Dimensions for "O" frame size and larger are for PL Latch Kits. ††Dimensions are for PL-N latch kits. For the purpose of calculating D/d ratio, utilize dimension M.

**L-320CN**  
Frame Size D-N



- Available in carbon steel and alloy steel.
- Eye hooks are load rated (marked with the Working Load Limit).
- Fatigue rated to 20,000 cycles at 1.5 times the Working Load Limit.
- Chemical analysis and tensile tests performed on each PIC to verify chemistry and mechanical properties.
- Hooks incorporate QUIC-CHECK® deformation and angle indicators. (For detailed information, see the Crosby Value Added page at the beginning of this section.)

**L-320C**  
Frame Size O-T



## L-320N / L-320 Eye Hooks

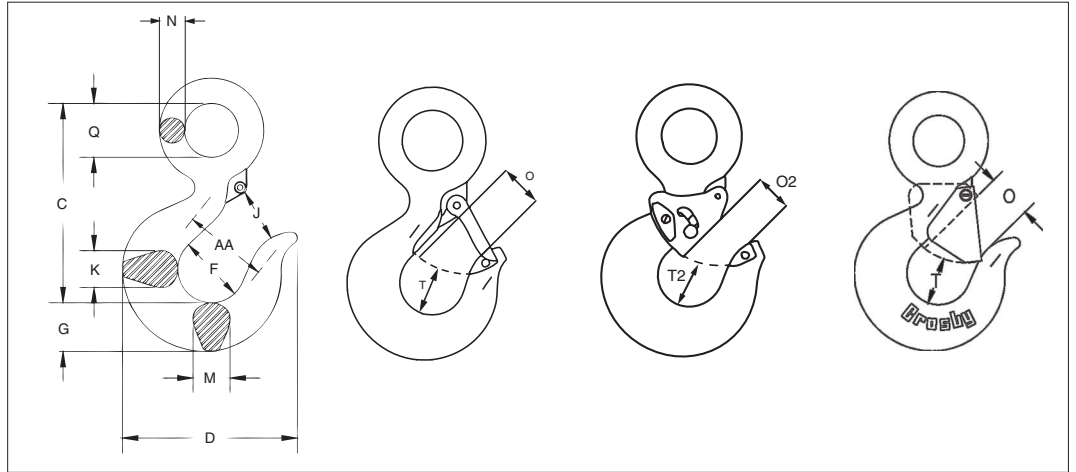
| Working Load Limit (t) |       | Hook ID Code | Eye Hook Stock No.         |                       |                           | Weight Each (kg) | Replacement Latch Kits |              |                   |
|------------------------|-------|--------------|----------------------------|-----------------------|---------------------------|------------------|------------------------|--------------|-------------------|
| Carbon                 | Alloy |              | Carbon L-320C L-320CN S.C. | Carbon GL-320CN Galv. | Alloy L-320A L-320AN S.C. |                  | S-4320 Stock No.       | PL Stock No. | SS-4055 Stock No. |
| 0.75                   | 1     | †D           | 1022205                    | 1022208               | 1022380                   | .28              | 1096325                | -            | -                 |
| 1                      | 1.5   | †F           | 1022216                    | 1022219               | 1022391                   | .40              | 1096374                | -            | -                 |
| 1.5                    | 2     | †G           | 1022227                    | 1022230               | 1022402                   | .65              | 1096421                | -            | -                 |
| 2                      | 3     | †H           | 1022238                    | 1022241               | 1022413                   | .94              | 1096468                | -            | -                 |
| 3                      | 5     | †I           | 1022246                    | 1022249               | 1022424                   | 1.95             | 1096515                | 1092000      | -                 |
| 5                      | 7     | †J           | 1022260                    | 1022262               | 1022435                   | 3.76             | 1096562                | 1092001      | -                 |
| 7.5                    | 11    | †K           | 1022271                    | 1022274               | 1022446                   | 6.80             | 1096609                | 1092002      | -                 |
| 10                     | 15    | †L           | 1022282                    | 1022285               | 1022457                   | 9.42             | 1096657                | 1092003      | -                 |
| 15                     | 22    | †N           | 1022293                    | 1022296               | 1022468                   | 17.9             | 1096704                | 1092004      | -                 |
| 20                     | 30    | O            | 1022302                    | -                     | 1022477                   | 27.2             | -                      | 1093716      | 1090161           |
| 25                     | 37    | P            | 1023306                    | -                     | 1023565                   | 47.6             | -                      | 1093717      | 1090189           |
| 30                     | 45    | S            | 1023324                    | -                     | 1023583                   | 67               | -                      | 1093718      | 1090189           |
| 40                     | 60    | T            | 1023342                    | -                     | 1023609                   | 103              | -                      | 1093719      | 1090205           |

All carbon hooks have a 5:1 Design Factor. Alloy eye hooks 1t through 22t have a 5:1 Design Factor. Alloy eye hooks 30t through 60t have a 4.5:1 Design Factor. For 3/4t carbon through 22t alloy eye hooks, Proof Load is 2.5 times Working Load Limit. For 20t carbon through 60t alloy eye hooks, Proof Load is 2 times Working Load Limit.

**L-320AN**  
Frame Size D-N



**L-320AN**  
Frame Size O-T



4

Load Rated

Fatigue Rated

TA

QUIC-CHECK

QT

APPLICATION AND WARNING INFORMATION  
SECTION 17

## L-320N / L-320 EYE HOOKS

| Hook ID Code* | Dimensions (mm) |      |      |      |      |      |      |      |      |       |      |      |       |      |
|---------------|-----------------|------|------|------|------|------|------|------|------|-------|------|------|-------|------|
|               | C               | D    | F    | G    | J    | K    | M    | N    | O †  | O2 †† | Q    | T †  | T2 †† | AA** |
| †D            | 85              | 72.0 | 31.8 | 18.5 | 22.9 | 16.0 | 16.0 | 9.14 | 22.6 | -     | 19.1 | 22.1 | -     | 38.1 |
| †F            | 97              | 79.0 | 35.1 | 21.3 | 23.6 | 18.0 | 18.0 | 10.7 | 23.1 | -     | 23.1 | 24.9 | -     | 50.8 |
| †G            | 105             | 89.5 | 38.1 | 25.4 | 25.4 | 22.4 | 22.4 | 14.0 | 25.4 | -     | 28.7 | 26.2 | -     | 50.8 |
| †H            | 119             | 101  | 41.4 | 28.7 | 28.7 | 23.9 | 23.8 | 14.7 | 27.7 | -     | 31.8 | 29.5 | -     | 50.8 |
| †I            | 147             | 122  | 51.0 | 36.6 | 37.3 | 33.3 | 33.3 | 18.3 | 34.5 | 25.4  | 39.6 | 38.9 | 38.1  | 63.5 |
| †J            | 187             | 159  | 63.5 | 46.0 | 44.5 | 42.2 | 42.2 | 22.9 | 40.9 | 33.3  | 51.0 | 49.8 | 47.7  | 76.2 |
| †K            | 230             | 189  | 76.0 | 57.0 | 58.0 | 47.8 | 41.4 | 28.2 | 53.0 | 46.0  | 62.0 | 62.5 | 57.2  | 102  |
| †L            | 256             | 211  | 82.5 | 66.0 | 63.5 | 55.5 | 49.3 | 32.3 | 57.5 | 51.0  | 72.0 | 66.5 | 58.7  | 102  |
| †N            | 318             | 262  | 108  | 76.0 | 84.0 | 68.5 | 60.5 | 39.6 | 76.5 | 69.8  | 89.0 | 72.0 | 65.0  | 127  |
| O             | 357             | 346  | 127  | 92.0 | 102  | 76.0 | 76.2 | 44.5 | 82.5 | -     | 89.0 | 87.5 | -     | 165  |
| P             | 462             | 357  | 137  | 116  | 108  | 95.2 | 81.0 | 51.0 | 76.0 | -     | 114  | 98.5 | -     | 178  |
| S             | 511             | 392  | 152  | 129  | 121  | 114  | 82.6 | 55.4 | 86.0 | -     | 125  | 121  | -     | 203  |
| T             | 602             | 470  | 178  | 152  | 146  | 140  | 99.3 | 64.3 | 105  | -     | 145  | 145  | -     | 254  |

\*Deformation indicators. †3/4t carbon though 22t alloy dimensions shown are for S-4320 Latch Kits. Dimensions for "O" frame size and larger are for PL Latch Kits.  
††Dimensions are for PL-N latch kits.

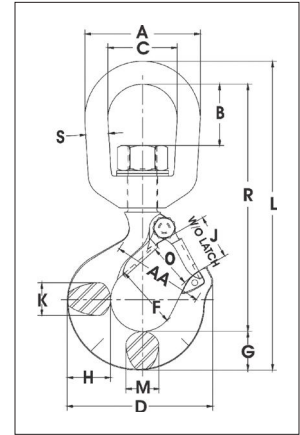


## L-322CN / L-322AN



- Forged, Quenched & Tempered.
- Suitable for positioning of the hook before the load is lifted.
- Swivel hooks are load rated.
- Proper design, careful forging, and precision controlled quench and tempering gives maximum strength without excessive weight and bulk.
- Low profile hook tip designed to utilize Crosby S-4320 or PL-N latch kit.
- Hooks incorporate QUIC-CHECK® deformation and angle indicators. (For detailed information, see the Crosby Value Added page at the beginning of this section.)

Use in corrosive environment requires shank and nut inspection in accordance with ASME B30.10-1.10.4(b)(5)(c).



APPLICATION AND WARNING INFORMATION  
SECTION 17

## L-322CN / L-322AN Swivel Hooks with Latch

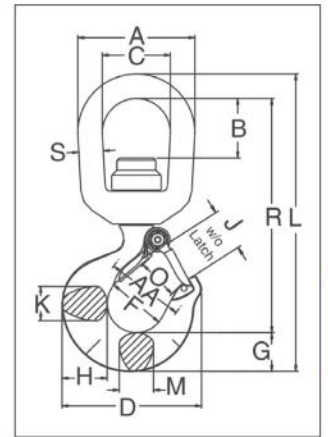
| Working Load Limit (t) |       | Hook ID Code* | L-322CN Stock No. | L-322AN Stock No. | Weight Each (kg) | Dimensions (mm) |      |      |      |      |      |      |      |      |     |      |      |     |      |      | Rep. Latch Stock No. |
|------------------------|-------|---------------|-------------------|-------------------|------------------|-----------------|------|------|------|------|------|------|------|------|-----|------|------|-----|------|------|----------------------|
| Carbon                 | Alloy |               |                   |                   |                  | A               | B    | C    | D    | F    | G    | H    | J    | K    | L   | M    | O †  | R   | S    | AA*  |                      |
| 0.75                   | 1     | D             | 1048603           | 1048807           | .34              | 51.0            | 20.8 | 31.8 | 72.5 | 31.8 | 18.5 | 20.6 | 23.6 | 16.0 | 144 | 16.0 | 23.6 | 116 | 9.65 | 38.1 | 1096325              |
| 1                      | 1.5   | F             | 1048612           | 1048816           | .57              | 63.5            | 33.3 | 38.1 | 80.0 | 35.1 | 21.3 | 23.9 | 24.6 | 18.0 | 170 | 18.0 | 24.6 | 136 | 12.7 | 50.8 | 1096374              |
| 1.5                    | 2     | G             | 1048621           | 1048825           | 1.02             | 76.0            | 38.1 | 44.5 | 91.0 | 38.1 | 25.4 | 29.5 | 26.9 | 22.4 | 197 | 22.4 | 26.9 | 155 | 16.0 | 50.8 | 1096421              |
| 2                      | 3     | H             | 1048630           | 1048834           | 1.04             | 76.0            | 38.1 | 44.5 | 102  | 41.1 | 28.7 | 33.3 | 30.2 | 23.9 | 210 | 23.9 | 29.5 | 165 | 16.0 | 50.8 | 1096468              |
| 3                      | 5     | I             | 1048639           | 1048840           | 2.25             | 89.0            | 41.7 | 50.8 | 123  | 51.0 | 36.6 | 41.4 | 38.1 | 33.3 | 246 | 28.7 | 35.8 | 191 | 19.1 | 63.5 | 1096515              |
| 5                      | 7     | J             | 1048648           | 1048859           | 4.67             | 116             | 58.0 | 63.5 | 160  | 63.5 | 46.0 | 52.5 | 45.2 | 42.2 | 317 | 36.6 | 42.9 | 245 | 25.4 | 76.2 | 1096562              |
| 7.5                    | 11    | K             | 1048657           | 1048868           | 8.80             | 127             | 62.0 | 70.0 | 192  | 76.0 | 57.0 | 67.0 | 51.0 | 47.8 | 375 | 41.4 | 56.5 | 289 | 28.7 | 101  | 1096609              |
| 10                     | 15    | L             | 1048666           | 1048880           | 10.5             | 143             | 63.0 | 79.0 | 212  | 82.5 | 66.0 | 74.5 | 66.5 | 55.5 | 417 | 49.3 | 61.0 | 311 | 31.8 | 101  | 1096657              |
| 15                     | 22    | N             | 1048675           | 1048889           | 21.3             | 180             | 95.5 | 104  | 263  | 108  | 76.0 | 89.0 | 86.5 | 68.5 | 542 | 60.5 | 81.0 | 424 | 38.1 | 127  | 1096704              |
| -                      | 30    | O             | -                 | 1048898           | 32.0             | 180             | 95.5 | 104  | 346  | 127  | 93.0 | 118  | 102  | 72.5 | 590 | 76.2 | 82.6 | 459 | 38.1 | 165  | 1090161              |

All carbon swivel hooks have a 5:1 Design Factor and Proof Load is 2 times the Working Load Limit. Alloy swivel hooks 1t through 22t have a 4.5:1 Design Factor and Proof Load is 2.5 times the Working Load Limit. Alloy swivel hooks of 30t capacity have a 4:1 Design Factor and Proof Load is 2 times the Working Load Limit. \*Deformation indicators †Dimensions for hooks 3/4t carbon through 22t alloy are for S-4320 latch kits. Dimensions for hooks 30t alloy are for 4055 latch kit.

## L-3322B



- Bearing design allows hook to rotate freely under load.
- Capacities ranging from 2 through 15 metric tons.
- Forged, Quenched & Tempered.
- Low profile hook tip designed to utilize Crosby S-4320 or PL-N latch kit.
- L-3322 hooks incorporate QUIC-CHECK® deformation and angle indicators. (For detailed information, see the Crosby Value Added page at the beginning of this section.)



4



APPLICATION AND WARNING INFORMATION  
SECTION 17

### L-3322B Swivel Hooks with Bearing

| Working Load Limit (t) | Hook ID Code* | Stock No. | Weight Each (kg) | Dimensions (mm) |      |      |      |      |      |      |      |      |     |      |      |     |      |      |         | Rep. Latch Stock No. |
|------------------------|---------------|-----------|------------------|-----------------|------|------|------|------|------|------|------|------|-----|------|------|-----|------|------|---------|----------------------|
|                        |               |           |                  | A               | B    | C    | D    | F    | G    | H    | J    | K    | L   | M    | O    | R   | S    | AA*  |         |                      |
| 2                      | GA            | 1028609   | 1.13             | 76.2            | 38.1 | 44.5 | 91.2 | 38.1 | 25.4 | 29.5 | 26.9 | 22.4 | 194 | 22.4 | 25.4 | 152 | 16.0 | 50.8 | 1096421 |                      |
| 3                      | HA            | 1028618   | 1.72             | 88.9            | 39.6 | 50.8 | 101  | 41.1 | 28.7 | 33.3 | 30.2 | 23.9 | 218 | 23.9 | 27.7 | 170 | 19.1 | 50.8 | 1096468 |                      |
| 5                      | IA            | 1028627   | 3.17             | 101             | 39.6 | 57.2 | 122  | 50.8 | 36.6 | 41.4 | 38.1 | 33.3 | 262 | 28.7 | 34.5 | 203 | 22.4 | 63.5 | 1096515 |                      |
| 7                      | JA            | 1028636   | 6.35             | 127             | 49.3 | 69.9 | 159  | 63.5 | 46.0 | 52.3 | 45.2 | 42.2 | 326 | 36.6 | 40.9 | 251 | 28.7 | 76.2 | 1096562 |                      |
| 11                     | KA            | 1028645   | 10.1             | 142             | 52.1 | 79.2 | 191  | 76.2 | 57.2 | 66.8 | 61.2 | 47.8 | 387 | 41.4 | 52.8 | 298 | 31.8 | 101  | 1096609 |                      |
| 15                     | LA            | 1028654   | 16.3             | 180             | 91.9 | 104  | 211  | 82.6 | 65.8 | 74.7 | 66.5 | 55.6 | 473 | 49.3 | 57.7 | 366 | 38.1 | 101  | 1096657 |                      |

4.5:1 Design Factor. Maximum allowable proof load is 2.5 times Working Load Limit. \*Deformation indicators.



Ep. 21 Grinding and wear allowance on rigging hardware



Ep. 31 Crosby Shurloc® Hook inspection requirements



Ep. 5 Hooks: Why the tips must point outward on multiple bridles

## VIDEO PODCAST SERIES

Our experts answer some of your most common safe rigging, lifting, and securement questions in our video podcast series, *Ask the Expert*.

Watch all episodes and submit your questions at [thecrosbygroup.com/podcast](http://thecrosbygroup.com/podcast), and subscribe to our YouTube channel to catch every new video as soon as it's released.

# Ask the Expert

VIDEO PODCAST

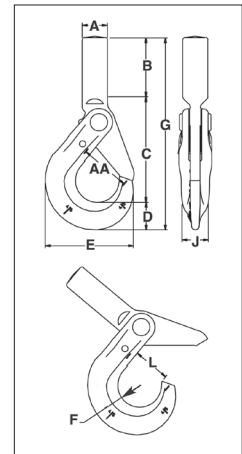
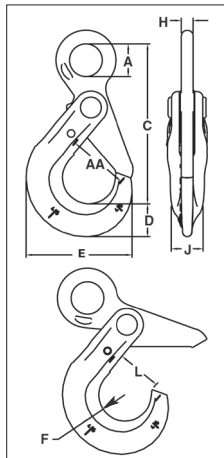
S-1316



S-1318A



- All SHUR-LOC® hooks have the following features:
  - Forged alloy steel, Quenched & Tempered.
  - Recessed trigger design is flush with the hook body, protecting the trigger from potential damage.
  - Easy to operate with enlarged thumb access.
  - Positive lock latch is self-locking when the hook is loaded.
  - The SHUR-LOC® hook, if properly installed and locked, can be used for personnel lifting applications and meets the intent of OSHA Rule 1926.1431(g)(1)(i)(A) and 1926.1501(g)(4)(iv)(B).
  - Fatigue rated to 20,000 cycles at 1-1/2 times the Working Load Limit.
  - Contact Engineered Solutions for additional threading or Split-Nut options at [thecrosbygroup.com/engineeredolutions](http://thecrosbygroup.com/engineeredolutions).
- Eye Style incorporates these added features:
  - Individually Proof Tested to 2-1/2 times the chain Working Load Limit with certification.
  - S-1316 meets the performance requirements of EN1677-3.
  - Suitable for use with Grade 100 and Grade 80 chain.
  - Designed with 'engineered flat' to connect to S-1325 chain coupler.



Crosby 8/10™ Fatigue Rated QT CE

APPLICATION AND WARNING INFORMATION SECTION 17

## S-1316 SHUR-LOC® Eye Hook with Positive Locking Latch

| Chain Size |       | Stock No. | Frame code | Grade 10 Alloy Chain Working Load Limit (t) 4:1 | Working Load Limit (t) 5:1 | Weight Each (kg) | Dimensions (mm) |     |      |      |      |      |      |      |      |  |
|------------|-------|-----------|------------|---|----------------------------|------------------|-----------------|-----|------|------|------|------|------|------|------|--|
| (in)       | (mm)  |           |            |   |                            |                  | A               | C   | D    | E    | F    | H    | J    | L    | AA*  |  |
| -          | 6     | 1022896   | D          | 1.45  | 1.00                       | .39              | 19.8            | 100 | 20.1 | 66.0 | 17.0 | 7.87 | 16.0 | 29.5 | 38.1 |  |
| 1/4-5/16   | 7-8   | 1022914   | G          | 2.60  | 1.90                       | .82              | 27.4            | 135 | 27.9 | 88.9 | 22.1 | 9.91 | 20.6 | 37.6 | 51.0 |  |
| 3/8        | 10    | 1022923   | H          | 4.00  | 2.50                       | 1.54             | 33.0            | 167 | 29.7 | 112  | 27.9 | 12.9 | 23.9 | 46.5 | 63.5 |  |
| 1/2        | 13    | 1022932   | I          | 6.80  | 5.62                       | 2.72             | 41.9            | 209 | 42.4 | 139  | 32.0 | 17.0 | 29.5 | 56.4 | 76.2 |  |
| 5/8        | 16    | 1022941   | J          | 10.30   | 7.53                       | 6.83             | 55.9            | 256 | 51.8 | 167  | 38.1 | 22.1 | 38.1 | 67.3 | 89.0 |  |
| 3/4        | 18-20 | 1022952   | -          | 16.00   | 9.98                       | 8.61             | 64.0            | 274 | 56.4 | 197  | 51.1 | 22.1 | 51.6 | 89.4 | -    |  |
| 7/8        | 22    | 1022943   | -          | 20.00   | 12.0                       | 12.7             | 72.9            | 317 | 62.2 | 222  | 57.7 | 24.9 | 55.9 | 97.3 | -    |  |
| 1          | 26    | 1022944   | -          | 27.10   | -                          | 22.45            | 80.0            | 371 | 81.5 | 251  | 62.5 | 32.0 | 68.1 | 104  | -    |  |

\*Deformation indicators.

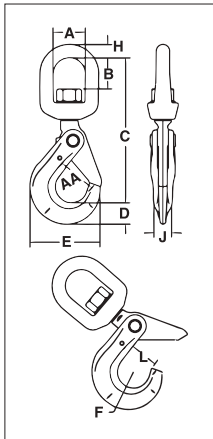
## S-1318A SHUR-LOC® Shank Hook

| Chain Size |      | Stock No. | Frame code | Grade 10 Alloy Chain Working Load Limit (t) | Dimensions (mm) |      |      |      |      |      |     |      |      |      | Weight Each (kg) |
|------------|------|-----------|------------|---|-----------------|------|------|------|------|------|-----|------|------|------|------------------|
| (in)       | (mm) |           |            |   | A†              | B    | C    | D    | E    | F    | G   | J    | L    | AA*  |                  |
| -          | 6    | 1098200   | D          | 1.45  | 20.1            | 55.0 | 84.0 | 20.1 | 66.0 | 17.0 | 159 | 16.0 | 28.7 | 38.1 | .45              |
| 1/4-5/16   | 7-8  | 1098209   | G          | 2.60  | 25.4            | 61.0 | 106  | 27.9 | 89.0 | 22.1 | 195 | 20.6 | 35.1 | 51.0 | .90              |
| 3/8        | 10   | 1098218   | H          | 4.00  | 29.0            | 75.0 | 131  | 29.7 | 112  | 27.9 | 235 | 23.9 | 46.5 | 63.5 | 1.61             |
| 1/2        | 13   | 1098227   | I          | 7   | 34.0            | 85.0 | 160  | 42.4 | 138  | 32.0 | 288 | 29.5 | 53.5 | 76.2 | 3.18             |

4:1 Design Factor based on Grade 100 chain. \*Deformation indicators. †Dimension before machining (as forged).

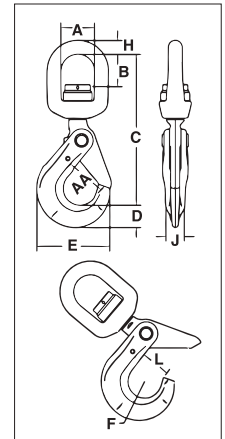


S-1326



- The S-1326 hook is a positioning device and is not intended to rotate under load. For swivel hook designed to rotate under load, use the S-13326.
- S-13326 Swivel Hook utilizes anti-friction bearing design which allows hook to rotate freely under load.
- Rated for both wire rope and for use with Grade 80/100 chain.
- Forged alloy steel, Quenched & Tempered.
- Individually Proof Tested at 2-1/2 times the chain Working Load Limit with certification.
- Recessed trigger design is flush with the hook body, protecting the trigger from potential damage.
- Easy to operate with enlarged thumb access.
- Positive lock latch is self-locking when hook is loaded.
- Trigger repair kit available (S-4316). Consists of spring, roll pin, and trigger.
- Fatigue rated to 20,000 cycles at 1-1/2 times the Working Load Limit.
- The SHUR-LOC® Hook, if properly installed and locked, can be used for personnel lifting applications and meets the intent of OSHA Rule 1926.1431(g) (1)(i)(A) and 1926.1501(g)(4)(iv)(B).

S-13326



**Crosby 8/10™** **Fatigue Rated** **QT** **CE** APPLICATION AND WARNING INFORMATION SECTION 17

### S-1326 SHUR-LOC® Swivel Hooks Suitable for positioning before lifting.

| Chain Size |         | Frame code | Grade 10 Alloy Chain Working Load Limit (t)<br>4:1 Design Factor | Working Load Limit (t)<br>5:1 Design Factor | Stock No. | Weight Each (kg) | Dimensions (mm) |      |     |      |      |      |      |      |      |      |  |
|------------|---------|------------|--|---|-----------|------------------|-----------------|------|-----|------|------|------|------|------|------|------|--|
| (in)       | (mm)    |            |  |   |           |                  | A               | B    | C   | D    | E    | F    | H    | J    | L    | AA*  |  |
| -          | 6       | D          | 1.45   | 1.16  | 1004304   | .57              | 38.1            | 33.5 | 156 | 20.1 | 66.0 | 17.0 | 12.7 | 16.0 | 28.7 | 38.1 |  |
| 1/4 - 5/16 | 7-8     | G          | 2.60   | 2.1   | 1004313   | 1.18             | 44.5            | 40.4 | 193 | 27.9 | 88.9 | 22.1 | 16.0 | 20.6 | 35.1 | 51.0 |  |
| 3/8        | 10      | H          | 4.00   | 3.2   | 1004322   | 2.13             | 50.8            | 43.9 | 224 | 29.7 | 112  | 27.9 | 19.1 | 23.9 | 44.5 | 63.5 |  |
| 1/2        | 13      | I          | 6.80   | 5.4   | 1004331   | 3.92             | 63.5            | 60.5 | 284 | 42.4 | 139  | 32.0 | 25.4 | 29.5 | 53.6 | 76.2 |  |
| 5/8        | 16      | -          | 10.3   | 8.2   | 1004340   | 7.71             | 69.9            | 64.3 | 328 | 51.8 | 167  | 38.1 | 28.7 | 38.1 | 63.2 | 89.0 |  |
| 3/4        | 18 - 20 | -          | 16.0   | 12.8  | 1004349   | 10.9             | 71.9            | 64.0 | 358 | 56.4 | 197  | 51.1 | 27.9 | 51.6 | 89.4 | 127  |  |
| 7/8        | 22      | -          | 20.0   | 16.0  | 1004358   | 13.2             | 87.4            | 81.0 | 417 | 62.2 | 222  | 57.4 | 33.0 | 55.9 | 97.3 | 152  |  |

\*Deformation indicators.

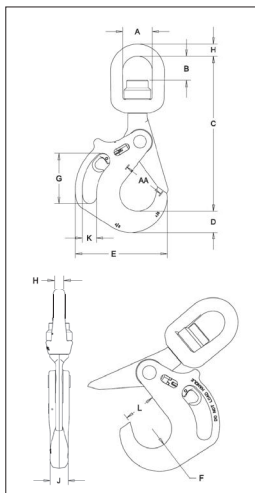
### S-13326 SHUR-LOC® Swivel Hooks with Bearing Suitable for frequent rotation under load.

| Chain Size |      | Frame code | Grade 10 Alloy Chain Working Load Limit (t)<br>4:1 Design Factor | Working Load Limit (t)<br>5:1 Design Factor | Stock No. | Weight Each (kg) | Dimensions (mm) |      |     |      |      |      |      |      |      |      |  |
|------------|------|------------|--|---|-----------|------------------|-----------------|------|-----|------|------|------|------|------|------|------|--|
| (in)       | (mm) |            |  |   |           |                  | A               | B    | C   | D    | E    | F    | H    | J    | L    | AA*  |  |
| -          | 6    | D          | 1.45   | 1.16  | 1004404   | .57              | 38.1            | 29.0 | 157 | 20.1 | 66.0 | 17.0 | 12.7 | 16.0 | 28.7 | 38.1 |  |
| 1/4 - 5/16 | 7-8  | G          | 2.60   | 2.1   | 1004413   | 1.18             | 44.5            | 38.6 | 192 | 27.9 | 89.0 | 22.1 | 16.0 | 20.6 | 35.1 | 51.0 |  |
| 3/8        | 10   | H          | 4.00   | 3.2   | 1004422   | 2.13             | 51.0            | 40.9 | 226 | 29.7 | 112  | 27.9 | 19.1 | 23.9 | 46.5 | 63.5 |  |
| 1/2        | 13   | I          | 6.80   | 5.4   | 1004431   | 3.92             | 63.5            | 51.6 | 282 | 42.4 | 138  | 32.0 | 25.4 | 29.5 | 53.5 | 76.2 |  |
| 5/8        | 16   | -          | 10.3   | 8.2   | 1004440   | 7.71             | 70.0            | 50.3 | 328 | 52.0 | 167  | 38.1 | 28.7 | 38.1 | 63.0 | 89.0 |  |

\*Deformation indicators.

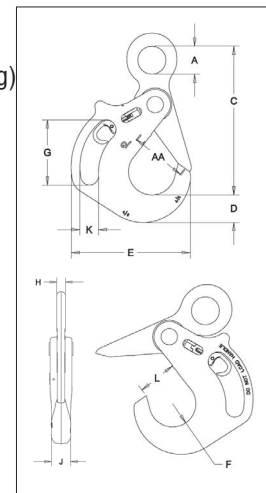


**S-13326H**



- The SHUR-LOC® Handle Hook allows the user to get a confident grip on a load with ease and comfort.
- Designed with a handle opening big enough to comfortably fit a gloved hand.
- Positive lock latch is self-locking when hook is loaded.
- Rated for both wire rope and use with Grade 80/100 chain.
- S-13326H Swivel Hook utilizes anti-friction bearing design which allows hook to rotate freely under load.
- Individually Proof Tested at 2-1/2 times the chain Working Load Limit with certification.
- The replaceable pull-trigger allows the user to easily open the SHUR-LOC's positive self-locking latch.
  - Ergonomically designed for easy use and precise control.
  - Secondary side trigger is recessed to avoid inadvertent release.
- Fatigue rated to 20,000 cycles at 1-1/2 times the Working Load Limit.
- Forged alloy steel, Quenched & Tempered.
- The SHUR-LOC® hook, if properly installed and locked, can be used for personnel lifting applications and meets the intent of OSHA Rule 1926.1431(g)(1)(i)(A) and 1926.1501(g)(4)(iv)(B).

**S-1316AH**



APPLICATION AND WARNING INFORMATION  
SECTION 17

## S-13326H SHUR-LOC® Handle Swivel Hooks with Bearings

| Chain Size |       | Grade 10 Alloy Chain Working Load Limit (t) 4:1* | Working Load Limit (t) 5:1* | Frame Code | Stock No. | Weight Each (kg) | Dimensions (mm) |      |     |    |     |      |     |      |    |      |     |     |
|------------|-------|--|-----------------------------|------------|-----------|------------------|-----------------|------|-----|----|-----|------|-----|------|----|------|-----|-----|
| (in)       | (mm)  |  |                             |            |           |                  | A               | B    | C   | D  | E   | F    | G   | H    | J  | K    | L   | AA* |
| 5/8        | 16    | 10.3   | 8.2                         | JA         | 1005014   | 11.8             | 69.9            | 57.2 | 272 | 50 | 217 | 42.5 | 119 | 28.7 | 44 | 33.5 | 71  | 102 |
| 3/4        | 18/20 | 16.0   | 12.8                        | KA         | 1005023   | 16.8             | 79.2            | 51.9 | 393 | 66 | 255 | 50.5 | 120 | 31.8 | 52 | 32   | 84  | 127 |
| 7/8        | 22    | 19.4   | 15.5                        | LA         | 1005041   | 25.9             | 104             | 92.7 | 482 | 69 | 292 | 57   | 136 | 41.4 | 62 | 40   | 93  | 152 |
| 1          | 26    | 27.1   | 21.7                        | NA         | 1005050   | 38.1             | 127             | 102  | 547 | 79 | 324 | 64   | 164 | 41.4 | 70 | 40   | 104 | 165 |

4:1 Design Factor. \*Deformation indicators.

## S-1316AH SHUR-LOC® Handle Eye Hook

| Chain Size |       | Grade 10 Alloy Chain Working Load Limit (t) 4:1* | Working Load Limit (t) 5:1* | Frame Code | Stock No. | Weight Each (kg) | Dimensions (mm) |       |     |    |     |      |     |    |    |      |     |     |
|------------|-------|--|-----------------------------|------------|-----------|------------------|-----------------|-------|-----|----|-----|------|-----|----|----|------|-----|-----|
| (in)       | (mm)  |  |                             |            |           |                  | A               | B     | C   | D  | E   | F    | G   | H  | J  | K    | L   | AA* |
| 5/8        | 16    | 10.3   | 8.2                         | JA         | 1023579   | 8.2              | 51              | 10.69 | 272 | 50 | 217 | 42.5 | 119 | 20 | 44 | 33.5 | 71  | 102 |
| 3/4        | 18/20 | 16.0   | 12.8                        | KA         | 1023599   | 12.7             | 70              | 12.03 | 306 | 66 | 255 | 50.5 | 120 | 22 | 52 | 32   | 84  | 127 |
| 7/8        | 22    | 19.4   | 15.5                        | LA         | 1023607   | 17.7             | 80              | 13.46 | 342 | 69 | 292 | 57   | 136 | 91 | 62 | 40   | 93  | 152 |
| 1          | 26    | 27.1   | 21.7                        | NA         | 1023625   | 27.2             | 90              | 15.55 | 395 | 79 | 324 | 64   | 164 | 30 | 70 | 40   | 104 | 165 |

4:1 Design Factor. \*Deformation indicators.

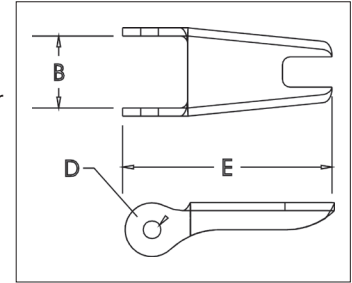


## S-4320 Replacement Latch Kit



- Heavy duty stamped latch interlocks with the hook tip.
- High cycle, long life spring.
- Can be made into a "Positive Locking" Hook when proper cotter pin is utilized.
- Latch kits shipped unassembled and individually packaged with instructions.
- Meets the intent of OSHA Rule 1926.1431(g) and 1926.1501(g)(when secured with the bolt, nut and pin) for lifting personnel.

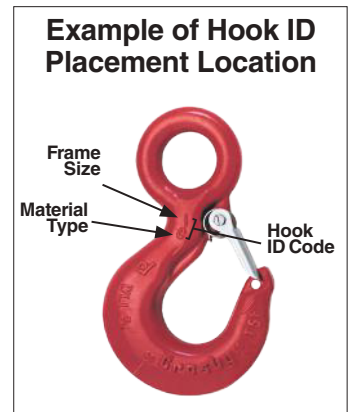
**IMPORTANT:** The new S-4320 Latch Kit will not fit the old style 319, 320 and 322 hooks.



APPLICATION AND WARNING INFORMATION  
SECTION 17

## S-4320 Replacement Latch Kit for 319N, 320N, 322N, 339N, 1327 and 1339 Hooks

| Hook Size (t) |       |        | Hook ID Code | Stock No. | Weight Each (kg) | Dimensions (mm) |      |      |
|---------------|-------|--------|--------------|-----------|------------------|-----------------|------|------|
| Carbon        | Alloy | Bronze |              |           |                  | B               | D    | E    |
| 3/4           | 1     | .5     | D            | 1096325   | .01              | 12.7            | 3.80 | 36.6 |
| 1             | 1-1/2 | .6     | F            | 1096374   | .02              | 13.7            | 4.30 | 39.6 |
| 1-1/2         | 2     | 1      | G            | 1096421   | .02              | 16.0            | 4.30 | 42.2 |
| 2             | 3     | 1.4    | H            | 1096468   | .03              | 16.8            | 4.30 | 48.5 |
| 3             | 5     | 2      | I            | 1096515   | .05              | 21.1            | 5.10 | 58.5 |
| 5             | 7     | 3.5    | J            | 1096562   | .07              | 26.4            | 5.10 | 73.2 |
| 7-1/2         | 11    | 5      | K            | 1096609   | .13              | 31.8            | 6.85 | 90.5 |
| 10            | 15    | 6.5    | L            | 1096657   | .15              | 34.3            | 6.85 | 97.0 |
| 15            | 22    | 10     | N            | 1096704   | .38              | 42.2            | 9.90 | 132  |



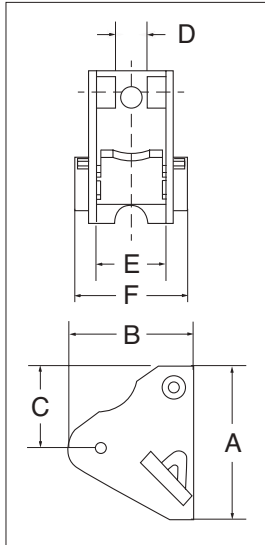
**PL**  
Latch Kits



**LATCH ORDERING INSTRUCTIONS**

Specify PL, PL-N or PL-O latch kit stock number from charts below.  
Specify capacity of hook to which latch will be assembled.  
Specify hook material (carbon or alloy).

- Hot-dip galvanized.
- Heavy duty latch with easy operating features.
- Flapper lever indicates locked or unlocked position.
- Assembly instructions included with each latch.
- For additional dimensional data on eye, shank or swivel hooks, see Warnings & Applications.
- Meets the intent of OSHA Rule 1926.1431(g) and 1926.1501(g) (when secured with the bolt, nut and pin) for lifting personnel.



APPLICATION AND WARNING INFORMATION  
SECTION 17

**PL LATCH KITS**

| Hook Size (t) |         | Hook ID Code | Stock No. | Weight Each (kg) | Dimensions (mm) |      |      |      |      |      |
|---------------|---------|--------------|-----------|------------------|-----------------|------|------|------|------|------|
| Carbon        | Alloy   |              |           |                  | A               | B    | C    | D    | E    | F    |
| 3             | 4-1/2   | I            | 1093711   | .24              | 68.3            | 60.7 | 52.6 | 16.0 | 28.7 | 49.5 |
| 5             | 7       | J            | 1093712   | .30              | 76.0            | 63.2 | 51.0 | 16.0 | 35.1 | 55.9 |
| 7-1/2         | 11      | K            | 1093713   | .45              | 92.0            | 62.5 | 60.5 | 16.0 | 41.4 | 63.2 |
| 10            | 15      | L            | 1093714   | .57              | 102             | 83.1 | 68.5 | 16.0 | 47.8 | 82.6 |
| 15            | 22      | N            | 1093715   | 1.34             | 135             | 106  | 74.0 | 21.3 | 60.5 | 88.6 |
| 20            | 30      | O            | 1093716   | 1.84             | 152             | 115  | 83.3 | 26.9 | 84.1 | 119  |
| 25            | 37      | P            | 1093717   | 3.91             | 178             | 174  | 126  | 57.0 | 60.5 | 155  |
| 30            | 45      | S            | 1093718   | 4.54             | 171             | 183  | 100  | 57.0 | 121  | 162  |
| 40            | 60      | T            | 1093719   | 6.49             | 203             | 202  | 108  | 88.0 | 151  | 196  |
| 50            | 75      | U            | 1093720   | 12.2             | 251             | 213  | 149  | 86.0 | 165  | 226  |
| -             | 100-150 | W - X        | 1093721   | 15.1             | 276             | 276  | 165  | 86.0 | 200  | 254  |
| -             | 200     | Y            | 1093723   | 20.4             | 302             | 284  | 162  | 86.0 | 222  | 286  |
| -             | 300     | Z            | 1093724   | 24.9             | 318             | 315  | 201  | 86.0 | 254  | 311  |

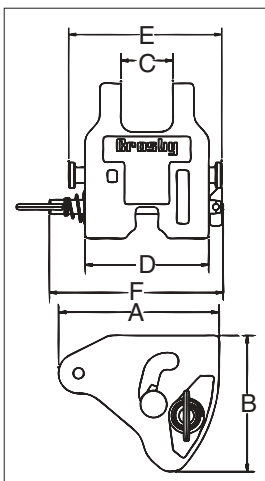
**PL-N/O**  
Latch Kits



**LATCH ORDERING INSTRUCTIONS**

Specify PL, PL-N or PL-O latch kit stock number from charts below.  
Specify capacity of hook to which latch will be assembled.  
Specify hook material (carbon or alloy).

- Heavy duty latch with easy operating features.
- PL-N designed for Crosby 319N & 320N style hooks, PL-O designed for Crosby 319 & 320 old style hooks.
- Flapper lever indicates locked or unlocked position.
- Assembly instructions included with each latch.
- For additional dimensional data on eye, shank or swivel hooks refer to the specific product page in this section.
- Meets the intent of OSHA Rule 1926.1431(g) and 1926.1501(g) (when secured with the supplied toggle pin) for lifting personnel.



APPLICATION AND WARNING INFORMATION  
SECTION 17

**PL-N/O LATCH KITS**

| Hook Size (t) |           | Hook ID Code | PL-N Latch Kit Stock No. | PL-O Latch Kit Stock No. | Weight Each (kg) | Dimensions (mm) |      |      |      |      |      |
|---------------|-----------|--------------|--------------------------|--------------------------|------------------|-----------------|------|------|------|------|------|
| Carbon        | Alloy     |              |                          |                          |                  | A               | B    | C    | D    | E    | F    |
| 3             | 4.5 / 5 * | I            | 1092000                  | 1091900                  | .36              | 60.9            | 51.0 | 21.1 | 54.1 | 68.8 | 87.4 |
| 5             | 7         | J            | 1092001                  | 1091901                  | .58              | 74.7            | 63.5 | 25.4 | 64.0 | 81.0 | 97.3 |
| 7-1/2         | 11        | K            | 1092002                  | 1091902                  | .90              | 92.2            | 76.7 | 30.2 | 69.9 | 87.4 | 111  |
| 10            | 15        | L            | 1092003                  | 1091903                  | 1.27             | 102             | 86.1 | 34.0 | 81.0 | 102  | 114  |
| 15            | 22        | N            | 1092004                  | 1091904                  | 2.22             | 132             | 110  | 40.9 | 98.0 | 122  | 130  |

\*"N" style hooks are rated at 5 metric tons.

## SS-4055 Latch Kits



### LATCH ORDERING INSTRUCTIONS

Specify latch kit stock number.

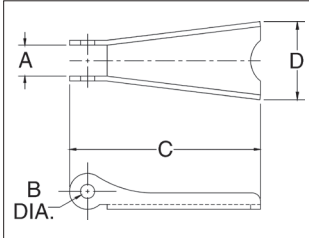
Specify capacity of hook to which latch will be assembled.

Specify hook material (carbon or alloy).

- Stainless steel construction with cadmium plated steel nuts.
- Shipped packaged and unassembled.
- Instructions included for easy field assembly.

APPLICATION AND WARNING INFORMATION  
SECTION 17

### SS-4055 LATCH KITS



| Hook Size (t) |         |           | Hook ID Code | Stock No. | Weight Each (kg) | Dimensions (mm) |      |      |      |
|---------------|---------|-----------|--------------|-----------|------------------|-----------------|------|------|------|
| Carbon        | Alloy   | Bronze    |              |           |                  | A               | B    | C    | D    |
| 3/4           | 1       | .5        | D            | 1090027   | .01              | 9.65            | 4.05 | 36.6 | 15.0 |
| 1             | 1-1/2   | .6        | F            | 1090045   | .01              | 9.65            | 4.05 | 40.6 | 15.0 |
| 1-1/2 - 2     | 2 - 3   | 1.0 - 1.4 | G / H        | 1090063   | .01              | 11.9            | 4.85 | 46.7 | 20.8 |
| 3             | 4-1/2   | 2.0       | I            | 1090081   | .05              | 14.2            | 4.30 | 61.0 | 25.4 |
| 5             | 7       | 3.5       | J            | 1090107   | .05              | 14.7            | 5.10 | 75.5 | 30.7 |
| 7-1/2 - 10    | 11 - 15 | 5.0 - 6.5 | K / L        | 1090125   | .08              | 15.0            | 6.86 | 93.0 | 38.1 |
| 15            | 22      | 10.0      | N            | 1090143   | .18              | 21.1            | 9.90 | 125  | 48.3 |
| 20            | 30      | -         | O            | 1090161   | .29              | 23.9            | 13.2 | 149  | 65.0 |
| 25 - 30       | 37 - 45 | -         | P / S        | 1090189   | .51              | 55.5            | 9.90 | 165  | 97.5 |
| 40            | 60      | -         | T            | 1090205   | .80              | 84.0            | 13.2 | 200  | 105  |

## S-4088

Alloy Hook Latch Kits



### LATCH ORDERING INSTRUCTIONS

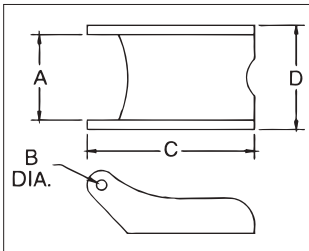
Specify latch kit stock number.

Specify capacity of hook to which latch will be assembled.

Specify hook material (carbon or alloy).

- To be used on A-327 and A-339 Grade 8 sling hooks.
- Latch kits shipped unassembled and individually packaged with instructions.

### S-4088 Alloy Hook Latch Kits



| Hook Chain (mm) | Stock No. | Weight Each (kg) | Dimensions (mm) |      |      |      |
|-----------------|-----------|------------------|-----------------|------|------|------|
|                 |           |                  | A               | B    | C    | D    |
| 6-7             | 1090250   | .03              | 19.8            | 4.05 | 51.5 | 23.9 |
| 8-10            | 1090251   | .06              | 26.2            | 4.85 | 68.5 | 31.8 |
| 13              | 1090252   | .07              | 26.2            | 4.85 | 76.0 | 31.8 |
| 16              | 1090253   | .07              | 26.2            | 4.85 | 82.5 | 31.8 |
| 19              | 1090254   | .07              | 38.9            | 6.60 | 105  | 47.8 |
| 22              | 1090255   | .07              | 38.9            | 6.60 | 118  | 51.0 |

## HOOK CONNECTORS

The 5 connector styles shown below make it possible for Crosby to furnish a Golden Gate Hook to fit almost any make or model of hoisting equipment including, American Engineering Lo-Hed, ARO, Coffing, Electro Lift, Ingersoll-Rand, P & H, Robbins and Myers, Shepard Niles, CM, Shaw-Box, Wright, Yale & Towne.

### CLOSED SWIVEL BAIL

For use where hoisting line or shackle can be inserted into the bail. Suitable for positioning before lifting. Hook sizes: 1 through 14.

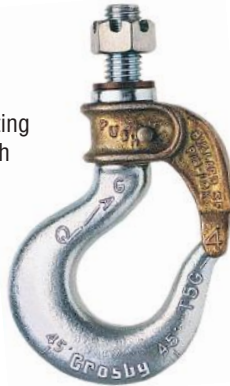


**Style C** — with self-closing gate.  
**Style A** — with manual-closing gate.

### SHANK-TYPE HOOK

(Standard Length)

For use on existing load blocks, with standard shank length. Hook sizes: 2 through 14.

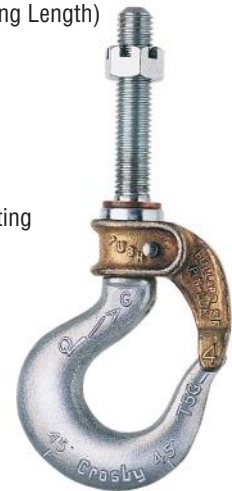


**Style D** — with self-closing gate.  
**Style B** — with manual-closing gate.

### SHANK-TYPE HOOK

(Long Length)

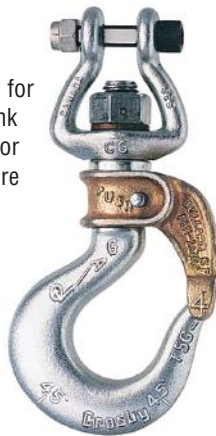
For use on existing load blocks requiring extra shank length. Hook sizes: 4 through 17.



**Style K** — with self-closing gate.  
**Style I** — with manual-closing gate.

### UNIVERSAL TYPE

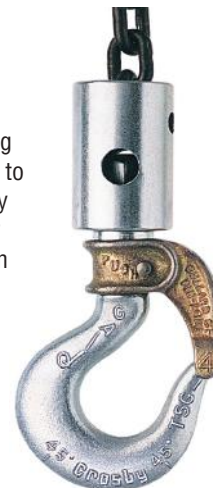
Open swivel bail for attachment to link chain. Suitable for positioning before lifting. Hook sizes: 3, 4, and 5.



**Style E** — with self-closing gate.  
**Style G** — with manual-closing gate.

### LINK CHAIN NEST

With ball-bearing swivel; attaches to chain by an alloy pin. Suitable for frequent rotation under load. Hook sizes: 4, 5, and 7.



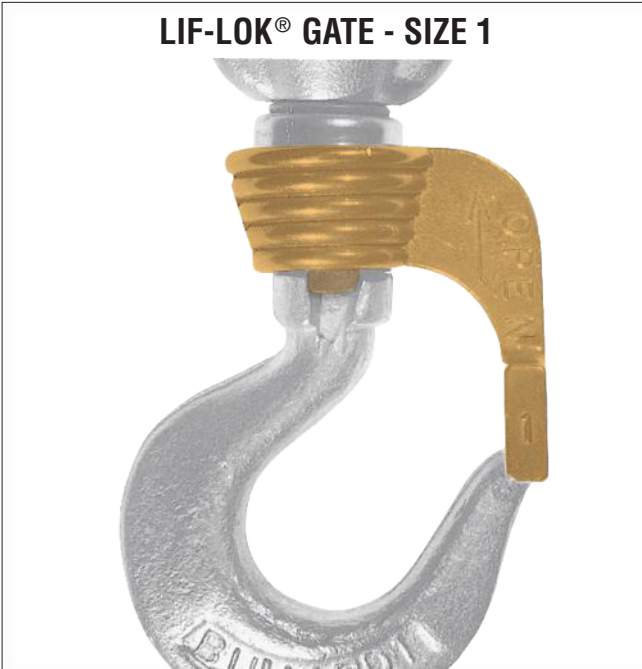
**Style O** — with self-closing gate.  
**Style P** — with manual-closing gate.

Letter designations shown beneath each illustration above indicate BOTH connector style and gate type. Each connector is available with either a self-closing or manual-closing gate. (e.g. A size 4 hook with a closed swivel bail connector and self-closing gate is 4-C; with manual-closing gate, it is 4-A.)

## GATE TYPES

Brass alloy Golden Gates® are engineered for quality, easy handling and dependability. The heavy duty, corrosion resistant locking mechanism will stay locked until an operator releases it; yet, can easily be shut with one hand. Cost effective, these gates reduce down time, providing the alternative to conventional latches.

**LIF-LOK® GATE - SIZE 1**



**To lock:** Close the gate; the built-in spring locks the gate against the hook tip.

**To Unlock:** Lift the gate upward on the hook shank and swing open.

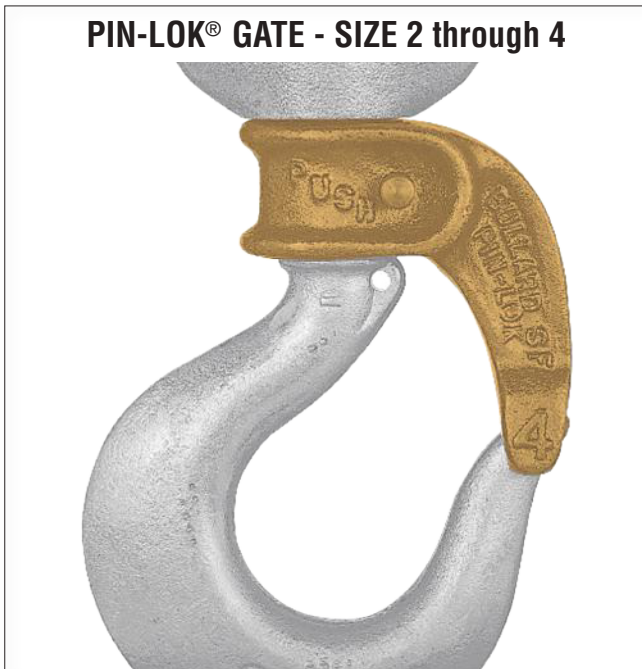
**ROLLOX® GATE - SIZE 5 through 9**



**To Lock:** Close the gate; a stainless steel pin is mounted in a horizontal bore which passes through the gate and engages a notch milled in the hook shank.

**To Unlock:** Move the lever downward a quarter-turn or until it stops, the gate can now swing open 160° (approx.)

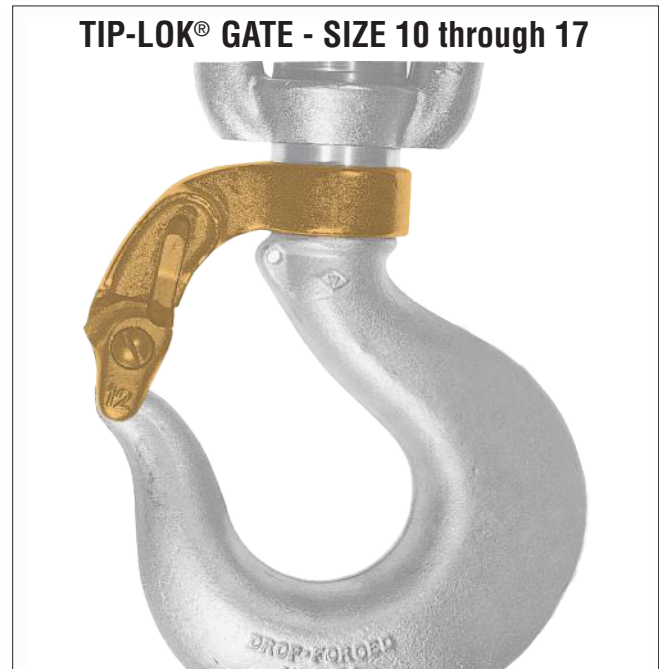
**PIN-LOK® GATE - SIZE 2 through 4**



**To Lock:** Close the gate; a stainless steel pin is carried in a horizontal bore and engages a milled slot in the hook shank.

**To Unlock:** Simply depress the stainless steel pin which causes the pin to disengage from the milled slot.

**TIP-LOK® GATE - SIZE 10 through 17**



**To Lock:** Press the arm down until the lock trips; two arms of the gate now enclose the tip of the hook.

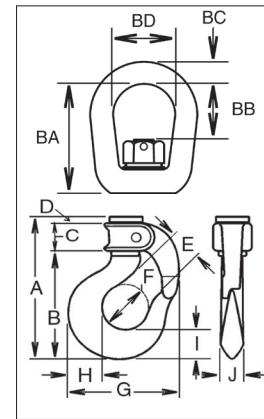
**To Unlock:** Manually depressing the locking trigger automatically raises the movable arm, allowing the gate to be rotated open.



## Closed Swivel Bail



- For use where hoisting line or shackle can be inserted into the bail.
  - BL-C with self-closing gate
  - BL-A with manual-closing gate
- Suitable for positioning before lifting.
- Crosby Bullard® Hooks incorporate QUIC-CHECK® deformation and angle indicators. (For detailed information, see the Crosby Value Added page at the beginning of this section.)



APPLICATION AND WARNING INFORMATION  
SECTION 17

## Closed Swivel Bail

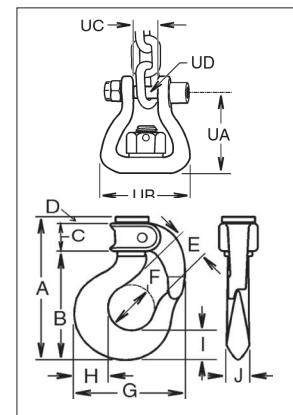
| Hook Size | BL-C Stock No. | BL-A Stock No. | Gate Type | Working Load Limit (t) | Weight Each (kg) | Dimensions (mm) |      |      |      |      |      |      |      |      |      |      |      |      |      |
|-----------|----------------|----------------|-----------|------------------------|------------------|-----------------|------|------|------|------|------|------|------|------|------|------|------|------|------|
|           |                |                |           |                        |                  | A               | B    | C    | D    | E    | F    | G    | H    | I    | J    | BA   | BB   | BC   | BD   |
| 1         | 1050210        | 1050001        | LIF-LOK   | .45                    | .36              | 82.0            | 58.7 | 16.0 | 6.60 | 17.5 | 22.4 | 57.0 | 17.5 | 16.0 | 11.2 | 44.5 | 16.0 | 7.85 | 25.4 |
| 2         | 1050221        | 1050012        | PIN-LOK   | .90                    | .59              | 105             | 76.2 | 23.6 | 4.06 | 24.6 | 31.8 | 73.0 | 20.6 | 19.1 | 11.2 | 47.2 | 24.1 | 9.65 | 31.8 |
| 3         | 1050232        | 1050023        | PIN-LOK   | 1.3                    | .86              | 114             | 84.0 | 23.9 | 5.58 | 26.9 | 35.1 | 84.0 | 23.9 | 21.3 | 16.0 | 62.0 | 33.3 | 12.7 | 38.1 |
| 4         | 1050243        | 1050034        | PIN-LOK   | 1.5                    | 1.00             | 124             | 92.2 | 25.4 | 5.58 | 28.7 | 38.1 | 92.0 | 29.5 | 25.4 | 19.1 | 67.5 | 34.3 | 12.7 | 38.1 |
| 5         | 1050254        | 1050045        | ROLLOX    | 2.1                    | 1.72             | 143             | 105  | 31.2 | 6.35 | 31.8 | 41.7 | 104  | 33.3 | 28.4 | 21.3 | 74.0 | 40.6 | 16.0 | 44.5 |
| 6         | 1050265        | 1050056        | ROLLOX    | 3.6                    | 2.09             | 158             | 119  | 31.8 | 6.35 | 35.3 | 41.7 | 116  | 39.9 | 34.0 | 24.6 | 78.5 | 35.8 | 16.0 | 44.5 |
| 7         | 1050276        | 1050067        | ROLLOX    | 3.8                    | 3.13             | 168             | 132  | 28.4 | 6.35 | 38.1 | 51.0 | 125  | 41.4 | 36.6 | 28.7 | 88.5 | 42.4 | 19.1 | 51.0 |
| 8         | 1050287        | 1050078        | ROLLOX    | 5.0                    | 4.35             | 182             | 147  | 26.9 | 7.11 | 44.5 | 57.0 | 148  | 51.0 | 41.9 | 31.2 | 103  | 51.0 | 22.4 | 57.0 |
| 9         | 1050298        | 1050089        | ROLLOX    | 6.5                    | 6.12             | 199             | 164  | 26.9 | 7.87 | 47.8 | 63.5 | 165  | 52.5 | 46.0 | 35.1 | 118  | 56.0 | 26.2 | 63.5 |
| 11        | 1050309        | 1050100        | TIP-LOK   | 8.3                    | 9.30             | 244             | 203  | 31.8 | 7.87 | 57.0 | 76.0 | 192  | 67.0 | 57.0 | 41.1 | 124  | 66.5 | 28.7 | 70.0 |
| 12        | 1050320        | 1050111        | TIP-LOK   | 11.1                   | 12.3             | 267             | 225  | 31.8 | 9.65 | 63.5 | 82.5 | 221  | 74.5 | 65.5 | 49.3 | 130  | 57.0 | 31.8 | 79.5 |
| 14        | 1050342        | 1050133        | TIP-LOK   | 16.7                   | 25.0             | 320             | 273  | 35.8 | 9.65 | 86.0 | 108  | 279  | 89.0 | 75.5 | 60.5 | 203  | 108  | 41.4 | 104  |

4:1 Design Factor.

## Open Swivel Bail



- Open Swivel Bail for attachment to link chain.
  - BL-E with self-closing gate
  - BL-G with manual-closing gate
- Suitable for positioning before lifting.
- Crosby Bullard® Hooks incorporate QUIC-CHECK® deformation and angle indicators. (For detailed information, see the Crosby Value Added page at the beginning of this section.)



## Open Swivel Bail

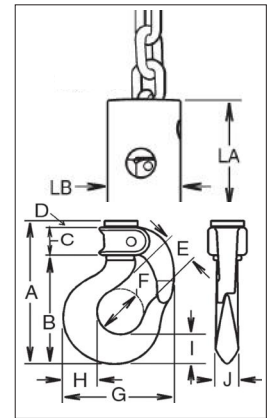
| Hook Size | BL-E Stock No. | BL-G Stock No. | Gate Type | Working Load Limit (t) | Weight Each (kg) | Dimensions (mm) |      |      |      |      |      |      |      |      |      |      |      |      |      |
|-----------|----------------|----------------|-----------|------------------------|------------------|-----------------|------|------|------|------|------|------|------|------|------|------|------|------|------|
|           |                |                |           |                        |                  | A               | B    | C    | D    | E    | F    | G    | H    | I    | J    | UA   | UB   | UC   | UD   |
| 3         | 1051607        | 1051706        | PIN-LOK   | 1.3                    | .81              | 114             | 84.5 | 23.9 | 5.58 | 26.9 | 35.1 | 81.0 | 23.9 | 21.3 | 16.0 | 53.0 | 59.0 | 13.2 | 9.65 |
| 4         | 1051618        | 1051717        | PIN-LOK   | 1.5                    | .95              | 124             | 92.2 | 25.4 | 5.58 | 28.7 | 38.1 | 92.0 | 29.5 | 25.4 | 19.1 | 54.5 | 59.0 | 13.2 | 9.65 |
| 5         | 1051629        | 1051728        | ROLLOX    | 2.1                    | 1.45             | 143             | 105  | 31.2 | 6.35 | 31.8 | 41.7 | 104  | 33.3 | 28.4 | 21.3 | 65.0 | 67.0 | 15.7 | 11.2 |

4:1 Design Factor.

## Link Chain Nest



- With ball bearing swivel; attaches to chain by an alloy pin.
  - BL-O with self-closing gate
  - BL-P with manual-closing gate
- Suitable for frequent rotation under load.
- Crosby Bullard® Hooks incorporate QUIC-CHECK® deformation and angle indicators. (For detailed information, see the Crosby Value Added page at the beginning of this section.)



4



APPLICATION AND WARNING INFORMATION  
SECTION 17

## Link Chain Nest

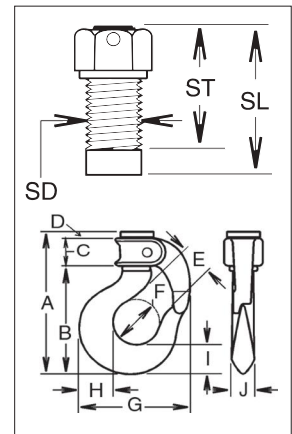
| Chain Size | BL-O Stock No. | BL-P Stock No. | Gate Type | Working Load Limit (t) | Weight Each (kg) | Dimensions (mm) |      |      |      |      |      |      |      |      |      |      |      |
|------------|----------------|----------------|-----------|------------------------|------------------|-----------------|------|------|------|------|------|------|------|------|------|------|------|
|            |                |                |           |                        |                  | A               | B    | C    | D    | E    | F    | G    | H    | I    | J    | LA   | LB   |
| 4:1/4-9/32 | 1051409        | 1051508        | PIN-LOK   | 1.5                    | 1.13             | 124             | 92.2 | 25.4 | 5.58 | 28.7 | 38.1 | 92.0 | 29.5 | 25.4 | 19.1 | 67.0 | 44.5 |
| 5:5/16-3/8 | 1051442        | 1051541        | ROLLOX    | 2.1                    | 2.04             | 143             | 105  | 31.2 | 6.35 | 31.8 | 41.7 | 104  | 33.3 | 28.4 | 21.3 | 76.0 | 57.0 |
| 7:3/8-7/16 | 1051464        | 1051563        | ROLLOX    | 3.8                    | 5.0              | 168             | 132  | 28.4 | 6.35 | 38.1 | 51.0 | 125  | 41.4 | 36.6 | 28.7 | 111  | 76.0 |
| 7:1/2-9/16 | 1051486        | 1051585        | ROLLOX    | 3.8                    | 5.0              | 168             | 132  | 28.4 | 6.35 | 38.1 | 51.0 | 125  | 41.4 | 36.6 | 28.7 | 111  | 76.0 |

4:1 Design Factor.

## Standard Length



- For use on existing load blocks, with standard shank length.
  - BL-D with self-closing gate
  - BL-B with manual-closing gate
- Numbers 2 through 12 style hooks are threaded approximately 80% of shank length.
- Crosby Bullard® Hooks incorporate QUIC-CHECK® deformation and angle indicators. (For detailed information, see the Crosby Value Added page at the beginning of this section.)



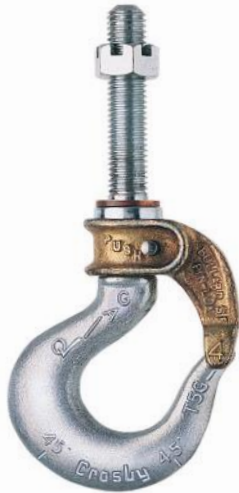
APPLICATION AND WARNING INFORMATION  
SECTION 17

## Standard Length Shank Hooks

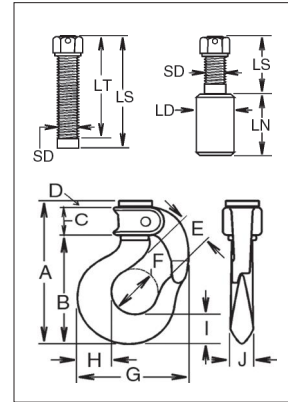
| Hook Size | BL-D Stock No. | BL-B Stock No. | Gate Type | Working Load Limit (t) | Weight Each (kg) | Dimensions (mm) |      |      |      |      |      |      |      |      |      |      |      |      |
|-----------|----------------|----------------|-----------|------------------------|------------------|-----------------|------|------|------|------|------|------|------|------|------|------|------|------|
|           |                |                |           |                        |                  | A               | B    | C    | D    | E    | F    | G    | H    | I    | J    | SD   | SL   | ST   |
| 2         | 1050606        | 1050408        | PIN-LOK   | .91                    | .50              | 105             | 76.2 | 23.6 | 4.06 | 24.6 | 31.8 | 73.0 | 20.6 | 19.1 | 14.2 | 12.7 | 23.1 | 15   |
| 3         | 1050617        | 1050419        | PIN-LOK   | 1.3                    | .59              | 114             | 84.1 | 23.9 | 5.58 | 26.9 | 35.1 | 81.0 | 23.9 | 21.3 | 16.0 | 14.2 | 31.8 | 19.1 |
| 4         | 1050628        | 1050430        | PIN-LOK   | 1.5                    | .77              | 124             | 92.2 | 25.4 | 5.58 | 28.7 | 38.1 | 92.0 | 29.5 | 25.4 | 19.1 | 16   | 33.3 | 30.2 |
| 5         | 1050639        | 1050441        | ROLLOX    | 2.1                    | 1.13             | 143             | 105  | 31.2 | 6.35 | 31.8 | 41.7 | 104  | 33.3 | 28.4 | 21.3 | 19.1 | 33.3 | 25.4 |
| 6         | 1050650        | 1050452        | ROLLOX    | 3.6                    | 1.59             | 158             | 119  | 31.8 | 6.35 | 35.3 | 41.7 | 116  | 39.9 | 34.0 | 24.6 | 22.4 | 43   | 29.5 |
| 7         | 1050661        | 1050463        | ROLLOX    | 3.8                    | 2.36             | 168             | 132  | 28.4 | 6.35 | 38.1 | 51.0 | 125  | 41.4 | 36.6 | 28.7 | 25.4 | 46   | 35.1 |
| 8         | 1050672        | 1050474        | ROLLOX    | 5.0                    | 3.22             | 182             | 147  | 26.9 | 7.11 | 44.5 | 57.0 | 148  | 51.0 | 41.9 | 31.2 | 28.7 | 52.5 | 38.1 |
| 9         | 1050683        | 1050485        | ROLLOX    | 6.5                    | 4.31             | 199             | 164  | 26.9 | 7.87 | 47.8 | 63.5 | 165  | 52.5 | 46.0 | 35.1 | 31.8 | 62   | 46   |
| 11        | 1050694        | 1050496        | TIP-LOK   | 8.3                    | 7.08             | 244             | 203  | 31.8 | 7.87 | 57.0 | 76.0 | 192  | 67.0 | 57.0 | 41.1 | 38.1 | 68.5 | 47.8 |
| 12        | 1050705        | 1050507        | TIP-LOK   | 11.2                   | 9.53             | 267             | 225  | 31.8 | 9.65 | 63.5 | 82.5 | 221  | 74.5 | 65.5 | 49.3 | 41.4 | 73   | 54   |
| 13        | 1050716        | 1050518        | TIP-LOK   | 13.6                   | 13.6             | 285             | 242  | 31.8 | 9.65 | 76.0 | 95.0 | 245  | 83.5 | 70.0 | 49.3 | 44.5 | 89   | 56   |
| 14        | 1050727        | 1050529        | TIP-LOK   | 16.8                   | 18.1             | 320             | 273  | 35.8 | 9.65 | 86.0 | 108  | 279  | 89.0 | 75.5 | 60.5 | 51   | 92.5 | 60.5 |

4:1 Design Factor.

## Long Length



- For use on existing load blocks requiring extra shank length.
  - BL-K with self-closing gate
  - BL-I with manual closing gate
- Numbers 4 through 9 style hooks are threaded approximately 80% of shank length.
- Crosby Bullard® Hooks incorporate QUIC-CHECK® deformation and angle indicators.



APPLICATION AND WARNING INFORMATION  
SECTION 17

## Long Length Shank Hooks

| Hook Size | BL-K Stock No. | BL-I Stock No. | Gate Type | Working Load Limit (t) | Weight Each (kg) | Dimensions (mm) |      |      |      |      |      |      |      |      |      |      |      |      |      |
|-----------|----------------|----------------|-----------|------------------------|------------------|-----------------|------|------|------|------|------|------|------|------|------|------|------|------|------|
|           |                |                |           |                        |                  | A               | B    | C    | D    | E    | F    | G    | H    | I    | J    | SD   | LN   | LS   | LT   |
| 4 :1/2    | 1051002        | 1050804        | PIN-LOK   | 1.45                   | .86              | 124             | 92.2 | 25.4 | 5.58 | 28.7 | 38.1 | 92.0 | 29.5 | 25.4 | 19.1 | 12.7 | 11.2 | 81.0 | 81.0 |
| 4 :9/16   | 1051013        | 1050815        | PIN-LOK   | 1.5                    | .86              | 124             | 92.2 | 25.4 | 5.58 | 28.7 | 38.1 | 92.0 | 29.5 | 25.4 | 19.1 | 14.2 | 12.2 | 81.0 | 81.0 |
| 4 :5/8    | 1051024        | 1050826        | PIN-LOK   | 1.5                    | .86              | 124             | 92.2 | 25.4 | 5.58 | 28.7 | 38.1 | 92.0 | 29.5 | 25.4 | 19.1 | 16.0 | 14.0 | 84.0 | 81.0 |
| 5         | 1051035        | 1050837        | ROLLOX    | 2.1                    | 1.36             | 143             | 105  | 31.2 | 6.35 | 31.8 | 41.7 | 104  | 33.3 | 28.4 | 21.3 | 19.1 | 16.0 | 90.5 | 82.5 |
| 6         | 1051046        | 1050848        | ROLLOX    | 3.6                    | 1.72             | 158             | 119  | 31.8 | 6.35 | 35.3 | 41.7 | 116  | 39.9 | 34.0 | 24.6 | 22.4 | 19.1 | 103  | 90.0 |
| 7         | 1051057        | 1050859        | ROLLOX    | 3.8                    | 2.68             | 168             | 132  | 28.4 | 6.35 | 38.1 | 51.0 | 125  | 41.4 | 36.6 | 28.7 | 25.4 | 22.4 | 116  | 105  |
| 8         | 1051068        | 1050870        | ROLLOX    | 5.0                    | 3.54             | 182             | 147  | 26.9 | 7.11 | 44.5 | 57.0 | 148  | 51.0 | 41.9 | 31.2 | 28.4 | 23.9 | 129  | 114  |
| 9         | 1051079        | 1050881        | ROLLOX    | 6.5                    | 4.90             | 199             | 164  | 26.9 | 7.87 | 47.8 | 63.5 | 165  | 52.5 | 46.0 | 35.1 | 31.8 | 26.9 | 141  | 125  |
| 12 ‡      | 1051101        | 1050903        | TIP-LOK   | 11.2                   | 12.7             | 267             | 225  | 31.8 | 9.65 | 63.5 | 82.5 | 221  | 74.5 | 65.5 | 49.3 | 41.4 | 39.6 | 137  | 118  |
| 13 ‡      | 1051112        | 1050914        | TIP-LOK   | 13.6                   | 15.9             | 285             | 242  | 31.8 | 9.65 | 76.0 | 95.5 | 245  | 83.5 | 70.0 | 49.3 | 44.5 | 38.1 | 187  | 146  |
| 14 ‡      | 1051123        | 1050925        | TIP-LOK   | 16.8                   | 20.4             | 320             | 273  | 35.8 | 9.65 | 86.0 | 108  | 279  | 89.0 | 75.5 | 60.5 | 51.0 | 50.8 | 137  | 102  |
| 16        | 1051134        | 1050936        | TIP-LOK   | 30.0                   | 46.7             | 388             | 332  | 38.1 | 16.0 | 102  | 127  | 346  | 118  | 92.0 | 76.0 | 70.0 | 70.0 | 406  | 178  |
| 17        | 1051156        | 1050958        | TIP-LOK   | 60.0                   | 168              | 615             | 522  | 66.8 | 23.9 | 146  | 178  | 470  | 165  | 152  | 113  | 102  | 100  | 578  | 356  |

4:1 Design Factor. ‡Hook will have the shank extended by use of a Coupling Nut. Customer is required to complete and approve side 2 of a Crosby Bullard® hook data form.

## Crosby® / Bullard Golden Gate Hooks Service Parts

| Hook Size | Gate Type | BL-GA Gate Assemblies  |                      | BL-RK Gate Repair Kit Stock No. |
|-----------|-----------|------------------------|----------------------|---------------------------------|
|           |           | Manual Close Stock No. | Self Close Stock No. |                                 |
| 2         | PIN-LOK   | 1100298                | 1100309              | 1100101                         |
| 3         | PIN-LOK   | 1100320                | 1100331              | 1100102                         |
| 4         | PIN-LOK   | 1100342                | 1100353              | 1100103                         |
| 5         | ROLLOX    | 1100364                | 1100375              | 1100112                         |
| 6         | ROLLOX    | 1100386                | 1100397              | 1100113                         |
| 7         | ROLLOX    | 1100408                | 1100419              | 1100123                         |
| 8         | ROLLOX    | 1100430                | 1100441              | 1100124                         |
| 9         | ROLLOX    | 1100452                | 1100463              | 1100125                         |
| 10        | TIP-LOK   | 1100474                | 1100485              | 1100133                         |
| 11        | TIP-LOK   | 1100496                | 1100507              | 1100144                         |
| 12        | TIP-LOK   | 1100518                | 1100529              | 1100155                         |
| 13        | TIP-LOK   | 1100540                | 1100551              | 1100166                         |
| 14        | TIP-LOK   | 1100562                | 1100573              | 1100177                         |
| 15        | TIP-LOK   | 1100584                | 1100595              | 1100188                         |
| 16        | TIP-LOK   | 1100606                | 1100617              | 1100199                         |
| 17        | TIP-LOK   | 1100639                | 1100628              | 1100210                         |

## Bullard® QUIC-CHECK® Deformation Indicator Table

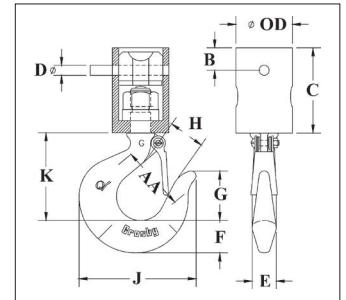
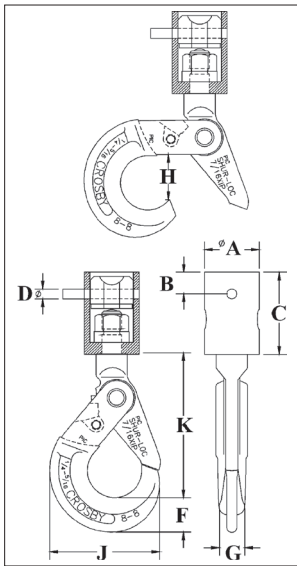
| Hook Size | Hook ID Code | AA (mm) |
|-----------|--------------|---------|
| 1         | 1            | 38.1    |
| 2         | D            | 38.1    |
| 3         | F            | 38.1    |
| 4         | G            | 50.8    |
| 5         | H            | 50.8    |
| 6         | 6            | 63.5    |
| 7         | I            | 63.5    |
| 8         | 8            | 76.2    |
| 9         | J            | 101.6   |
| 11        | K            | 101.6   |
| 12        | L            | 101.6   |
| 13        | 13           | 127.0   |
| 14        | N            | 127.0   |
| 16        | O            | 165.1   |
| 17        | T            | 254.0   |

O-318



- With ball bearing swivel; attaches to chain by an alloy pin.
- Suitable for frequent rotation under load.
- O-318 Hooks utilize Crosby SHUR-LOC® positive locking hooks. Latch is self-locking when hook is loaded.
- O-319 Hooks utilize Crosby® standard 319 Shank Hooks which incorporate QUIC-CHECK® deformation and angle indicators. (For detailed information, see the Crosby Value Added page at the beginning of this section.)
- Entire assembly is zinc plated.
- Repair kit available consisting of bearing and spring pin.

O-319



APPLICATION AND WARNING INFORMATION  
SECTION 17

## O-318 Chain Nest Hooks

| Chain Size (mm) | Stock No. | Working Load Limit (t) | Weight Each (kg) | Dimensions (mm) |      |      |      |      |      |      |      |     |
|-----------------|-----------|------------------------|------------------|-----------------|------|------|------|------|------|------|------|-----|
|                 |           |                        |                  | A               | B    | C    | D    | F    | G    | H    | J    | K   |
| 6 - 7           | 1098409   | 1.5                    | 1.59             | 44.5            | 17.8 | 66.5 | 7.87 | 27.9 | 20.6 | 37.1 | 89.0 | 117 |
| 8 - 10          | 1098427   | 2.1                    | 2.72             | 54.0            | 17.8 | 81.0 | 9.65 | 29.2 | 23.9 | 46.5 | 110  | 144 |
| 10 - 11         | 1098445   | 3.8                    | 6.24             | 76.0            | 25.4 | 111  | 12.7 | 42.2 | 29.5 | 53.5 | 138  | 179 |
| 13 - 14         | 1098463   | 3.8                    | 6.24             | 76.0            | 25.4 | 111  | 16.0 | 42.2 | 29.5 | 53.5 | 138  | 179 |

4:1 Design Factor.

## O-319 Chain Nest Hooks

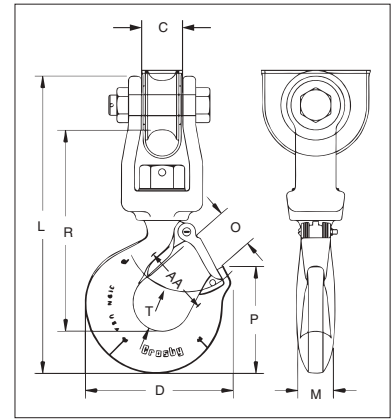
| Chain Size (mm) | Stock No. | Working Load Limit (t) | Weight Each (kg) | Dimensions (mm) |      |      |      |      |      |      |      |      |      |      |
|-----------------|-----------|------------------------|------------------|-----------------|------|------|------|------|------|------|------|------|------|------|
|                 |           |                        |                  | OD              | AA   | B    | C    | D    | E    | F    | G    | H    | J    | K    |
| 6 - 7           | 1098312   | 1.5                    | 1.16             | 44.5            | 51.0 | 17.8 | 66.5 | 7.87 | 19.1 | 25.4 | 38.9 | 25.4 | 92.0 | 68.5 |
| 8 - 10          | 1098334   | 2.1                    | 1.81             | 54.0            | 51.0 | 17.8 | 81.0 | 9.65 | 21.3 | 28.4 | 43.7 | 28.4 | 104  | 77.5 |
| 10 - 11         | 1098356   | 3.8                    | 4.54             | 76.0            | 63.5 | 25.4 | 111  | 12.7 | 28.4 | 36.6 | 54.0 | 34.0 | 123  | 96.0 |
| 13 - 14         | 1098378   | 3.8                    | 4.54             | 76.0            | 63.5 | 25.4 | 111  | 16.0 | 28.4 | 36.6 | 54.0 | 34.0 | 123  | 96.0 |

4:1 Design Factor. \*Deformation indicators.

## S-3319



- Designed for utility applications using synthetic rope.
- Suitable for positioning before lifting.
- Hook is forged alloy steel, Quenched & Tempered.
- Design of hook provides needed overhaul weight.
- Utilizes spool & shield designed to protect rope and keep rope positioned correctly on spool.
- Spool provides wider rope bearing surface resulting in an increased area for load distribution and reduces rope abrasion.



APPLICATION AND WARNING INFORMATION  
SECTION 17

### S-3319 Utility Swivel Hook

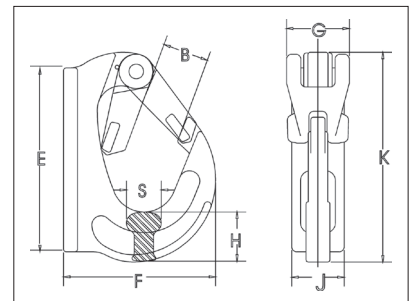
| Working Load Limit (t) | Stock No. | Weight Each (kg) | Hook ID Code | Synthetic Rope Size (mm) | Dimensions (mm) |     |     |      |      |      |     |      |      | Replacement Latch Kit Stock No. |
|------------------------|-----------|------------------|--------------|--------------------------|-----------------|-----|-----|------|------|------|-----|------|------|---------------------------------|
|                        |           |                  |              |                          | C               | D   | L   | M    | O    | P    | R   | T    | AA*  |                                 |
| 1.63                   | 1002054   | 1.90             | HA           | 14 - 16                  | 27.7            | 101 | 222 | 23.9 | 29.5 | 70.6 | 151 | 29.5 | 2.00 | 1096468                         |
| 2.50                   | 1002063   | 3.62             | IA           | 19 - 21                  | 33.2            | 123 | 268 | 30.2 | 35.8 | 88.1 | 179 | 38.9 | 2.50 | 1096515                         |
| 4.50                   | 1002072   | 6.80             | JA           | 22 - 27                  | 45.2            | 160 | 324 | 36.6 | 45.2 | 117  | 221 | 49.3 | 3.00 | 1096562                         |

5:1 Design Factor. Maximum allowable proof load is 2 times the Working Load Limit. \*Deformation indicators.

## BH-313



- Wide range of sizes available: 1-10 metric ton capacity.
- Forged alloy steel.
- Designed for attachment to mobile lifting equipment to provide a pick point for easy sling attachment.
- Large weld pad.
- Heavy duty latch interlocks with the hook tip. Replacement latches are available.
- Detailed installation and application instructions included with each hook.



### BH-313 Weld-On Hooks

| Working Load Limit (t) | Stock No. | Weight Each (kg) | Dimensions (mm) |      |      |      |      |      |     |      | Replacement Latch Stock No. |
|------------------------|-----------|------------------|-----------------|------|------|------|------|------|-----|------|-----------------------------|
|                        |           |                  | B               | E    | F    | G    | H    | J    | K   | S    |                             |
| 1                      | 1029105   | .52              | 23.1            | 97.0 | 71.0 | 36.1 | 26.9 | 25.9 | 107 | 18.0 | 1092104                     |
| 2                      | 1029114   | .84              | 23.1            | 82.0 | 91.0 | 36.1 | 24.9 | 34.0 | 115 | 21.1 | 1092104                     |
| 3                      | 1029123   | 1.18             | 29.0            | 117  | 105  | 36.1 | 31.0 | 36.1 | 131 | 23.9 | 1092104                     |
| 4                      | 1029132   | 1.90             | 34.0            | 131  | 114  | 46.0 | 36.1 | 42.9 | 147 | 29.0 | 1092105                     |
| 5                      | 1029141   | 2.55             | 34.0            | 161  | 133  | 47.0 | 45.0 | 43.9 | 173 | 29.0 | 1092105                     |
| 8                      | 1029150   | 3.30             | 35.1            | 166  | 135  | 47.0 | 52.0 | 52.0 | 178 | 39.1 | 1092105                     |
| 10                     | 1029169   | 5.00             | 49.0            | 205  | 168  | 47.0 | 57.0 | 54.0 | 222 | 39.1 | 1092106                     |

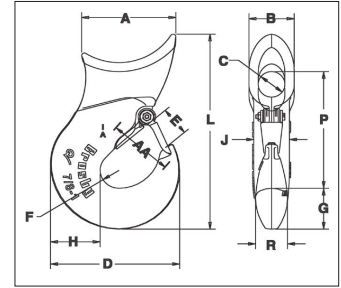
5:1 Design Factor.



## A-350L



- New style incorporates throat opening equal to or larger than old style hooks.
- Each product has a Product Identification Code (PIC) for material traceability, along with a Working Load Limit, and the name Crosby or "CG" forged into it.
- All hooks incorporate Crosby's patented QUIC-CHECK® deformation indicators to help in determining if throat opening dimension has changed.
- Each hook is equipped with a Crosby S-4320 heavy duty stamped latch with the high cycle, long life spring.
- Forged alloy steel, Quenched & Tempered.



4

### A-350L Sliding Choker Hook



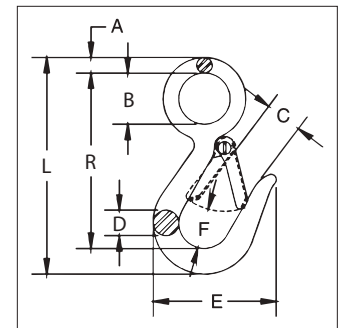
| Single Part Rope Size (in. - mm) | Eight Part Rope Size (mm) | Stock No. | WLL (t) | Weight Each (kg) | Dimensions (mm) |      |      |      |      |      |      |      |     |      |      |      |    | Hook Frame Code | Replacement Latch Kit Stock No. |
|----------------------------------|---------------------------|-----------|---------|------------------|-----------------|------|------|------|------|------|------|------|-----|------|------|------|----|-----------------|---------------------------------|
|                                  |                           |           |         |                  | A               | B    | C    | D    | E    | F    | G    | H    | L   | P    | R    | AA*  |    |                 |                                 |
| 3/8 - 10                         | -                         | 1011802   | 1.13    | .35              | 52.5            | 28.7 | 16.0 | 61.0 | 16.0 | 9.65 | 21.3 | 23.1 | 109 | 66.0 | 16.0 | 38.1 | DA | 1096325         |                                 |
| 1/2 - 13                         | 3                         | 1011811   | 1.50    | .54              | 57.0            | 33.3 | 19.1 | 75.5 | 19.8 | 12.7 | 24.6 | 26.9 | 126 | 78.5 | 19.1 | 38.1 | FA | 1096374         |                                 |
| † 5/8 - 16                       | -                         | 1011820   | 2.27    | 1.31             | 77.5            | 41.4 | 19.1 | 90.5 | 23.9 | 14.2 | 28.7 | 33.3 | 162 | 98.5 | 25.4 | 50.8 | GA | 1096421         |                                 |
| † 5/8 - 16                       | 4                         | 1011839   | 2.27    | 1.22             | 77.5            | 41.4 | 25.4 | 90.5 | 23.9 | 14.2 | 28.7 | 33.3 | 162 | 102  | 28.7 | 50.8 | GA | 1096421         |                                 |
| † 3/4 - 20                       | -                         | 1011848   | 3.63    | 2.35             | 86.0            | 54.0 | 25.4 | 108  | 29.5 | 16.0 | 36.6 | 41.4 | 195 | 116  | 28.7 | 63.5 | HA | 1096468         |                                 |
| † 3/4 - 20                       | 6-7                       | 1011857   | 3.63    | 2.27             | 86.0            | 54.0 | 36.6 | 108  | 29.5 | 16.0 | 36.6 | 41.4 | 195 | 121  | 28.7 | 63.5 | HA | 1096468         |                                 |
| †† 7/8-1 - 22-25                 | -                         | 1028177   | 6.75    | 4.40             | 112             | 53.8 | 31.8 | 154  | 35.8 | 22.4 | 51.0 | 59.2 | 243 | 145  | 38.1 | 76.2 | IA | 1096515         |                                 |

\*Deformation indicators. †Determine eye diameter "C" before ordering. ††22-25mm is cast steel.

## G-3315



- Forged carbon steel, Quenched & Tempered.
- Pressed steel latches and stainless steel springs, bolts and nuts.
- For replacement latch kit, order Stock No. 9900299.
- Hook body - galvanized.
- Do not attach slings or other devices in hook for overhead lifting.



### G-3315 Snap Hook



| Hook Size (mm) | Stock No. | Working Load Limit (t) | Weight Each (kg) | Dimensions (mm) |      |      |      |      |      |     |      |
|----------------|-----------|------------------------|------------------|-----------------|------|------|------|------|------|-----|------|
|                |           |                        |                  | A               | B    | C    | D    | E    | F    | L   | R    |
| 12             | 1023056   | .34                    | .11              | 6.35            | 19.1 | 19.1 | 11.2 | 57.0 | 19.1 | 100 | 82.5 |
| 14             | 1023074   | .45                    | .22              | 8.65            | 28.4 | 20.6 | 14.2 | 68.5 | 22.4 | 120 | 97.5 |

4:1 Design Factor.



### S-377

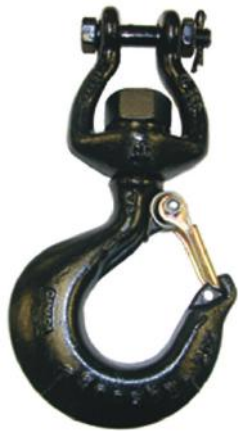
- Forged carbon steel, Quenched & Tempered.
- The resultant load on each hook cannot exceed 0.5t.
- Meets the performance requirements of Federal Specification RR-C-271G, Type V, Class 6, except for those provisions required of the contractor.



### S-377 Barrel Hooks

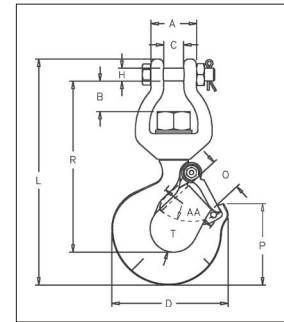
| Working Load Limit Per Pair (t) | Stock No. Per Pair | Weight Each Per Pair (kg) | Dimensions (mm) |             |                |              |
|---------------------------------|--------------------|---------------------------|-----------------|-------------|----------------|--------------|
|                                 |                    |                           | I.D. of Eye     | O.D. of Eye | Overall Length | Width of Lip |
| 1.0                             | 1028248            | 1.61                      | 39.6            | 71.4        | 127            | 73.2         |

4:1 Design Factor.



### S-3316

- Easily attaches to any chain and electric hoist with welded link load chain, roller chain or wire rope with suitable end fitting.
- Swivel jaw is forged.
- Suitable for positioning before lifting.



APPLICATION AND WARNING INFORMATION SECTION 17



### S-3316 Replacement Hook

| Working Load Limit (t) | Frame Code | Stock No. | Weight Each (kg) | Dimensions (mm) |      |      |      |      |     |      |      |     |      |      |         | Replacement Latch Kit Stock No. |
|------------------------|------------|-----------|------------------|-----------------|------|------|------|------|-----|------|------|-----|------|------|---------|---------------------------------|
|                        |            |           |                  | A               | B    | C    | D    | H    | L   | O    | P    | R   | T    | AA   |         |                                 |
| .5                     | F          | 1023029   | .57              | 33.5            | 17.8 | 14.2 | 80.0 | 9.7  | 159 | 24.4 | 56.4 | 120 | 25.1 | 50.8 | 1096374 |                                 |
| 1                      | H          | 1023047   | 1.18             | 33.5            | 25.4 | 17.0 | 101  | 11.2 | 197 | 29.5 | 70.6 | 150 | 29.5 | 50.8 | 1096468 |                                 |

5:1 Design Factor.



### A-378

- Forged alloy steel, Quenched & Tempered.
- Deep straight throat permits efficient handling of flat plates or large cylindrical shapes.



### A-378 with Handle

### A-378 Sorting Hook



| Working Load Limit at tip of Hook (t) | Working Load Limit at bottom of Hook (t) | Stock No | Style       | Weight Each (kg) | Dimensions (mm) |                |                        |                          |
|---------------------------------------|--|----------|-------------|------------------|-----------------|----------------|------------------------|--------------------------|
|                                       |  |          |             |                  | I.D. of Eye     | Overall Length | Opening at top of Hook | Radius at bottom of Hook |
| 1.8                                   | 6.8                                      | 1028024  | No Handle   | 2.91             | 35.0            | 246            | 71.4                   | 15.9                     |
| 1.8                                   | 6.8                                      | 1028033  | With Handle | 2.91             | 35.0            | 246            | 71.4                   | 15.9                     |

4:1 Design Factor.

## Crosby® Forged Swivels

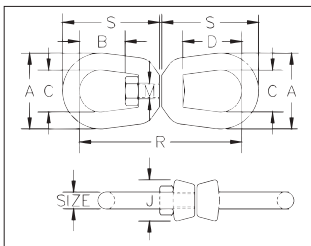
- 402 and 403 forged swivels are positioning devices and are not intended to rotate under load.
- Hot-dip galvanized.
- Quenched & Tempered.
- Crosby products meet or exceed all requirements of ASME B30.26 including identification, ductility, design factor, proof load and temperature requirements. Importantly, Crosby products meet other critical performance requirements, including fatigue life, impact properties and material traceability, not addressed by ASME B30.26.
- G-402 swivels meet the performance requirements of Federal Specification RR-C-271G, Type VII, Class 2, except for those provisions required of the contractor.
- G-403 swivels meet the performance requirements of Federal Specification RR-C-271G, Type VII, Class 3, except for those provisions required of the contractor.



13 - 32mm size



38mm size



### G-402 Regular Swivels

| Size (mm) | Stock No. | Working Load Limit (t) | Weight Each (kg) | Dimensions (mm) |      |      |      |      |      |      |      |
|-----------|-----------|------------------------|------------------|-----------------|------|------|------|------|------|------|------|
|           |           |                        |                  | A               | B    | C    | D    | J    | M    | R    | S    |
| 6         | 1016019   | .39                    | .10              | 31.8            | 17.5 | 19.1 | 26.9 | 17.5 | 7.85 | 74.6 | 42.9 |
| 8         | 1016037   | .57                    | .18              | 41.4            | 20.6 | 25.4 | 31.8 | 20.6 | 9.65 | 90.4 | 52.3 |
| 10        | 1016055   | 1.02                   | .32              | 51.0            | 23.9 | 31.8 | 38.1 | 25.4 | 12.7 | 109  | 63.5 |
| 13        | 1016073   | 1.63                   | .60              | 63.5            | 33.3 | 38.1 | 51.0 | 33.3 | 16.0 | 138  | 81.0 |
| 16        | 1016091   | 2.36                   | 1.13             | 76.0            | 39.5 | 44.5 | 60.5 | 38.1 | 19.1 | 167  | 98.5 |
| 19        | 1016117   | 3.27                   | 1.82             | 89.0            | 44.5 | 51.0 | 67.0 | 47.8 | 22.4 | 183  | 109  |
| 22        | 1016135   | 4.54                   | 2.83             | 102             | 52.0 | 57.0 | 77.5 | 54.0 | 25.4 | 213  | 127  |
| 25        | 1016153   | 5.67                   | 4.06             | 114             | 58.5 | 63.5 | 89.0 | 60.5 | 28.7 | 245  | 146  |
| 32        | 1016199   | 8.16                   | 7.42             | 143             | 68.5 | 79.5 | 93.5 | 76.0 | 38.1 | 291  | 172  |
| 38        | 1016215   | 20.5                   | 20.8             | 180             | 98.5 | 104  | 98.5 | 95.2 | 57.0 | 424  | 252  |

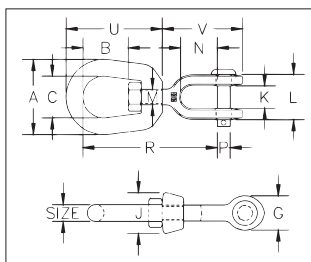
5:1 Design Factor.



### G-403 Jaw End Swivels

| Size (mm) | Stock No. | Working Load Limit (t) | Weight Each (kg) | Dimensions (mm) |      |      |      |      |      |      |      |      |      |      |      |      |
|-----------|-----------|------------------------|------------------|-----------------|------|------|------|------|------|------|------|------|------|------|------|------|
|           |           |                        |                  | A               | B    | C    | G    | J    | K    | L    | M    | N    | P    | R    | U    | V    |
| 6         | 1016395   | .39                    | .10              | 31.8            | 17.5 | 19.1 | 17.5 | 17.5 | 11.9 | 26.2 | 7.9  | 22.4 | 6.4  | 67.0 | 42.9 | 42.9 |
| 8         | 1016411   | .57                    | .15              | 41.4            | 20.6 | 25.4 | 20.6 | 20.6 | 12.7 | 28.7 | 9.7  | 22.4 | 7.9  | 74.5 | 52.0 | 46.0 |
| 10        | 1016439   | 1.02                   | .30              | 51.0            | 23.9 | 31.8 | 25.4 | 25.4 | 16.0 | 35.8 | 12.7 | 26.9 | 9.7  | 92.0 | 63.5 | 57.0 |
| 13        | 1016457   | 1.63                   | .61              | 63.5            | 33.3 | 38.1 | 33.3 | 33.3 | 19.1 | 44.5 | 16.0 | 33.3 | 12.7 | 114  | 81.0 | 73.0 |
| 16        | 1016475   | 2.36                   | 1.12             | 76.0            | 39.5 | 44.5 | 41.4 | 38.1 | 23.9 | 52.0 | 19.1 | 38.1 | 16.0 | 135  | 98.5 | 87.5 |
| 19        | 1016493   | 3.27                   | 1.76             | 89.0            | 44.5 | 51.0 | 47.8 | 47.8 | 28.7 | 64.5 | 22.4 | 44.5 | 19.1 | 154  | 109  | 102  |
| 22        | 1016518   | 4.54                   | 2.66             | 102             | 52.0 | 57.0 | 54.0 | 54.0 | 34.0 | 70.9 | 25.4 | 52.0 | 22.4 | 178  | 127  | 115  |
| 25        | 1016536   | 5.67                   | 4.46             | 114             | 58.5 | 63.5 | 67.0 | 60.5 | 44.5 | 94.5 | 28.7 | 71.5 | 28.7 | 217  | 146  | 151  |
| 32        | 1016572   | 8.16                   | 7.14             | 145             | 68.5 | 79.5 | 79.5 | 76.0 | 52.0 | 109  | 41.4 | 71.5 | 35.1 | 248  | 179  | 162  |
| 38+       | 1016590   | 20.5                   | 24.8             | 178             | 98.5 | 102  | 143  | 102  | 73.0 | 152  | 57.0 | 113  | 57.0 | 362  | 254  | 275  |

5:1 Design Factor.



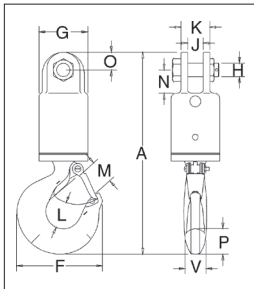


## Crosby® Tapered Roller Bearing Swivels

- Equipped with tapered roller thrust bearing.
- Suitable for frequent rotation under load.
- All swivels individually proof tested to 2 times the Working Load Limit with labeled documentation.
- All hooks furnished with latches assembled.
- All jaws complete with bolts, nuts, and cotter pins.
- Pressure lube fitting provided.
- NOT TO BE USED ON DEMOLITION (WRECKING) BALLS.
- Other types and capacities up to 1,250t available to meet your requirements. Visit [thecrosbygroup.com/engineeredolutions](http://thecrosbygroup.com/engineeredolutions) for more information.
- IMPORTANT - Crosby swivels should only be used with the recommended wire rope. Contact the wire rope manufacturer for the proper wire rope to be used with Crosby swivels.



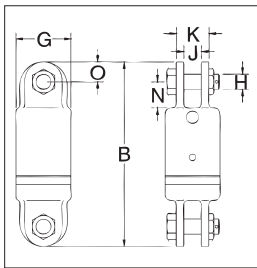
### S-1 Jaw & Hook



| Swivel No. | Stock No. | Working Load Limit (t) | Wire Rope Size (mm) | Weight Each (kg) | Dimensions (mm) |     |      |      |      |      |      |      |      |      |      |      |
|------------|-----------|------------------------|---------------------|------------------|-----------------|-----|------|------|------|------|------|------|------|------|------|------|
|            |           |                        |                     |                  | A               | F   | G    | H    | J    | K    | L    | M    | N    | O    | P    | V    |
| 3-S-1      | 297011    | 3                      | 13                  | 4.45             | 291             | 123 | 70.0 | 19.1 | 22.4 | 41.1 | 38.9 | 35.8 | 33.3 | 25.4 | 36.6 | 28.4 |
| 5-S-1      | 297217    | 5                      | 16                  | 7.04             | 339             | 160 | 76.0 | 22.4 | 25.4 | 57.0 | 49.3 | 42.9 | 41.1 | 28.4 | 46.0 | 36.6 |
| 8-S-1      | 297413    | 8.5                    | 19                  | 13.3             | 418             | 192 | 102  | 25.4 | 39.5 | 71.5 | 62.5 | 56.5 | 54.0 | 35.1 | 57.0 | 41.1 |
| 10-S-1     | 297618    | 10                     | 22                  | 21.2             | 502             | 212 | 114  | 38.1 | 44.5 | 86.0 | 66.0 | 61.0 | 89.0 | 44.5 | 66.0 | 49.3 |
| 15-S-1     | 297814    | 15                     | 26                  | 33.5             | 565             | 263 | 127  | 38.1 | 44.5 | 86.0 | 71.5 | 81.0 | 89.0 | 44.5 | 76.0 | 60.5 |
| 25-S-1     | 298118    | 25                     | -                   | 64               | 680             | 346 | 152  | 51.0 | 51.0 | 117  | 87.5 | 92.0 | 93.5 | 60.5 | 93.0 | 76.0 |
| 35-S-1     | 298216    | 35                     | -                   | 100              | 760             | 357 | 165  | 51.0 | 51.0 | 117  | 98.5 | 95.5 | 93.5 | 60.5 | 116  | 81.0 |
| 45-S-1     | 298314    | 45                     | -                   | 114              | 891             | 392 | 178  | 57.0 | 63.5 | 127  | 121  | 108  | 102  | 76.0 | 129  | 82.5 |

5:1 Design Factor. Individually Proof Tested to 2 times the Working Load Limit.

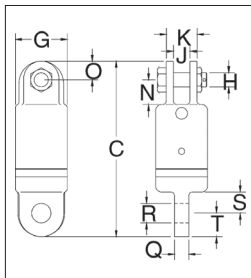
### S-2 Jaw & Jaw



| Swivel No. | Stock No. | Working Load Limit (t) | Wire Rope Size (mm) | Weight Each (kg) | Dimensions (mm) |      |      |      |      |      |      |
|------------|-----------|------------------------|---------------------|------------------|-----------------|------|------|------|------|------|------|
|            |           |                        |                     |                  | B               | G    | H    | J    | K    | N    | O    |
| 3-S-2      | 297020    | 3                      | 13                  | 4.37             | 236             | 70.0 | 19.1 | 22.4 | 41.1 | 33.3 | 25.4 |
| 5-S-2      | 297226    | 5                      | 16                  | 6.21             | 262             | 76.0 | 22.4 | 25.4 | 57.0 | 41.1 | 28.4 |
| 8-S-2      | 297422    | 8.5                    | 19                  | 11.9             | 321             | 102  | 25.4 | 39.5 | 71.5 | 54.0 | 35.1 |
| 10-S-2     | 297627    | 10                     | 22                  | 20.8             | 426             | 114  | 38.1 | 44.5 | 86.0 | 89.0 | 44.5 |
| 15-S-2     | 297823    | 15                     | 26                  | 28.5             | 435             | 127  | 38.1 | 44.5 | 86.0 | 89.0 | 44.5 |
| 25-S-2     | 298127    | 25                     | -                   | 64               | 527             | 152  | 51.0 | 51.0 | 117  | 93.5 | 60.5 |
| 35-S-2     | 298225    | 35                     | -                   | 70               | 527             | 165  | 51.0 | 51.0 | 117  | 93.5 | 60.5 |
| 45-S-2     | 298323    | 45                     | -                   | 107              | 641             | 178  | 57.0 | 63.5 | 127  | 102  | 76.0 |

5:1 Design Factor. Individually Proof Tested to 2 times the Working Load Limit.

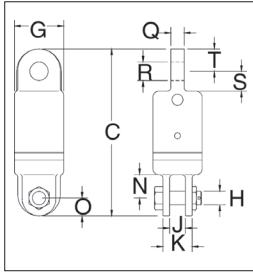
### S-3 Jaw & Eye



| Swivel No. | Stock No. | Working Load Limit (t) | Wire Rope Size (mm) | Weight Each (kg) | Dimensions (mm) |      |      |      |      |      |      |      |      |      |      |
|------------|-----------|------------------------|---------------------|------------------|-----------------|------|------|------|------|------|------|------|------|------|------|
|            |           |                        |                     |                  | C               | G    | H    | J    | K    | N    | O    | Q    | R    | S    | T    |
| 3-S-3      | 297039    | 3                      | 13                  | 4.14             | 237             | 70.0 | 19.1 | 22.4 | 41.1 | 33.3 | 25.4 | 19.1 | 26.2 | 28.4 | 31.8 |
| 5-S-3      | 297235    | 5                      | 16                  | 6.12             | 256             | 76.0 | 22.4 | 25.4 | 57.0 | 41.1 | 28.4 | 25.4 | 32.5 | 31.8 | 31.8 |
| 8-S-3      | 297431    | 8.5                    | 19                  | 11.3             | 311             | 102  | 25.4 | 39.5 | 71.5 | 54.0 | 35.1 | 31.8 | 35.8 | 41.1 | 38.1 |
| 10-S-3     | 297636    | 10                     | 22                  | 19.7             | 409             | 114  | 38.1 | 44.5 | 86.0 | 89.0 | 44.5 | 42.9 | 42.9 | 70.0 | 47.8 |
| 15-S-3     | 297832    | 15                     | 26                  | 27.7             | 425             | 127  | 38.1 | 44.5 | 86.0 | 89.0 | 44.5 | 49.3 | 51.5 | 70.0 | 54.0 |
| 25-S-3     | 298136    | 25                     | -                   | 61               | 546             | 152  | 51.0 | 51.0 | 117  | 93.5 | 60.5 | 57.0 | 58.5 | 98.5 | 60.5 |
| 35-S-3     | 298234    | 35                     | -                   | 68               | 546             | 165  | 51.0 | 51.0 | 117  | 93.5 | 60.5 | 57.0 | 58.5 | 98.5 | 60.5 |
| 45-S-3     | 298332    | 45                     | -                   | 102              | 657             | 178  | 57.0 | 63.5 | 127  | 102  | 76.0 | 63.5 | 64.5 | 102  | 76.0 |

5:1 Design Factor. Individually Proof Tested to 2 times the Working Load Limit.

## S-4 Eye & Jaw

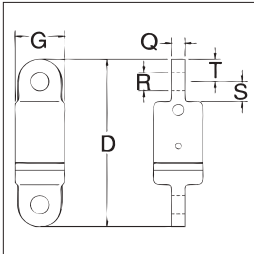


| Swivel No. | Stock No. | Working Load Limit (t) | Wire Rope Size (mm) | Weight Each (kg) | Dimensions (mm) |      |      |      |      |      |      |      |      |      |      |
|------------|-----------|------------------------|---------------------|------------------|-----------------|------|------|------|------|------|------|------|------|------|------|
|            |           |                        |                     |                  | C               | G    | H    | J    | K    | N    | O    | Q    | R    | S    | T    |
| 3-S-4      | 297048    | 3                      | 13                  | 4.08             | 237             | 70.0 | 19.1 | 22.4 | 41.1 | 33.3 | 25.4 | 19.1 | 26.2 | 28.4 | 31.8 |
| 5-S-4      | 297244    | 5                      | 16                  | 5.60             | 256             | 76.0 | 22.4 | 25.4 | 57.0 | 41.1 | 28.4 | 25.4 | 32.5 | 31.8 | 31.8 |
| 8-S-4      | 297440    | 8.5                    | 19                  | 13.2             | 311             | 102  | 25.4 | 39.5 | 71.5 | 54.0 | 35.1 | 31.8 | 35.8 | 41.1 | 38.1 |
| 10-S-4     | 297645    | 10                     | 22                  | 20.0             | 409             | 114  | 38.1 | 44.5 | 86.0 | 89.0 | 44.5 | 42.9 | 42.9 | 70.0 | 47.8 |
| 15-S-4     | 297841    | 15                     | 26                  | 27.7             | 425             | 127  | 38.1 | 44.5 | 86.0 | 89.0 | 44.5 | 49.3 | 51.5 | 70.0 | 54.0 |
| 25-S-4     | 298145    | 25                     | -                   | 61               | 546             | 152  | 51.0 | 51.0 | 117  | 93.5 | 60.5 | 57.0 | 58.5 | 98.5 | 60.5 |
| 35-S-4     | 298243    | 35                     | -                   | 68               | 546             | 165  | 51.0 | 51.0 | 117  | 93.5 | 60.5 | 57.0 | 58.5 | 98.5 | 60.5 |
| 45-S-4     | 298341    | 45                     | -                   | 102              | 657             | 178  | 57.0 | 63.5 | 127  | 102  | 76.0 | 63.5 | 64.5 | 102  | 76.0 |

5:1 Design Factor. Individually Proof Tested to 2 times the Working Load Limit.

4

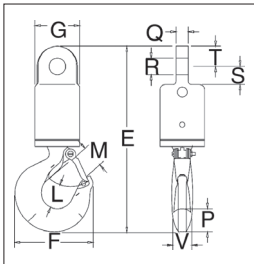
## S-5 Eye & Eye



| Swivel No. | Stock No. | Working Load Limit (t) | Wire Rope Size (mm) | Weight Each (kg) | Dimensions (mm) |      |      |      |      |      |
|------------|-----------|------------------------|---------------------|------------------|-----------------|------|------|------|------|------|
|            |           |                        |                     |                  | D               | G    | Q    | R    | S    | T    |
| 3-S-5      | 297057    | 3                      | 13                  | 3.86             | 239             | 70.0 | 19.1 | 26.2 | 28.4 | 31.8 |
| 5-S-5      | 297253    | 5                      | 16                  | 5.13             | 249             | 76.0 | 25.4 | 32.5 | 31.8 | 31.8 |
| 8-S-5      | 297459    | 8.5                    | 19                  | 13.3             | 302             | 102  | 31.8 | 35.8 | 41.1 | 38.1 |
| 10-S-5     | 297654    | 10                     | 22                  | 19.1             | 394             | 114  | 42.9 | 42.9 | 70.0 | 47.8 |
| 15-S-5     | 297850    | 15                     | 26                  | 22.2             | 416             | 127  | 49.3 | 51.5 | 70.0 | 54.0 |
| 25-S-5     | 298154    | 25                     | -                   | 59               | 565             | 152  | 57.0 | 58.5 | 98.5 | 60.5 |
| 35-S-5     | 298252    | 35                     | -                   | 66               | 565             | 165  | 57.0 | 58.5 | 98.5 | 60.5 |
| 45-S-5     | 298350    | 45                     | -                   | 98               | 673             | 178  | 63.5 | 64.5 | 102  | 76.0 |

5:1 Design Factor. Individually Proof Tested to 2 times the Working Load Limit.

## S-6 Eye & Hook



| Swivel No. | Stock No. | Working Load Limit (t) | Wire Rope Size (mm) | Weight Each (kg) | Dimensions (mm) |     |      |      |      |      |      |      |      |      |      |
|------------|-----------|------------------------|---------------------|------------------|-----------------|-----|------|------|------|------|------|------|------|------|------|
|            |           |                        |                     |                  | E               | F   | G    | L    | M    | P    | Q    | R    | S    | T    | V    |
| 3-S-6      | 297066    | 3                      | 13                  | 4.23             | 292             | 123 | 70.0 | 38.9 | 35.8 | 36.6 | 19.1 | 26.2 | 28.4 | 31.8 | 28.4 |
| 5-S-6      | 297262    | 5                      | 16                  | 6.46             | 332             | 160 | 76.0 | 49.3 | 42.9 | 46.0 | 25.4 | 32.5 | 31.8 | 31.8 | 36.6 |
| 8-S-6      | 297468    | 8.5                    | 19                  | 14.5             | 408             | 192 | 102  | 62.5 | 56.5 | 57.0 | 31.8 | 35.8 | 41.1 | 38.1 | 41.1 |
| 10-S-6     | 297663    | 10                     | 22                  | 20.6             | 486             | 212 | 114  | 66.0 | 61.0 | 66.0 | 42.9 | 42.9 | 70.0 | 47.8 | 49.3 |
| 15-S-6     | 297869    | 15                     | 26                  | 28.6             | 540             | 263 | 127  | 71.5 | 81.0 | 76.0 | 49.3 | 51.5 | 70.0 | 54.0 | 60.5 |
| 25-S-6     | 298163    | 25                     | -                   | 61               | 699             | 346 | 152  | 87.5 | 92.0 | 93.0 | 57.0 | 58.5 | 98.5 | 60.5 | 76.0 |
| 35-S-6     | 298261    | 35                     | -                   | 98               | 780             | 357 | 165  | 98.5 | 95.5 | 116  | 57.0 | 58.5 | 98.5 | 60.5 | 81.0 |
| 45-S-6     | 298369    | 45                     | -                   | 122              | 907             | 392 | 178  | 121  | 108  | 129  | 63.5 | 64.5 | 102  | 76.0 | 82.5 |

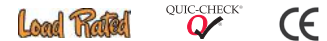
5:1 Design Factor. Individually Proof Tested to 2 times the Working Load Limit.



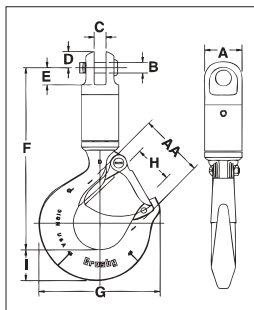
## Crosby® Angular Contact Bearing Swivels



- Designed for high rotation speed, lower torque required to initiate rotation.
- Angular contact bearings maximize efficiency, reliability, and service life of swivel and extend the life of the wire rope.
- Entire swivel is zinc plated to resist corrosion.
- Individually Proof Tested to 2 times the Working Load Limit with certification.
- Hook models utilize genuine Crosby hooks which are forged alloy steel, quenched and tempered, and contain patented QUIC-CHECK® markings.
- Each swivel 7.65 metric tons and larger is furnished with a pressure lubrication fitting.
- For swivels larger than those listed, visit [thecrosbygroup.com/engineeredolutions](http://thecrosbygroup.com/engineeredolutions) for more information.



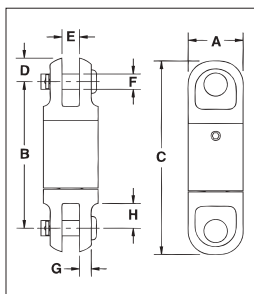
### AS-1 Jaw & Hook



| AS-1 JAW & HOOK        |                     |           |                  | Dimensions (mm) |      |      |      |      |     |      |      |      |      | Deformation Indicator AA | Replacement Latch Kit Stock No. |
|------------------------|---------------------|-----------|------------------|-----------------|------|------|------|------|-----|------|------|------|------|--------------------------|---------------------------------|
| Working Load Limit (t) | Wire Rope Size (mm) | Stock No. | Weight Each (kg) | A               | B    | C    | D    | E    | F   | G    | H    | I    |      |                          |                                 |
| .40                    | 3                   | 1016001   | .32              | 22.4            | 6.35 | 6.35 | 9.65 | 10.4 | 110 | 72.5 | 23.6 | 18.5 | 38.1 | 1096325                  |                                 |
| .68                    | 6                   | 1016010   | .68              | 33.3            | 9.65 | 7.85 | 11.2 | 14.2 | 138 | 80.0 | 24.6 | 21.3 | 38.1 | 1096374                  |                                 |
| 1.35                   | 10                  | 1016025   | 1.04             | 41.4            | 12.7 | 12.7 | 17.5 | 19.8 | 161 | 102  | 29.5 | 29.0 | 38.1 | 1096374                  |                                 |
| 2.70                   | 13                  | 1016026   | 2.95             | 51.0            | 19.1 | 19.1 | 23.9 | 30.2 | 221 | 123  | 35.8 | 36.6 | 63.5 | 1096374                  |                                 |
| 4.50                   | 16                  | 1016040   | 5.85             | 63.5            | 22.4 | 25.4 | 28.7 | 38.9 | 272 | 160  | 42.9 | 46.2 | 76.0 | 1096562                  |                                 |
| 7.65                   | 19                  | 1016045   | 12.0             | 76.0            | 30.2 | 39.5 | 34.0 | 53.0 | 347 | 212  | 61.0 | 66.0 | 102  | 1096657                  |                                 |
| 9.00                   | 22                  | 1016056   | 24.0             | 102             | 38.1 | 44.5 | 44.5 | 89.0 | 456 | 263  | 81.0 | 76.0 | 127  | 1096704                  |                                 |
| 13.5                   | 25                  | 1016064   | 24.0             | 102             | 38.1 | 44.5 | 44.5 | 89.0 | 456 | 263  | 81.0 | 76.0 | 127  | 1096704                  |                                 |
| 22.5                   | 32                  | 1016075   | 44.0             | 127             | 51.0 | 51.0 | 60.5 | 93.5 | 530 | 346  | 82.5 | 92.0 | 165  | 1090161                  |                                 |
| 31.5                   | 38                  | 1016082   | 63.5             | 127             | 51.0 | 51.0 | 60.5 | 93.5 | 610 | 357  | 76.0 | 116  | 178  | 1090189                  |                                 |

5:1 Design Factor. Individually Proof Tested to 2 times the Working Load Limit.

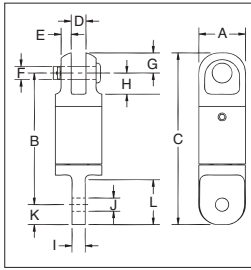
### AS-2 Jaw & Jaw



| AS-2 JAW & JAW         |                     |           |                  | Dimensions (mm) |      |      |      |      |      |      |      |
|------------------------|---------------------|-----------|------------------|-----------------|------|------|------|------|------|------|------|
| Working Load Limit (t) | Wire Rope Size (mm) | Stock No. | Weight Each (kg) | A               | B    | C    | D    | E    | F    | G    | H    |
| .40                    | 3                   | 1016103   | .18              | 22.4            | 60.5 | 79.5 | 9.65 | 6.35 | 6.35 | 4.80 | 10.4 |
| .68                    | 6                   | 1016114   | .41              | 33.3            | 90.0 | 113  | 11.2 | 7.85 | 9.65 | 5.60 | 14.2 |
| 1.35                   | 10                  | 1016122   | .91              | 41.4            | 103  | 138  | 17.5 | 12.7 | 12.7 | 7.10 | 19.8 |
| 2.70                   | 13                  | 1016131   | 2.22             | 51.0            | 159  | 207  | 23.9 | 19.1 | 19.1 | 9.65 | 30.2 |
| 4.50                   | 16                  | 1016139   | 4.35             | 63.5            | 197  | 270  | 28.7 | 25.4 | 22.4 | 13.5 | 38.9 |
| 7.65                   | 19                  | 1016148   | 7.17             | 76.0            | 245  | 313  | 34.0 | 39.5 | 30.2 | 14.2 | 53.0 |
| 9.00                   | 22                  | 1016157   | 18.1             | 102             | 356  | 445  | 44.5 | 44.5 | 38.1 | 20.6 | 89.0 |
| 13.5                   | 25                  | 1016166   | 18.1             | 102             | 356  | 445  | 44.5 | 44.5 | 38.1 | 20.6 | 89.0 |
| 22.5                   | 32                  | 1016175   | 35.4             | 127             | 405  | 526  | 60.5 | 51.0 | 51.0 | 28.7 | 93.5 |
| 31.5                   | 38                  | 1016184   | 35.4             | 127             | 405  | 526  | 60.5 | 51.0 | 51.0 | 28.7 | 93.5 |

5:1 Design Factor. Individually Proof Tested to 2 times the Working Load Limit.

## AS-3 Jaw & Eye

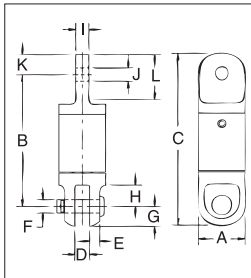


| AS-3 JAW & EYE         |                     |           |                  | Dimensions (mm) |      |      |      |      |      |      |      |      |      |      |      |
|------------------------|---------------------|-----------|------------------|-----------------|------|------|------|------|------|------|------|------|------|------|------|
| Working Load Limit (t) | Wire Rope Size (mm) | Stock No. | Weight Each (kg) | A               | B    | C    | D    | E    | F    | G    | H    | I    | J    | K    | L    |
| .40                    | 3                   | 1016205   | .14              | 22.4            | 63.5 | 82.5 | 6.35 | 4.80 | 6.35 | 9.65 | 10.4 | 6.35 | 6.35 | 9.65 | 21.3 |
| .68                    | 6                   | 1016216   | .41              | 33.3            | 93.5 | 116  | 7.85 | 5.60 | 9.65 | 11.2 | 14.2 | 7.85 | 9.65 | 11.0 | 22.4 |
| 1.35                   | 10                  | 1016224   | .86              | 41.4            | 106  | 138  | 12.7 | 7.10 | 12.7 | 17.5 | 19.8 | 12.7 | 16.8 | 16.0 | 35.1 |
| 2.70                   | 13                  | 1016232   | 2.09             | 51.0            | 157  | 207  | 19.1 | 9.65 | 19.1 | 23.9 | 30.2 | 19.1 | 23.1 | 25.0 | 51.0 |
| 4.50                   | 16                  | 1016243   | 4.13             | 63.5            | 200  | 259  | 25.4 | 13.5 | 22.4 | 28.7 | 38.1 | 25.4 | 31.8 | 30.0 | 67.0 |
| 7.65                   | 19                  | 1016250   | 7.08             | 76.0            | 241  | 311  | 39.5 | 14.2 | 31.8 | 34.0 | 53.0 | 31.8 | 35.8 | 38.0 | 79.5 |
| 9.00                   | 22                  | 1016259   | 17.7             | 102             | 349  | 440  | 44.5 | 20.6 | 38.1 | 44.5 | 89.0 | 43.7 | 41.4 | 46.0 | 119  |
| 13.5                   | 25                  | 1016268   | 18.1             | 102             | 341  | 440  | 44.5 | 20.6 | 38.1 | 44.5 | 89.0 | 51.0 | 51.0 | 54.0 | 119  |
| 22.5                   | 32                  | 1016277   | 35.4             | 127             | 406  | 527  | 51.0 | 28.7 | 51.0 | 60.5 | 93.5 | 57.0 | 58.5 | 61.0 | 133  |
| 31.5                   | 38                  | 1016286   | 35.4             | 127             | 406  | 527  | 51.0 | 28.7 | 51.0 | 60.5 | 93.5 | 57.0 | 58.5 | 61.0 | 133  |

5:1 Design Factor. Individually Proof Tested to 2 times the Working Load Limit.

4

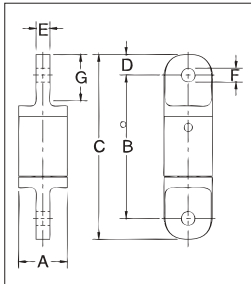
## AS-4 Eye & Jaw



| AS-4 EYE & JAW         |                     |           |                  | Dimensions (mm) |      |      |      |      |      |      |      |      |      |      |      |
|------------------------|---------------------|-----------|------------------|-----------------|------|------|------|------|------|------|------|------|------|------|------|
| Working Load Limit (t) | Wire Rope Size (mm) | Stock No. | Weight Each (kg) | A               | B    | C    | D    | E    | F    | G    | H    | I    | J    | K    | L    |
| .40                    | 3                   | 1016306   | .14              | 22.4            | 63.5 | 82.5 | 6.35 | 4.80 | 6.35 | 9.65 | 10.4 | 6.35 | 6.35 | 9.65 | 20.6 |
| .68                    | 6                   | 1016314   | .41              | 33.3            | 92.0 | 116  | 7.85 | 5.60 | 9.65 | 11.2 | 14.2 | 7.85 | 9.65 | 11.0 | 22.4 |
| 1.35                   | 10                  | 1016325   | .86              | 41.4            | 106  | 140  | 12.7 | 7.10 | 12.7 | 17.5 | 19.8 | 12.7 | 16.8 | 16.0 | 34.0 |
| 2.70                   | 13                  | 1016332   | 2.09             | 51.0            | 157  | 207  | 19.1 | 9.65 | 19.1 | 23.9 | 30.2 | 19.1 | 23.1 | 25.4 | 51.0 |
| 4.50                   | 16                  | 1016343   | 4.13             | 63.5            | 200  | 259  | 25.4 | 13.5 | 22.4 | 28.7 | 36.6 | 25.4 | 31.8 | 30.2 | 67.0 |
| 7.65                   | 19                  | 1016352   | 7.12             | 76.0            | 240  | 311  | 39.5 | 14.2 | 30.2 | 34.0 | 53.0 | 31.8 | 35.8 | 38.1 | 79.5 |
| 9.00                   | 22                  | 1016361   | 17.7             | 102             | 359  | 451  | 44.5 | 20.6 | 38.1 | 44.5 | 89.0 | 43.7 | 42.2 | 46.0 | 119  |
| 13.5                   | 25                  | 1016370   | 18.1             | 102             | 351  | 451  | 44.5 | 20.6 | 38.1 | 44.5 | 89.0 | 51.0 | 51.5 | 54.0 | 119  |
| 22.5                   | 32                  | 1016375   | 34.0             | 127             | 405  | 527  | 51.0 | 28.7 | 51.0 | 60.5 | 93.5 | 57.0 | 58.5 | 60.5 | 133  |
| 31.5                   | 38                  | 1016379   | 34.0             | 127             | 405  | 527  | 51.0 | 28.7 | 51.0 | 60.5 | 93.5 | 57.0 | 58.5 | 60.5 | 133  |

5:1 Design Factor. Individually Proof Tested to 2 times the Working Load Limit.

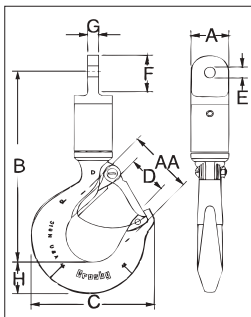
## AS-5 Eye & Eye



| AS-5 EYE & EYE         |                     |           |                  | Dimensions (mm) |      |      |      |      |      |      |
|------------------------|---------------------|-----------|------------------|-----------------|------|------|------|------|------|------|
| Working Load Limit (t) | Wire Rope Size (mm) | Stock No. | Weight Each (kg) | A               | B    | C    | D    | E    | F    | G    |
| .40                    | 3                   | 1016409   | .14              | 22.4            | 67.0 | 86.0 | 9.65 | 6.35 | 6.35 | 20.6 |
| .68                    | 6                   | 1016418   | .41              | 33.3            | 95.0 | 118  | 11.2 | 7.85 | 9.65 | 22.4 |
| 1.35                   | 10                  | 1016427   | .82              | 41.4            | 110  | 141  | 16.0 | 12.7 | 16.8 | 34.0 |
| 2.70                   | 13                  | 1016436   | 1.95             | 51.0            | 156  | 207  | 25.4 | 19.1 | 23.1 | 51.0 |
| 4.50                   | 16                  | 1016445   | 3.90             | 63.5            | 197  | 270  | 30.2 | 25.4 | 31.8 | 67.0 |
| 7.65                   | 19                  | 1016454   | 7.00             | 76.0            | 237  | 313  | 38.1 | 31.8 | 35.8 | 79.5 |
| 9.00                   | 22                  | 1016463   | 16.8             | 102             | 353  | 445  | 46.0 | 43.7 | 41.4 | 119  |
| 13.5                   | 25                  | 1016472   | 17.7             | 102             | 337  | 445  | 54.0 | 51.0 | 54.0 | 119  |
| 22.5                   | 32                  | 1016481   | 32.7             | 127             | 406  | 527  | 60.5 | 57.0 | 58.5 | 133  |
| 31.5                   | 38                  | 1016490   | 32.7             | 127             | 406  | 527  | 60.5 | 57.0 | 58.5 | 133  |

5:1 Design Factor. Individually Proof Tested to 2 times the Working Load Limit.

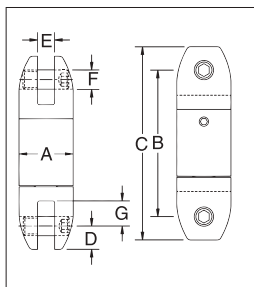
## AS-6 Eye & Hook



| AS-6 EYE & HOOK        |                     |           |                  | Dimensions (mm) |     |      |      |      |      |      |      | Deformation Indicator AA | Replacement Latch Kit Stock No. |
|------------------------|---------------------|-----------|------------------|-----------------|-----|------|------|------|------|------|------|--------------------------|---------------------------------|
| Working Load Limit (t) | Wire Rope Size (mm) | Stock No. | Weight Each (kg) | A               | B   | C    | D    | E    | F    | G    | H    |                          |                                 |
| .40                    | 3                   | 1016502   | .32              | 22.4            | 111 | 72.5 | 23.6 | 6.35 | 20.6 | 6.35 | 18.5 | 38.1                     | 1096325                         |
| .68                    | 6                   | 1016513   | .68              | 33.3            | 141 | 80.0 | 24.6 | 9.65 | 22.4 | 7.85 | 21.3 | 38.1                     | 1096374                         |
| 1.35                   | 10                  | 1016520   | 1.32             | 41.4            | 158 | 102  | 29.5 | 16.8 | 34.0 | 12.7 | 29.0 | 51.0                     | 1096374                         |
| 2.70                   | 13                  | 1016529   | 2.81             | 51.0            | 219 | 123  | 35.8 | 23.1 | 51.0 | 19.1 | 36.6 | 63.5                     | 1096374                         |
| 4.50                   | 16                  | 1016538   | 5.62             | 63.5            | 274 | 160  | 42.9 | 31.8 | 67.0 | 25.4 | 46.2 | 76.0                     | 1096562                         |
| 7.65                   | 19                  | 1016547   | 10.7             | 76.0            | 343 | 212  | 61.0 | 35.6 | 79.5 | 31.8 | 66.0 | 102                      | 1096657                         |
| 9.00                   | 22                  | 1016556   | 23.6             | 102             | 459 | 263  | 81.0 | 42.2 | 119  | 43.7 | 76.0 | 127                      | 1096704                         |
| 13.5                   | 25                  | 1016565   | 24.0             | 102             | 448 | 263  | 81.0 | 51.5 | 119  | 51.0 | 76.0 | 127                      | 1096704                         |
| 22.5                   | 32                  | 1016574   | 42.6             | 127             | 530 | 346  | 82.5 | 59.0 | 133  | 57.0 | 92.0 | 165                      | 1090161                         |
| 31.5                   | 38                  | 1016583   | 62.6             | 127             | 610 | 357  | 76.0 | 59.0 | 133  | 57.0 | 116  | 178                      | 1090189                         |

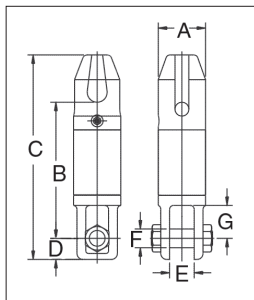
5:1 Design Factor. Individually Proof Tested to 2 times the Working Load Limit.

### AS-7 Bullet Style Jaw & Jaw



| AS-7<br>BULLET STYLE JAW & JAW |                     |           |                  | Dimensions (mm) |      |      |      |      |      |      |
|--------------------------------|---------------------|-----------|------------------|-----------------|------|------|------|------|------|------|
| Working Load Limit (t)         | Wire Rope Size (mm) | Stock No. | Weight Each (kg) | A               | B    | C    | D    | E    | F    | G    |
| .40                            | 3                   | 1016604   | .18              | 22.4            | 60.5 | 79.5 | 9.65 | 6.35 | 7.85 | 10.2 |
| .68                            | 6                   | 1016611   | .50              | 33.3            | 90.0 | 113  | 11.2 | 7.85 | 9.65 | 14.2 |
| 1.35                           | 10                  | 1016622   | .82              | 41.4            | 103  | 132  | 14.2 | 12.7 | 11.2 | 20.6 |
| 2.70                           | 13                  | 1016631   | 1.72             | 51.0            | 138  | 179  | 20.6 | 19.1 | 16.0 | 23.9 |
| 4.50                           | 16                  | 1016640   | 3.63             | 63.5            | 197  | 256  | 28.7 | 25.4 | 22.4 | 39.5 |
| 7.65                           | 19                  | 1016649   | 6.58             | 76.0            | 251  | 314  | 31.8 | 33.3 | 25.4 | 54.0 |
| 9.00                           | 22                  | 1016652   | 18.1             | 102             | 334  | 425  | 44.5 | 44.5 | 38.1 | 82.5 |
| 13.5                           | 25                  | 1016658   | 18.1             | 102             | 334  | 425  | 44.5 | 44.5 | 38.1 | 82.5 |
| 22.5                           | 32                  | 1016662   | 38.1             | 127             | 405  | 527  | 60.5 | 51.0 | 51.0 | 93.5 |
| 31.5                           | 38                  | 1016667   | 38.1             | 127             | 405  | 527  | 60.5 | 51.0 | 51.0 | 93.5 |

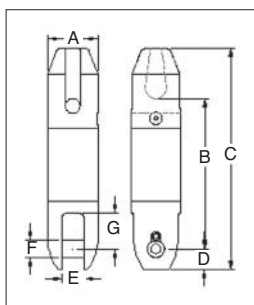
5:1 Design Factor. Individually Proof Tested to 2 times the Working Load Limit.



### AS-11 Thimble & Jaw

| AS-11<br>THIMBLE & JAW |                     |           |                  | Dimensions (mm) |      |     |      |      |      |      |
|------------------------|---------------------|-----------|------------------|-----------------|------|-----|------|------|------|------|
| Working Load Limit (t) | Wire Rope Size (mm) | Stock No. | Weight Each (kg) | A               | B    | C   | D    | E    | F    | G    |
| 7.65                   | 19                  | 1017020   | 12.0             | 76.2            | 22.0 | 330 | 34.0 | 39.6 | 30.2 | 53.1 |
| 13.5                   | 25                  | 1017029   | 24.0             | 102             | 296  | 445 | 44.5 | 45.0 | 38.1 | 89.0 |

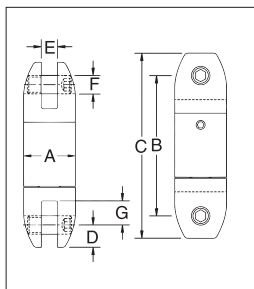
5:1 Design Factor. Individually Proof Tested to 2 times the Working Load Limit.



### AS-14 Thimble & Bullet

| AS-14<br>THIMBLE & BULLET |                     |           |                  | Dimensions (mm) |     |     |      |      |      |      |
|---------------------------|---------------------|-----------|------------------|-----------------|-----|-----|------|------|------|------|
| Working Load Limit (t)    | Wire Rope Size (mm) | Stock No. | Weight Each (kg) | A               | B   | C   | D    | E    | F    | G    |
| 7.7                       | 20                  | 1017255   | 9.0              | 76.2            | 229 | 337 | 31.8 | 33.3 | 25.4 | 54.1 |
| 13.6                      | 26                  | 1017258   | 18.0             | 102             | 292 | 441 | 44.5 | 44.5 | 38.1 | 82.6 |
| 22.7                      | 32                  | 1017261   | 37.0             | 127             | 363 | 538 | 60.5 | 50.8 | 50.8 | 93.7 |

5:1 Design Factor. Individually Proof Tested to 2 times the Working Load Limit.



### AS-17 Bullet Style Jaw & Jaw Slurry Swivel

| AS-17<br>BULLET JAW & SLURRY SWIVEL |                     |           |                  | Dimensions (mm) |     |     |      |      |      |      |
|-------------------------------------|---------------------|-----------|------------------|-----------------|-----|-----|------|------|------|------|
| Working Load Limit (t)              | Wire Rope Size (mm) | Stock No. | Weight Each (kg) | A               | B   | C   | D    | E    | F    | G    |
| 7.65                                | 19                  | 8013342   | 6.57             | 76.2            | 257 | 321 | 31.8 | 33.3 | 25.4 | 54.1 |
| 13.5                                | 25                  | 8013343   | 18.1             | 102             | 343 | 432 | 44.5 | 44.5 | 38.1 | 82.5 |
| 22.5                                | 32                  | 8013376   | 38.1             | 127             | 410 | 531 | 60.5 | 51.0 | 51.0 | 93.7 |
| 31.5                                | 38                  | 8013344   | 38.1             | 127             | 410 | 531 | 60.5 | 51.0 | 51.0 | 93.7 |
| 40.5                                | -                   | 2016585   | 68.0             | 152             | 514 | 666 | 76.2 | 64.3 | 57.2 | 69.9 |

5:1 Design Factor. Individually Proof Tested to 2 times the Working Load Limit.

## BK Safety Hook The Original

In 1965, the innovative Gunnebo Industries BK Safety Hook increased job site safety in the construction industry. Today the BK Safety Hook is the foundation of the renowned BK product family.



Watch a BK Safety Hook with Double Latch BKD demo at [thecrosbygroup.com/BKBKDdemo](https://www.thecrosbygroup.com/BKBKDdemo)



### Clear markings

- Country of origin.
- Traceability codes.
- Model, size, and grade.

### Increased flexibility

- The eye design enables connection to not only G-links, but also C-links and Berglok.
- The design makes the BK hook suitable for steel wire ropes.

### Flat section

- For attachment to other GrabiQ or wire components.

### Heavy duty rivet

- Recessed rivet for a slim design.
- Decreases the risk of snagging.
- Ideal in narrow spaces.

### Latch rotation stop

- Protects the trigger mechanism from damage.

### Quality is top priority

- Fatigue tested.
- Forged alloy steel.
- Hardened and tempered.
- Every hook is individually proof-loaded at 2.5 x WLL.
- Full traceability back to the raw material.

### Replaceable trigger set

- Quick and easy assembly.
- Available as a complete spare part kit.

### Precision manufacturing

- Perfect fit between the parts.
- Increases safety during operation.

### Recessed trigger

- To avoid the trigger from snagging or being damaged, it has been recessed into the body of the hook.
- Helps to prevent the latch from accidentally opening.

### Fluorescent color

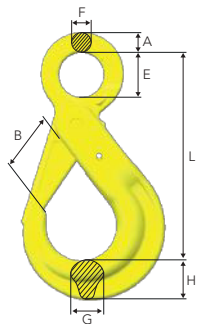
- For high visibility in the field.





## Safety Hook BK

The "original" safety hook with eye connector.



| Stock No. | Code        | WLL (t) | Dimensions (mm) |     |     |    |    |    |    | Weight (kg) |
|-----------|-------------|---------|-----------------|-----|-----|----|----|----|----|-------------|
|           |             |         | A               | L   | B   | E  | F  | G  | H  |             |
| Z101108   | BK-6-10     | 1.5     | 12              | 109 | 29  | 22 | 10 | 15 | 21 | 0.5         |
| Z101097   | BK-7/8-10   | 2.6     | 14              | 138 | 37  | 28 | 11 | 17 | 26 | 0.9         |
| Z101024   | BK-10-10    | 4.0     | 16              | 168 | 45  | 34 | 13 | 21 | 31 | 1.5         |
| Z101032   | BK-13-10    | 6.8     | 20              | 207 | 55  | 44 | 16 | 30 | 40 | 3.0         |
| Z101040   | BK-16-10    | 10.3    | 26              | 254 | 62  | 56 | 20 | 37 | 50 | 5.5         |
| Z101089   | BK-18/20-10 | 16.0    | 30              | 289 | 68  | 60 | 22 | 44 | 64 | 9.0         |
| Z101325   | BK-22-10    | 20.0    | 32              | 320 | 80  | 70 | 24 | 50 | 64 | 11.3        |
| Z101326   | BK-26-10    | 27.3    | 35              | 342 | 100 | 80 | 25 | 54 | 68 | 16.5        |

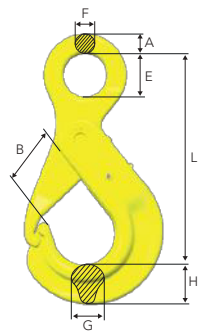
Fulfills requirements in: EN 1677:2008 (WLL +25%), ASTM A952/A952M.

For larger sizes, see Classic Grade 8.

4:1 Design Factor

## Safety Hook OBK

Safety hook with eye connector and grip latch.



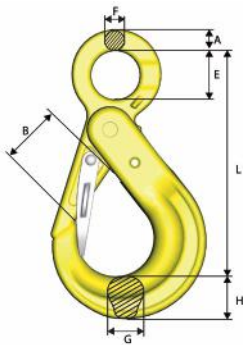
| Stock No. | Code         | WLL (t) | Dimensions (mm) |     |    |    |    |    |    | Weight (kg) |
|-----------|--------------|---------|-----------------|-----|----|----|----|----|----|-------------|
|           |              |         | A               | L   | B  | E  | F  | G  | H  |             |
| Z101048   | OBK-6-10     | 1.5     | 12              | 103 | 26 | 22 | 9  | 15 | 17 | 0.4         |
| Z101143   | OBK-7/8-10   | 2.6     | 14              | 139 | 37 | 28 | 10 | 20 | 22 | 0.8         |
| Z101145   | OBK-10-10    | 4.0     | 16              | 170 | 47 | 34 | 13 | 22 | 29 | 1.3         |
| Z101147   | OBK-13-10    | 6.8     | 21              | 206 | 53 | 44 | 15 | 29 | 38 | 2.6         |
| Z101141   | OBK-16-10    | 10.3    | 26              | 251 | 68 | 56 | 19 | 29 | 45 | 4.4         |
| Z101240   | OBK-18/20-10 | 16.0    | 28              | 293 | 74 | 60 | 22 | 44 | 56 | 8.3         |

For larger sizes see Classic Grade 8(OBK-22-8). Fulfills requirements in: EN 1677:2008 (WLL +25%), ASTM A952/A952M.

4:1 Design Factor. For larger sizes see Classic Grade 8 (OBK-22-8).

## Safety Hook BKD

Double latch BK-hook with recessed trigger. Should the first hook latch accidentally open, either through direct impact or excessive wear on the trigger, the extra latch is there to retain the load safely. The secondary latch is designed to be easily operated and will not cause inconvenience for the operator.



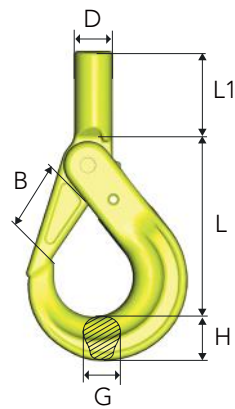
| Stock No. | Code         | WLL (t) | Dimensions (mm) |     |    |    |    |    |    | Weight (kg) |
|-----------|--------------|---------|-----------------|-----|----|----|----|----|----|-------------|
|           |              |         | A               | L   | B  | E  | F  | G  | H  |             |
| Z101154   | BKD-13-10    | 6.8     | 20              | 207 | 44 | 44 | 16 | 30 | 40 | 3.2         |
| Z101155   | BKD-16-10    | 10.3    | 26              | 254 | 48 | 56 | 20 | 37 | 50 | 5.8         |
| Z101156   | BKD-18/20-10 | 16.0    | 30              | 289 | 52 | 60 | 22 | 46 | 62 | 9.1         |
| Z101373   | BKD-26-10    | 27.3    | 35              | 342 | 72 | 80 | 25 | 54 | 68 | 16.8        |

Fulfills requirements in: EN 1677:2008 (WLL +25%), ASTM A952/A952M.

4:1 Design Factor

## Shank Safety Hook BKT

Safety hook with shank ready for customized machines.



| Stock No. | Code       | WLL (t) | Dimensions (mm) |    |    |    |       |    |    | Weight (kg) |
|-----------|------------|---------|-----------------|----|----|----|-------|----|----|-------------|
|           |            |         | L               | B  | L1 | D  | d min | G  | H  |             |
| Z1011120  | BKT-6-10   | 1.5     | 90              | 29 | 36 | 20 | 11    | 15 | 21 | 0.5         |
| Z1011020  | BKT-7/8-10 | 2.6     | 111             | 37 | 47 | 24 | 13    | 17 | 26 | 0.9         |
| Z1010690  | BKT-10-10  | 4.0     | 133             | 45 | 51 | 29 | 16    | 21 | 31 | 1.6         |
| Z1010710  | BKT-13-10  | 6.8     | 160             | 55 | 77 | 34 | 20    | 30 | 39 | 3.0         |

Fulfills requirements in: EN 1677:2008 (WLL +25%), ASTM A952/A952M.

d min = the smallest permitted shank dimension after machining.

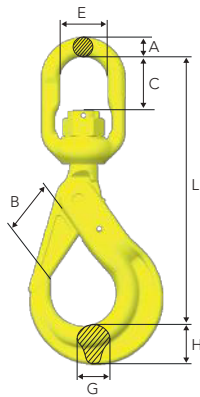
Note! After machining of the shank, proof loading must be carried out.

4:1 Design Factor



## Swivel Safety Hook BKL

Safety hook with swivel for improved positioning of the hook before the load is lifted (360° rotation).

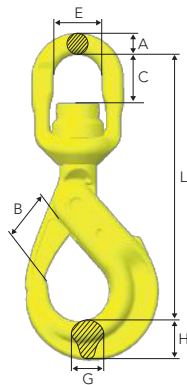


| Stock No. | Code         | WLL (t) | Dimensions (mm) |    |    |    |    |    |    | Weight (kg) |
|-----------|--------------|---------|-----------------|----|----|----|----|----|----|-------------|
|           |              |         | L               | B  | C  | E  | A  | G  | H  |             |
| Z101114   | BKL-6-10     | 1.5     | 149             | 29 | 23 | 33 | 11 | 15 | 21 | 0.7         |
| Z101104   | BKL-7/8-10   | 2.6     | 183             | 37 | 27 | 38 | 12 | 17 | 26 | 1.2         |
| Z101028   | BKL-10-10    | 4.0     | 218             | 45 | 37 | 44 | 15 | 21 | 31 | 2.0         |
| Z101036   | BKL-13-10    | 6.8     | 282             | 55 | 49 | 48 | 19 | 30 | 40 | 4.0         |
| Z101044   | BKL-16-10    | 10.3    | 341             | 62 | 65 | 61 | 25 | 37 | 50 | 7.2         |
| Z101093   | BKL-18/20-10 | 16.0    | 368             | 68 | 70 | 72 | 31 | 44 | 62 | 11.4        |

Fulfills requirements in: EN 1677:2008 (WLL +25%), ASTM A952/A952M.  
4:1 Design Factor

## Swivel Safety Hook BKLK

Safety hook with ball-bearing for 360° rotation under full WLL.

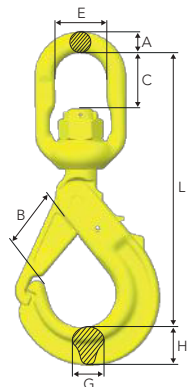


| Stock No. | Code          | WLL (t) | Dimensions (mm) |     |     |     |    |    |    | Weight (kg) |
|-----------|---------------|---------|-----------------|-----|-----|-----|----|----|----|-------------|
|           |               |         | L               | B   | C   | E   | A  | G  | H  |             |
| Z101116   | BKLK-6-10     | 1.5     | 149             | 29  | 24  | 33  | 11 | 15 | 21 | 0.7         |
| Z101106   | BKLK-7/8-10   | 2.6     | 183             | 37  | 27  | 38  | 12 | 17 | 26 | 1.2         |
| Z101030   | BKLK-10-10    | 4.0     | 218             | 45  | 35  | 44  | 15 | 21 | 31 | 2.0         |
| Z101038   | BKLK-13-10    | 6.8     | 280             | 55  | 45  | 48  | 19 | 30 | 40 | 4.0         |
| Z101046   | BKLK-16-10    | 10.3    | 339             | 62  | 62  | 61  | 25 | 37 | 50 | 7.3         |
| Z101095   | BKLK-18/20-10 | 16.0    | 368             | 68  | 60  | 72  | 31 | 44 | 62 | 11.5        |
| Z101294   | BKLK-22-10    | 20.0    | 436             | 79  | 80  | 80  | 35 | 50 | 62 | 16.8        |
| Z101295   | BKLK-26-10    | 27.3    | 486             | 100 | 110 | 102 | 45 | 54 | 68 | 26.0        |

Fulfills requirements in: EN 1677:2008 (WLL +25%), ASTM A952/A952M.  
For larger sizes, see Classic Grade 8.  
4:1 Design Factor

## Swivel Safety Hook with Griplatch LBK

Safety hook with griplatch and swivel for improved positioning of the hook before the load is lifted (360° rotation).

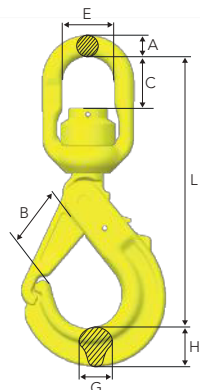


| Stock No. | Code       | WLL (t) | Dimensions (mm) |    |    |    |    |    |    | Weight (kg) |
|-----------|------------|---------|-----------------|----|----|----|----|----|----|-------------|
|           |            |         | L               | B  | C  | E  | A  | G  | H  |             |
| Z100978   | LBK-7/8-10 | 2.6     | 177             | 37 | 27 | 38 | 12 | 20 | 22 | 1.1         |
| Z100960   | LBK-10-10  | 4.0     | 214             | 47 | 37 | 44 | 15 | 22 | 29 | 1.8         |
| Z100993   | LBK-13-10  | 6.8     | 262             | 53 | 45 | 48 | 19 | 29 | 38 | 3.5         |
| Z100995   | LBK-16-10  | 10.3    | 324             | 68 | 66 | 61 | 25 | 30 | 45 | 5.9         |

Fulfills requirements in: EN 1677:2008 (WLL +25%), ASTM A952/A952M.  
4:1 Design Factor

## Swivel Safety Hook with Griplatch LKBK

Safety hook with griplatch and ball-bearing for 360° rotation under full WLL.

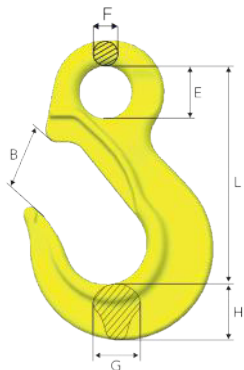


| Stock No. | Code        | WLL (t) | Dimensions (mm) |    |    |    |    |    |    | Weight (kg) |
|-----------|-------------|---------|-----------------|----|----|----|----|----|----|-------------|
|           |             |         | L               | B  | C  | E  | A  | G  | H  |             |
| Z100980   | LKBK-7/8-10 | 2.6     | 176             | 37 | 27 | 38 | 12 | 20 | 22 | 1.1         |
| Z100962   | LKBK-10-10  | 4.0     | 213             | 47 | 35 | 44 | 15 | 22 | 29 | 1.9         |
| Z100997   | LKBK-13-10  | 6.8     | 261             | 53 | 43 | 48 | 19 | 29 | 38 | 3.6         |
| Z100999   | LKBK-16-10  | 10.3    | 323             | 68 | 61 | 61 | 25 | 30 | 45 | 6.2         |

Fulfills requirements in: EN 1677:2008 (WLL +25%), ASTM A952/A952M.  
4:1 Design Factor

## Sling Hook EK

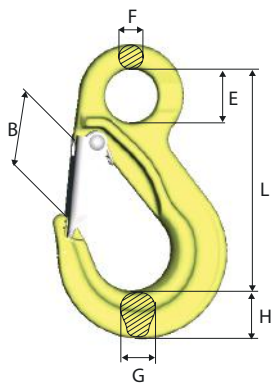
Sling hook with eye connector.



| Stock No. | Code       | WLL (t) | Dimensions (mm) |     |    |    |    |    | Weight (kg) |
|-----------|------------|---------|-----------------|-----|----|----|----|----|-------------|
|           |            |         | L               | B   | E  | F  | G  | H  |             |
| Z101162   | EK- 6-10   | 1.5     | 93              | 29  | 23 | 10 | 17 | 20 | 0.4         |
| Z101164   | EK- 7/8-10 | 2.6     | 108             | 32  | 28 | 12 | 17 | 23 | 0.5         |
| Z101166   | EK-10-10   | 4.0     | 134             | 41  | 34 | 14 | 23 | 30 | 0.9         |
| Z101168   | EK-13-10   | 6.8     | 166             | 49  | 44 | 18 | 28 | 38 | 2.0         |
| Z101170   | EK-16-10   | 10.3    | 203             | 61  | 56 | 22 | 36 | 47 | 3.3         |
| Z101306   | EK-20-10   | 16.0    | 229             | 71  | 61 | 26 | 42 | 60 | 6.2         |
| Z101307   | EK-22-10   | 20.0    | 267             | 82  | 64 | 31 | 43 | 67 | 8.5         |
| Z101308   | EK-26-10   | 27.3    | 301             | 95  | 66 | 32 | 51 | 75 | 12.1        |
| Z101309   | EK-32-10   | 40.0    | 353             | 105 | 90 | 38 | 61 | 98 | 24.6        |

4:1 Design Factor. Fulfills requirements in: EN 1677:2008 (WLL +25%), ASTM A952/A952M-02.

## Sling Hook EKN (with latch)



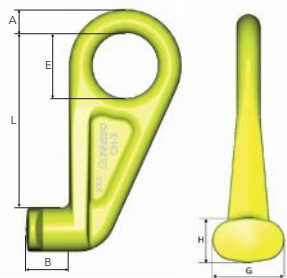
| Stock No. | Code        | WLL (t) | Dimensions (mm) |    |    |    |    |    | Weight (kg) |
|-----------|-------------|---------|-----------------|----|----|----|----|----|-------------|
|           |             |         | L               | B  | E  | F  | G  | H  |             |
| Z101128   | EKN- 6-10   | 1.5     | 93              | 25 | 23 | 10 | 17 | 20 | 0.4         |
| Z101130   | EKN- 7/8-10 | 2.6     | 108             | 26 | 28 | 12 | 17 | 23 | 0.6         |
| Z101132   | EKN-10-10   | 4.0     | 134             | 37 | 34 | 14 | 23 | 30 | 1.0         |
| Z101134   | EKN-13-10   | 6.8     | 166             | 42 | 44 | 18 | 28 | 38 | 2.1         |
| Z101136   | EKN-16-10   | 10.3    | 203             | 53 | 56 | 22 | 36 | 47 | 4.0         |
| Z101327   | EKN-20-10   | 16.0    | 229             | 60 | 61 | 26 | 42 | 60 | 6.4         |
| Z101328   | EKN-22-10   | 20.0    | 267             | 73 | 64 | 31 | 43 | 67 | 8.9         |
| Z101329   | EKN-26-10   | 27.3    | 301             | 82 | 66 | 32 | 51 | 75 | 13.0        |
| Z101330   | EKN-32-10   | 40.0    | 353             | 96 | 90 | 38 | 61 | 98 | 25.0        |

Fulfills requirements in: EN 1677:2008 (WLL +25%), ASTM A952/A952M.

4:1 Design Factor

## Container Hook CH

Made for lifting containers in their lower fittings.

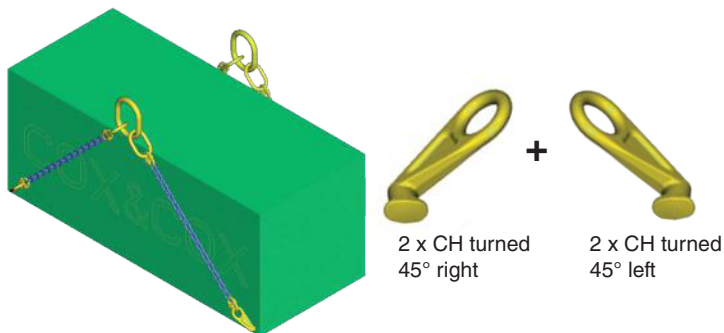
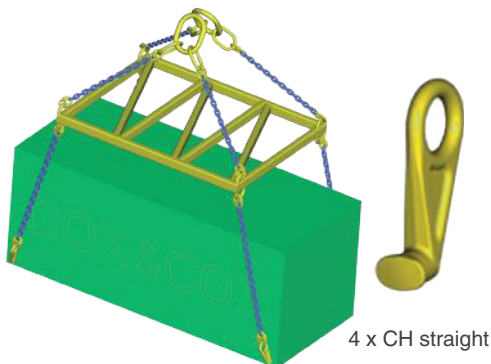


| Stock No. | Code            | WLL (t) | Dimensions (mm) |     |    |    |    |    | Weight (kg) |
|-----------|-----------------|---------|-----------------|-----|----|----|----|----|-------------|
|           |                 |         | A               | L   | E  | B  | H  | G  |             |
| Z101220   | CH-3            | 12.5    | 25              | 187 | 70 | 46 | 47 | 75 | 3.8         |
| Z101221   | CH-3, 45° left  | 12.5    | 25              | 187 | 70 | 46 | 47 | 75 | 3.8         |
| Z101219   | CH-3, 45° right | 12.5    | 25              | 187 | 70 | 46 | 47 | 75 | 3.8         |

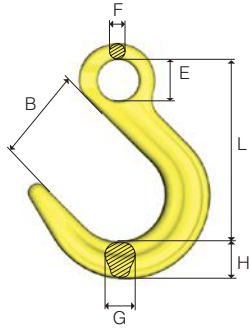
4:1 Design Factor

Alt. 1 - Straight lift

Alt. 2 - Angular lift



## Foundry Hook OKE



| Stock No. | Code       | WLL (t) | Dimensions (mm) |     |    |    |    |    | Weight (kg) |
|-----------|------------|---------|-----------------|-----|----|----|----|----|-------------|
|           |            |         | L               | B   | E  | F  | G  | H  |             |
| Z100853   | OKE-7/8-10 | 2.6     | 124             | 63  | 28 | 12 | 21 | 26 | 0.8         |
| Z100854   | OKE-10-10  | 4.0     | 151             | 76  | 34 | 15 | 26 | 30 | 1.4         |
| Z100855   | OKE-13-10  | 6.8     | 184             | 90  | 44 | 19 | 33 | 39 | 2.8         |
| Z100898   | OKE-16-10  | 10.3    | 218             | 102 | 56 | 23 | 40 | 46 | 4.9         |
| Z101340   | OKE-20-10  | 16.0    | 247             | 114 | 60 | 27 | 46 | 60 | 7.2         |
| Z101341   | OKE-22-10  | 20.0    | 275             | 120 | 64 | 31 | 60 | 70 | 11.3        |
| Z101342   | OKE-26-10  | 27.3    | 300             | 113 | 70 | 35 | 64 | 77 | 16.0        |

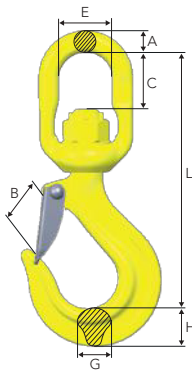
Fulfills requirements in: EN 1677:2008 (WLL +25%), ASTM A952/A952M.

For larger sizes, see Classic Grade 8.

4:1 Design Factor

## Swivel Latch Hook LKN

Sling hook with swivel for improved positioning of the hook before the load is lifted (360° rotation).



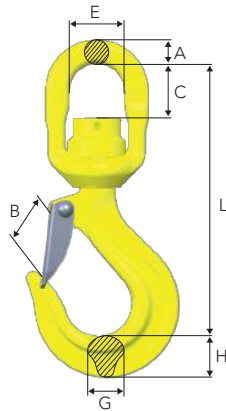
| Stock No. | Code       | WLL (t) | Dimensions (mm) |    |    |    |    |    |    | Weight (kg) |
|-----------|------------|---------|-----------------|----|----|----|----|----|----|-------------|
|           |            |         | L               | B  | C  | E  | A  | G  | H  |             |
| Z101345   | LKN-7/8-10 | 2.6     | 155             | 28 | 28 | 38 | 12 | 18 | 24 | 0.8         |
| Z101346   | LKN-10-10  | 4.0     | 192             | 35 | 37 | 44 | 15 | 23 | 31 | 1.5         |
| Z101347   | LKN-13-10  | 6.8     | 238             | 40 | 47 | 48 | 19 | 28 | 38 | 3.1         |
| Z101348   | LKN-16-10  | 10.3    | 295             | 53 | 65 | 61 | 25 | 34 | 43 | 5.3         |

Fulfills requirements in: EN 1677:2008 (WLL +25%), ASTM A952/A952M.

4:1 Design Factor

## Swivel Latch Hook LKNK

Swivel latch hook with ball bearing for 360° rotation under full WLL.



| Stock No. | Code        | WLL (t) | Dimensions (mm) |    |    |    |    |    |    | Weight (kg) |
|-----------|-------------|---------|-----------------|----|----|----|----|----|----|-------------|
|           |             |         | L               | B  | C  | E  | A  | G  | H  |             |
| Z101349   | LKNK-7/8-10 | 2.6     | 154             | 28 | 28 | 38 | 12 | 18 | 24 | 0.9         |
| Z101350   | LKNK-10-10  | 4.0     | 191             | 35 | 35 | 44 | 15 | 23 | 31 | 1.6         |
| Z101351   | LKNK-13-10  | 6.8     | 236             | 40 | 45 | 48 | 19 | 28 | 38 | 3.3         |
| Z101352   | LKNK-16-10  | 10.3    | 293             | 53 | 62 | 61 | 25 | 34 | 43 | 5.6         |
| Z101354   | LKNK-22-10  | 20.0    | 400             | 74 | 80 | 80 | 35 | 43 | 67 | 15.1        |

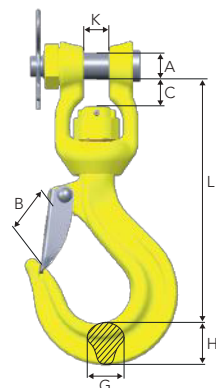
Fulfills requirements in: EN 1677:2008 (WLL +25%), ASTM A952/A952M.

4:1 Design Factor

## Clevis Swivel Hook LKNG

For direct connection to small cranes or similar applications that require positioning of hook.

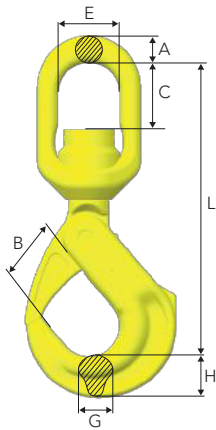
Swivel for improved positioning (360°).



| Stock No. | Code       | WLL (t) | Dimensions (mm) |    |    |    |    |    |    | Weight (kg) |
|-----------|------------|---------|-----------------|----|----|----|----|----|----|-------------|
|           |            |         | L               | B  | C  | A  | G  | H  | K  |             |
| Z101353   | LKNG-16-10 | 10.3    | 258             | 53 | 30 | 28 | 34 | 43 | 27 | 5.7         |

Fulfills requirements in: EN 1677:2008 (WLL +25%), ASTM A952/A952M.

4:1 Design Factor



## Swivel Safety Hook BKLK Offshore HDG

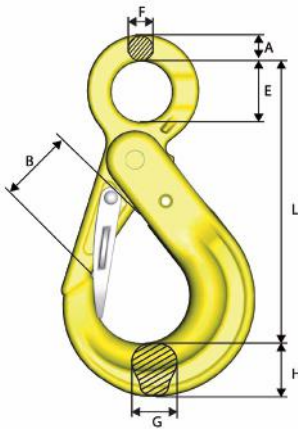
| Stock No.         | Code                   | WLL (t) 4:1 | WLL (t) 5:1 | Dimensions (mm) |     |     |     |    |    |    | Weight (kg) |
|-------------------|------------------------|-------------|-------------|-----------------|-----|-----|-----|----|----|----|-------------|
|                   |                        |             |             | L               | B   | C   | E   | A  | G  | H  |             |
| ZG101370          | BKLK-13-8 OS W HDG     | 6.7         | 5.4         | 307             | 55  | 72  | 61  | 25 | 30 | 40 | 4.9         |
| ZG101371          | BKLK-16-8 OS W HDG     | 10.3        | 8.2         | 365             | 62  | 88  | 82  | 26 | 37 | 50 | 8.4         |
| ZG1013561         | BKLK-18/20-8 OS W HDG  | 16.0        | 12.8        | 395             | 68  | 88  | 80  | 35 | 46 | 64 | 13.9        |
| ZG101294          | BKLK-22-8 OS HDG       | 20.0        | 16.0        | 436             | 79  | 80  | 80  | 35 | 50 | 62 | 16.8        |
| ZG101295          | BKLK-26-8 OS HDG       | 27.3        | 21.6        | 486             | 100 | 110 | 102 | 45 | 54 | 68 | 26.5        |
| ZG101344          | BKLK-32-8 OS HDG       | 32.8        | 26.2        | 533             | 120 | 110 | 102 | 45 | 62 | 86 | 32.3        |
| With double latch |                        |             |             |                 |     |     |     |    |    |    |             |
| ZGS1167           | BKLKD-13-8 OS W HDG    | 6.7         | 5.4         | 307             | 43  | 72  | 61  | 25 | 30 | 40 | 5.0         |
| ZGS1168           | BKLKD-16-8 OS W HDG    | 10.3        | 8.2         | 365             | 48  | 88  | 82  | 26 | 37 | 50 | 8.8         |
| ZGS1169           | BKLKD-18/20-8 OS W HDG | 16.0        | 12.8        | 395             | 52  | 88  | 80  | 35 | 46 | 64 | 14.3        |

Manufactured according to requirements in: DNV 2.7-1:2013, DNVGL-ST-0377:2016, DNVGL-ST-0388:2016 and NORSOK R-002:2017.

## Safety Hook BK & BKLK Offshore with Double Latch

With recessed trigger

Due to the motion of the sea when loading and unloading offshore, direct impact on the hook could cause the latch to unintentionally open when not being under load, risking the load to unhitch. The double latch safety hook has an extra latch retaining the load in this case.



| Stock No. | Code         | WLL (t) | Dimensions (mm) |     |    |    |    |    |    | Weight (kg) |
|-----------|--------------|---------|-----------------|-----|----|----|----|----|----|-------------|
|           |              |         | A               | L   | B  | E  | F  | G  | H  |             |
| Z101154   | BKD-13-10    | 6.8     | 20              | 207 | 44 | 44 | 16 | 30 | 40 | 3.2         |
| Z101155   | BKD-16-10    | 10.3    | 26              | 254 | 48 | 56 | 20 | 37 | 50 | 5.8         |
| Z101156   | BKD-18/20-10 | 16.0    | 30              | 289 | 52 | 60 | 22 | 46 | 62 | 9.1         |
| Z101373   | BKD-26-10    | 27.3    | 35              | 342 | 72 | 80 | 25 | 54 | 68 | 16.8        |

4:1 Design Factor

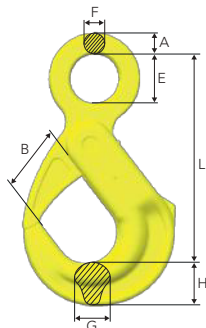
Double Latch

Should the hook latch accidentally open, either through direct impact or excessive wear on the trigger, the extra latch is there to retain the load safely. The extra latch is designed to be easily operated.



Recessed Trigger

To avoid the trigger from being hit or damaged it has been recessed into the hook. This prevents the latch further from accidentally opening.



## Safety Hook BK Offshore

| Stock No. | Code           | WLL (t) 4:1 | WLL (t) 5:1 | Dimensions (mm) |     |    |    |    |    | Weight (kg) |
|-----------|----------------|-------------|-------------|-----------------|-----|----|----|----|----|-------------|
|           |                |             |             | L               | B   | E  | F  | G  | H  |             |
| ZG101355  | BK-26-8 OS HDG | 27.3        | 21.6        | 342             | 100 | 80 | 25 | 54 | 68 | 16.5        |
| ZG101364  | BK-32-8 OS HDG | 32.8        | 26.2        | 400             | 120 | 90 | 30 | 62 | 86 | 23.3        |

Offshore material, impact toughness > 20 ft-lb (42 J) at -4°F.

Manufactured according to requirements in: DNV 2.7-1:2013, DNVGL-ST-0377:2016, DNVGL-ST-0388:2016 and NORSOK R-002:2017

## Increased safety in heavy lifting operations

The WRIN STR Handle provides additional safety to the Gunnebo Industries BK Safety Hook family.

### Improved workplace safety

- With the WRIN STR Handle, the operator opens and closes the safety hook without placing their hands inside the hook, resulting in a reduced risk of personal injury on job sites. The handle is easily mounted to the safety hook, without compromising the integrity of design and capabilities of the hook.

### Suitable to any safety hook within the BK family

- The WRIN STR Handle is easily mounted to any safety hook within the BK family.
- For sling shops the WRIN STR Handle is the perfect complement to the BK safety hooks, reducing the need for stocking a large assortment of different safety hooks.
- If the handle is fully operable, it can be mounted and reused on a new hook if the existing hook is worn out.

### Unique design

- The handle will keep the integrity of the hook's design and capabilities uncompromised.
- The handle is clamped to the hook and fixed by the hook's trigger pin.
- Hole for attaching a lead line for easy retrieval.
- Made of stainless steel according to AISI 316.



4

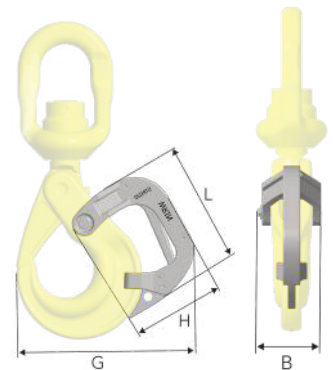


## WRIN STR Handle

Suitable to any safety hook within the Gunnebo Industries BK family.

| Stock No. | Code   | Hook size (mm) | Dimensions (mm) |     |     |     | Suits the following safety hooks: | Weight (kg) |
|-----------|--------|----------------|-----------------|-----|-----|-----|-----------------------------------|-------------|
|           |        |                | L               | H   | B   | G   |                                   |             |
| Z101413   | STRG13 | 13             | 145             | 103 | 60  | 184 | BK, BKD, BKG, BKL, BKLK, BKCLKD   | 0.75        |
| Z101414   | STRG16 | 16             | 182             | 140 | 80  | 255 | BK, BKD, BKG, BKL, BKLK, BKCLKD   | 1.90        |
| Z101415   | STRG20 | 18/20          | 194             | 155 | 90  | 280 | BK, BKD, BKG, BKL, BKLK, BKCLKD   | 2.50        |
| Z101416   | STRG22 | 22             | 203             | 164 | 90  | 300 | BK, BKLK                          | 2.60        |
| Z101417   | STRG26 | 26             | 215             | 192 | 103 | 348 | BK, BKLK                          | 3.45        |
| Z101418   | STRG32 | 32             | 263             | 179 | 103 | 380 | BK, BKLK                          | 3.90        |

Material: Stainless steel according to AISI 316.



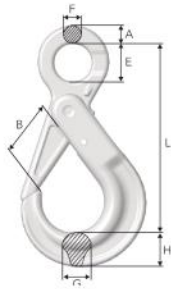
### Dual surface treatment

- HDG + powder coat
- Easier to see in low visibility conditions
- Extended service life for unparalleled corrosion protection

Hot-dip galvanized (HDG) hooks for offshore harsh environments. Watch video at [thecrosbygroup.com/HDGhooks](http://thecrosbygroup.com/HDGhooks)

Understanding the importance of high ductility in lifting equipment. Watch video at [thecrosbygroup.com/ductility](http://thecrosbygroup.com/ductility)

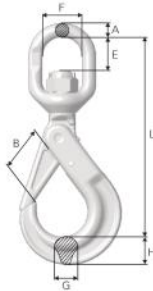




### Safety Hook BK HDG

| Stock No. | Code         | WLL (t) | Dimensions (mm) |     |    |    |    |    |    | Weight (kg) |
|-----------|--------------|---------|-----------------|-----|----|----|----|----|----|-------------|
|           |              |         | A               | L   | B  | E  | F  | G  | H  |             |
| ZG101108  | BK-6-8 HDG   | 1.12    | 12              | 109 | 29 | 22 | 10 | 15 | 21 | 0.5         |
| ZG101097  | BK-7/8-8 HDG | 2.0     | 14              | 138 | 37 | 28 | 11 | 17 | 26 | 0.9         |
| ZG101024  | BK-10-8 HDG  | 3.2     | 16              | 168 | 45 | 34 | 13 | 21 | 31 | 1.5         |
| ZG101032  | BK-13-8 HDG  | 5.4     | 20              | 207 | 55 | 44 | 16 | 30 | 40 | 3.0         |

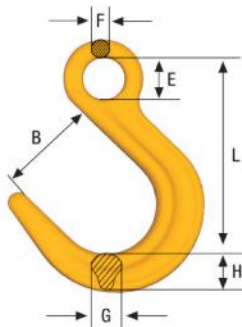
4:1 Design Factor



### Swivel Safety Hook BKL HDG

| Stock No. | Code         | WLL (t) | Dimensions (mm) |    |    |    |    |    |    | Weight (kg) |
|-----------|--------------|---------|-----------------|----|----|----|----|----|----|-------------|
|           |              |         | L               | B  | C  | E  | A  | G  | H  |             |
| ZG101028  | BKL-10-8 HDG | 3.2     | 218             | 45 | 37 | 44 | 15 | 21 | 31 | 2.0         |
| ZG101036  | BKL-13-8 HDG | 5.4     | 282             | 55 | 49 | 48 | 19 | 30 | 40 | 4.0         |
| ZG101044  | BKL-16-8 HDG | 8.2     | 344             | 62 | 68 | 61 | 25 | 37 | 50 | 7.3         |

4:1 Design Factor



### Foundry Hook OKE

| Stock No. | Code     | WLL (t) | Dimensions (mm) |     |    |    |    |    | Weight (kg) |
|-----------|----------|---------|-----------------|-----|----|----|----|----|-------------|
|           |          |         | L               | B   | E  | F  | G  | H  |             |
| Z645564   | OKE-32-8 | 32.8    | 384             | 145 | 90 | 42 | 77 | 94 | 30          |

Fulfills requirements in: EN 1677:2008, ISO 8539:2009, ASTM A952/A952M and AS 3776:2015.

4:1 Design Factor



Surface Treatment Production | Växjö, Sweden



Collaborative Robot | Växjö, Sweden

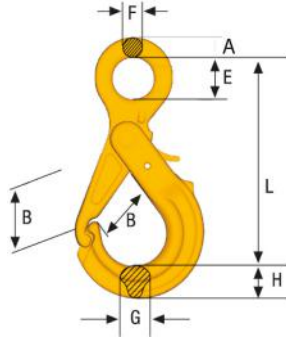


Testing & Inspection | Växjö, Sweden

## BEHIND THE SCENES

Get a behind-the-scenes look at the innovative processes to manufacture the world's leading rigging, lifting, and load securement hardware.

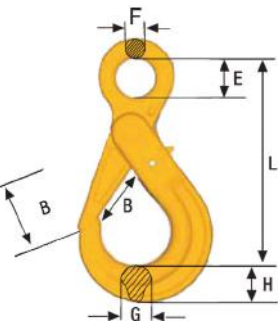
Watch all videos at [thecrosbygroup.com/facilities](https://thecrosbygroup.com/facilities)



## Safety Hook with Griplatch OBK

| Stock No. | Code     | WLL (t) | Dimensions (mm) |     |    |    |    |    |    | Weight (kg) |
|-----------|----------|---------|-----------------|-----|----|----|----|----|----|-------------|
|           |          |         | A               | L   | B  | E  | F  | G  | H  |             |
| Z100218   | OBK-22-8 | 15.5    | 30              | 335 | 87 | 70 | 24 | 40 | 58 | 10.2        |

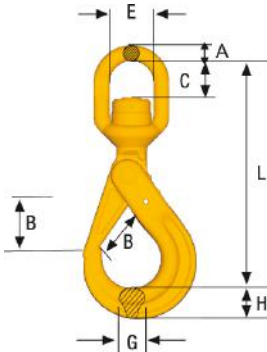
Fulfills requirements in: EN 1677:2008, ISO 8539:2009, ASTM A952/A952M and AS 3776:2015.  
4:1 Design Factor



## Safety Hook BK

| Stock No. | Code    | WLL (t) | Dimensions (mm) |     |    |    |    |    | Weight (kg) |
|-----------|---------|---------|-----------------|-----|----|----|----|----|-------------|
|           |         |         | L               | B   | E  | F  | G  | H  |             |
| Z101357   | BK-32-8 | 32.8    | 400             | 120 | 90 | 30 | 62 | 86 | 23.8        |

Fulfills requirements in: EN 1677:2008, ISO 8539:2009, ASTM A952/A952M and AS 3776:2015.  
4:1 Design Factor

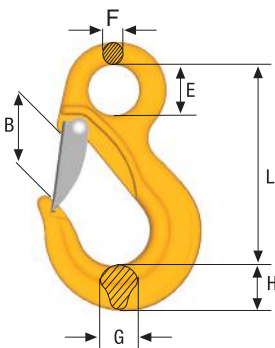


## Swivel Safety Hook BCLK

Safety hook with ball-bearing for 360° rotation under full load.

| Stock No. | Code      | WLL (t) | Dimensions (mm) |     |     |     |    |    |    | Weight (kg) |
|-----------|-----------|---------|-----------------|-----|-----|-----|----|----|----|-------------|
|           |           |         | L               | B   | C   | E   | A  | G  | H  |             |
| Z101344   | BCLK-32-8 | 32.8    | 533             | 120 | 110 | 102 | 45 | 62 | 86 | 32.3        |

Fulfills requirements in: EN 1677:2008, ISO 8539:2009, ASTM A952/A952M and AS 3776:2015.  
4:1 Design Factor



## Sling Hook EK (without latch) and EKN (with latch)

| Stock No. | Code     | WLL (t) | Dimensions (mm) |     |    |    |    |    | Weight (kg) |
|-----------|----------|---------|-----------------|-----|----|----|----|----|-------------|
|           |          |         | L               | B   | E  | F  | G  | H  |             |
| Z100720   | EK-32-8  | 32.8    | 333             | 105 | 76 | 38 | 61 | 80 | 17.7        |
| Z100725   | EKN-32-8 | 32.8    | 333             | 93  | 76 | 38 | 61 | 80 | 17.9        |

Fulfills requirements in: EN 1677:2008, ISO 8539:2009, ASTM A952/A952M and AS 3776:2015.  
4:1 Design Factor

# Universal weld-on hook, UKN

## The original excavator hook

Excavators are often used for material handling and lifting because they are available on most construction sites. However, rigging gear is often incorrectly attached, either to the teeth of the bucket or directly on the excavator arm, which is a dangerous practice that can lead to accidents.

The Gunnebo Industries UKN Hook was developed in 1975 – a solution that transformed the excavator into a lifting crane. The UKN Hook has been fitted to excavators and other applications for almost 50 years, either as an aftermarket product or directly by the manufacturer.

Today the UKN is the hook of choice for leading international excavator manufacturers.

### Quality

- Forged alloy steel.
- Hardened and tempered.

### 100% proof-loaded

- Every hook is individually proof-loaded at 3 x WLL.

### High durability

- Forged.
- Rated with a 5:1 safety factor.

### Clear markings

- Country of origin.
- Traceability code.
- Model and size.

### Prepared for welding

- Base plate prepared for welding.

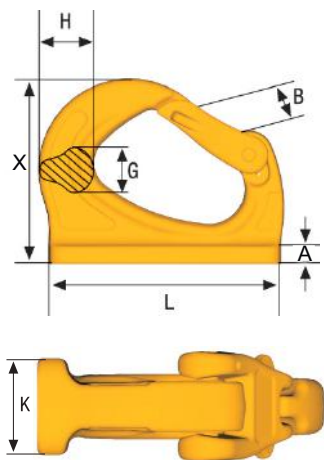


### Heavy duty latch

- Latch with handles for easy opening.
- Hardened and tempered.

### Pin & spring

- Spring protection.
- Hardened and tempered hinge pin.
- Stainless steel spring.



## Universal Weld-On Hook - UKN

| Stock No. | Code      | WLL metric tonnes** | Dimensions (mm) |    |    |    |      |    |     | Weight (kg) |
|-----------|-----------|---------------------|-----------------|----|----|----|------|----|-----|-------------|
|           |           |                     | B               | G  | H  | K  | L    | A  | X   |             |
| Z1002560  | UKN-0.75* | 0.75                | 20              | 13 | 20 | 19 | 81.5 | 5  | 56  | 0.2         |
| Z6511810  | UKN-1*    | 1.0                 | 27              | 17 | 25 | 25 | 95   | 6  | 72  | 0.6         |
| Z7009060  | UKN-2*    | 2.0                 | 33              | 20 | 30 | 30 | 114  | 8  | 86  | 0.9         |
| Z6455730  | UKN-3     | 3.0                 | 30              | 23 | 32 | 35 | 132  | 10 | 105 | 1.3         |
| Z6521160  | UKN-4     | 4.0                 | 30              | 29 | 38 | 42 | 140  | 11 | 114 | 2.0         |
| Z6455800  | UKN-5     | 5.0                 | 34              | 30 | 47 | 45 | 165  | 12 | 131 | 3.2         |
| Z6515390  | UKN-8     | 8.0                 | 34              | 40 | 51 | 50 | 172  | 13 | 133 | 3.6         |
| Z6456030  | UKN-10    | 10.0                | 47              | 43 | 58 | 55 | 220  | 14 | 170 | 8.2         |
| Z1007850  | UKN-15    | 15.0                | 55              | 50 | 67 | 60 | 240  | 15 | 188 | 9.8         |
| Z1007851  | UKN-20    | 20.0                | 65              | 60 | 85 | 60 | 275  | 15 | 207 | 12.4        |

\* Welding plate slightly curved  
 \*\* Design factor 5:1

Fulfills requirements in: EN 474-1.